

New Zealand Fisheries
Assessment Report
2009/29
June 2009
ISSN 1175-1584

Biomass survey and stock assessment of cockles
(*Austrovenus stutchburyi*) on Snake Bank,
Whangarei Harbour, 2009

J. R. Williams
M. D. Smith
G. Mackay

**Biomass survey and stock assessment of cockles
(*Austrovenus stutchburyi*) on Snake Bank,
Whangarei Harbour, 2009**

J. R. Williams¹
M. D. Smith¹
G. Mackay²

¹NIWA
Private Bag 99940
Auckland 1149

²NIWA
Bream Bay Aquaculture Park
P O Box 147
Ruakaka 0151

**Published by Ministry of Fisheries
Wellington
2009**

ISSN 1175-1584

©
**Ministry of Fisheries
2009**

Williams, J.R.; Smith, M.D.; Mackay, G. (2009).
Biomass survey and stock assessment of cockles (*Austrovenus stutchburyi*) on Snake Bank, Whangarei
Harbour, 2009.
New Zealand Fisheries Assessment Report 2009/29. 22 p.

This series continues the informal
New Zealand Fisheries Assessment Research Document series
which ceased at the end of 1999.

EXECUTIVE SUMMARY

Williams, J.R.; Smith, M.D.; Mackay, G. (2009). Biomass survey and stock assessment of cockles (*Austrovenus stutchburyi*) on Snake Bank, Whangarei Harbour, 2009.

New Zealand Fisheries Assessment Report 2009/29. 22 p.

A stratified random survey of cockles (*Austrovenus stutchburyi*) on Snake Bank, Whangarei Harbour (COC 1A), on 11 February 2009 produced an estimate of current recruited biomass (30 mm or greater shell length, SL) of 815 t with a c.v. of 13.4%. This estimate was considerably lower than those in 2007 and 2008, but similar to that in 2006. Current recruited biomass was about 35% of its virgin level (which is assumed to be 2340 t in 1982), and was about 8% lower than the average recruited biomass ($B_{av(1991-2009)} = 890$ t). The 2009 length frequency distribution suggested that recent recruitment of juveniles (under 20 mm SL) had been slightly higher compared with recent years (2007 and 2008), and this could lead to moderately improved levels of adult recruitment to the fishable biomass in the near future.

Incorporating information from this latest survey led to a current annual yield (CAY) estimate of 239 t for 2009, which is lower than the TACC (346 t). Biomass and yield estimates are sensitive to the assumed size at recruitment to the fishery. At an assumed size at recruitment of 28 mm SL (which may be realistic given the size of cockles in the commercial catch), current biomass was estimated to be 1409 t, about 52% of virgin biomass (2426 t in 1982, cockles 28 mm SL or larger), and CAY was estimated to be 349 t (for 2009), which is marginally higher than the TACC. Estimates of Maximum Constant Yield (MCY) were always lower than the TACC. Recent reported landings (151 t in 2007–08) were less than both the TACC and the estimates of MCY and CAY (for cockles 30 mm or greater SL). Overall, the 2009 biomass survey results and our simple CAY estimates suggest that fishing at the level of recent average landings is likely to be sustainable in the short term. However, because the estimated CAY is lower than the TACC, and given the large fluctuations in cockle biomass at Snake Bank observed over the last three decades, fishing at the level of the TACC is not likely to be sustainable in the long term.

1. INTRODUCTION

1.1 Overview

This report summarises research and fishery information for cockles, *Austrovenus stutchburyi*, on Snake Bank and elsewhere in Whangarei Harbour (Figure 1). The most recent biomass survey on Snake Bank (February 2009) is presented, an ongoing tagging study to estimate cockle growth is described, and yield estimates for 2009 are derived using methods after the Ministry of Fisheries Science Group (2006). The overall objective was to carry out a stock assessment of cockles on Snake Bank, including estimating absolute biomass and sustainable yields. Specific objectives were to:

- 1) estimate the size structure and absolute biomass of cockles on Snake Bank during March–April 2009. The target coefficient of variation (c.v.) of the estimate of absolute recruited biomass was 20%.
- 2) complete the cockle stock assessment and estimate yields for cockles on Snake Bank for the 2009–10 fishing year
- 3) estimate the age and growth of cockles.



Figure 1: Beaches and banks within Whangarei Harbour that support appreciable numbers of cockles (as at July 2002, from Cryer et al. (2003)). Sampling strata are delineated by solid lines.

1.2 Description of the fishery

Commercial picking in Whangarei Harbour (COC 1A) began in the early 1980s and is undertaken year round, with no particular seasonality. Commercial fishers are restricted to hand gathering, but they routinely use simple implements such as “hand sorters” to separate cockles of desirable size from smaller animals and silt. There is some recreational and customary interest in cockles, and all fishers favour larger cockles over smaller ones. There is no minimum legal size for cockles; however, the mean length of the commercial harvest is about 29.5 mm and cockles smaller than 25 mm are less attractive to both commercial and non-commercial fishers.

1.3 Literature review

General reviews of the fishery and cockle biology were given by Cryer (1997) and the Ministry of Fisheries Science Group (2006). Biomass estimates have been generated for Snake Bank by Cryer (1997), Morrison & Cryer (1999), Morrison (2000), Morrison & Parkinson (2001), Cryer & Parkinson (2001), Cryer et al. (2003, 2004), Watson et al. (2005), and Williams et al. (2006a, 2006b, 2008a, 2008b). Estimates for cockles in other parts of the harbour were made by Morrison & Parkinson (2001) (MacDonald Bank) and Cryer et al. (2003) (MacDonald Bank and all other areas shown in Figure 1). A length-based model, based on that for paua, *Haliotis iris* (Breen et al. 2000), was developed for cockles by P. Breen (NIWA 2000, unpublished results), and refined by McKenzie et al. (2003) and Watson et al. (2005), although the fit to the observed data was poor at all iterations.

2. REVIEW OF THE FISHERY

2.1 TACCs, catch, landings, and effort data

Commercial catch statistics for Snake Bank (Table 1) are unreliable (probably underestimates) before 1986, but, as a guide, it is thought that over 150 t (greenweight) of Snake Bank cockles were exported in 1982. However, there is evidence that cockles have been gathered commercially elsewhere in Whangarei Harbour and, thus, landings from Snake Bank may be over- or under-reported.

Table 1: Reported commercial landings and catch limits (t greenweight) of cockles from Snake Bank since 1986–87 (from Quota Management Report records, after the Ministry of Fisheries Science Group (2006)). A TACC of 346 t was established in October 2002 when COC 1A entered the QMS. Before this, the fishery was restricted by daily catch limits which summed to 584 t in a 365 day year, but there was no explicit annual restriction. * The figure of 566 t for 1993–94 may be unreliable.

Year	Landings (t)	Limit (t)	Year	Landings (t)	Limit (t)	Year	Landings (t)	Limit (t)
1986–87	114	584	1994–95	501	584	2002–03	237	346
1987–88	128	584	1995–96	495	584	2003–04	218	346
1988–89	255	584	1996–97	457	584	2004–05	151	346
1989–90	426	584	1997–98	439	584	2005–06	137	346
1990–91	396	584	1998–99	472	584	2006–07	111	346
1991–92	537	584	1999–00	505	584	2007–08	151	346
1992–93	316	584	2000–01	423	584			
1993–94	*566	584	2001–02	405	584			

Until 30 September 2002, there were eight permit holders, each allowed a maximum of 200 kg per day. If all permit holders took their limit every day a maximum of 584 t could be taken in one year. Reported landings of less than 130 t before 1988–89 rose to 537 t in 1991–92 (about 92% of the theoretical maximum). Landings for the 1992–93 fishing year were much reduced (about 316 t) after an extended closure for biotoxin contamination, but landings the following year (1993–94) were the highest on record (566 t). This figure may be unreliable; it is difficult to believe such high landings could have been achieved without some breaking of the 200 kg daily limit. Landings averaged 462 t between 1994–95 and 2001–02 until, on 1 October 2002, this fishery was introduced to the Quota Management System (QMS) with a Total Allowable Commercial Catch (TACC) of 346 t. Landings declined steadily since then (average of 168 t between 2002–03 and 2007–08), reaching the lowest recorded level of 111 t in 2006–07, although landings in 2007–08 had increased to 151 t. Effort and catch-per-unit-effort data are not presented for this fishery because there are major problems with the reported information that render them uninformative.

2.2 Other information

Snake Bank is not the only cockle bed in Whangarei Harbour, but it is the only bed open for commercial fishing. The others are on the mainland, notably Marsden Bay, and on other sandbanks, notably MacDonald Bank (Cryer et al. 2003). There is anecdotal evidence that illegal commercial gathering has occurred on MacDonald Bank on a reasonable scale in the past, which could have resulted in some over-reporting of catch from Snake Bank in some years.

2.3 Recreational and Maori customary fisheries

In common with many other intertidal shellfish, cockles are important to Maori as a traditional food. However, no quantitative information on the level of customary take is available. Cockles are also taken by recreational fishers, and cockles of about 30 mm or larger SL are acceptable (see Hartill & Cryer (2000) for estimates of recreational selectivity at four Auckland beaches). A regional telephone and diary survey in 1993–94 (Teirney et al. 1997), and national recreational diary surveys in 1996 (Bradford 1998), 1999–2000 (Boyd & Reilly 2002), and 2000–01 (Boyd et al. 2004) estimated the numbers of cockles harvested in QMA 1 to be 0.57–2.4 million (Table 2). It is not clear to what extent these estimates include customary take. No mean harvest weight for cockles was available, but an assumed mean weight of 25 g (as for cockles 30 mm SL or more from the 1992 Snake Bank survey) leads to a QMA 1 recreational harvest of 14–59 t (Table 2). In 2004, the Marine Recreational Fisheries Technical Working Group reviewed the harvest estimates of these surveys and concluded that the 1993–94 and 1996 estimates were unreliable due to a methodological error. While the same error did not apply to the 1999–2000 and 2000–01 surveys, it was considered the estimates may still be very inaccurate. No recreational harvest estimates specific to the Snake Bank fishery are available.

Table 2: Estimated numbers of cockles harvested by recreational fishers in QMA 1, and the corresponding harvest tonnage based on an assumed mean weight of 25 g. Figures were extracted from a telephone and diary survey in 1993–94, and from national recreational diary surveys in 1996, 1999–2000, and 2000–01.

Year	QMA 1 harvest (no. of cockles)	c.v. (%)	QMA 1 harvest (t)	Source
1993–94	2 140 000	18	55	Teirney et al. (1997)
1996	569 000	18	14	Bradford (1998)
1999–2000	2 357 000	24	59	Boyd & Reilly (2002)
2000–01	2 327 000	27	58	Boyd et al. (2004)

2.4 Other sources of fishing mortality

There have been sporadic suggestions of illegal fishing or over-catching of daily limits, but none have been supported by quantitative information. Some methods of harvesting (such as brooms, rakes, and “hand sorters”) could cause some mortality, particularly of small cockles, but this remains untested.

3. RESEARCH

3.1 Stock structure

Little is known of the stock structure of New Zealand cockles. It is assumed for management that cockles on Snake Bank are separate from cockles in other parts of Whangarei Harbour and elsewhere in QMA 1. However, the extended planktonic phase in cockles (a few weeks) suggests that the Snake Bank population is not likely to be reproductively isolated from the rest of the harbour. This may provide some protection against recruitment overfishing if there are productive spawning populations nearby. Nevertheless, it has been demonstrated for this bank that settlement of juvenile cockles can be

reduced by the removal of a large proportion of the adults (Martin 1984). Conversely, length frequency distributions from periodic biomass surveys suggest little recruitment to the Snake Bank population when adult biomass was close to virgin in 1983–85 (see Figure 6). This suggests that there may be some optimal level of adult biomass for spat settlement and eventual recruitment. It would appear prudent, therefore, to be cautious in reducing the biomass of adult cockles. If adult biomass is driven too low, then recruitment overfishing of this population could occur (via a “bottleneck” at spat settlement) despite the availability of large numbers of larvae.

3.2 Resource surveys

3.2.1 Historical information for Snake Bank

Biomass surveys have been conducted periodically on Snake Bank since 1982 (Table 3). Between 1982 and 1996, seven biomass surveys were conducted using orthogonal grid sampling (Cryer 1997). These early surveys were based on a permanent grid with 50 m intersection spacings and had typically 150–200 stations. In 1998, a stratified random sampling approach was adopted which used historical data from previous grid-based surveys to divide Snake Bank into appropriate density strata (Morrison & Cryer 1999). Annual surveys since 1998 have had 50–75 stations in various single phase stratified random designs constrained to keep stations at least 50 m apart. Stratification was revised in 2001, 2003, 2004, and 2005 because the northern part of the high density area (and, probably, the whole bank) appeared to have moved slowly east between about 1999 and 2003 (see Figure 5).

Table 3: Estimates of biomass (t) of cockles on Snake Bank for surveys (*n*, number of stations) since 1982. Biomass estimates marked with an asterisk (*) were made using length frequency distributions and length-weight regressions, others by direct weighing of samples sorted into three size classes. Two estimates are presented for 1988 because the survey was abandoned part-way through, “a” assuming the distribution of biomass in 1988 was the same as in 1991, and “b” assuming the distribution in 1988 was the same as in 1985. The 2001 result comes from the second of two surveys, the first having produced unacceptably imprecise results. The 2007 and 2008 results differ slightly from those reported previously because they were estimated using an analytical approach more consistent with that used in other years.

Year	<i>n</i>	Total		< 30 mm SL		≥ 30 mm SL		≥ 35 mm SL	
		Biomass	c.v.	Biomass	c.v.	Biomass	c.v.	Biomass	c.v.
1982	199	2 556	—	*216	—	*2 340	—	1 825	~ 0.10
1983	187	2 509	—	*321	—	*2 188	—	1 700	~ 0.10
1985	136	2 009	0.08	*347	~0.10	1 662	0.08	1 174	~ 0.10
1988 a	53	—	—	—	—	1 140	> 0.15	—	—
1988 b	53	—	—	—	—	744	> 0.15	—	—
1991	158	1 447	0.09	686	0.10	761	0.10	197	0.12
1992	191	1 642	0.08	862	0.10	780	0.08	172	0.11
1995	181	2 480	0.07	1 002	0.09	1 478	0.07	317	0.12
1996	193	1 755	0.07	959	0.09	796	0.08	157	0.11
1998	53	2 401	0.18	1 520	0.20	880	0.17	114	0.20
1999	47	3 486	0.12	2 165	0.12	1 321	0.14	194	0.32
2000	50	1 906	0.23	1 336	0.24	570	0.25	89	0.32
2001	51	1 405	0.17	970	0.18	435	0.17	40	0.29
2002	53	1 618	0.14	1 152	0.15	466	0.19	44	0.29
2003	60	2 597	0.11	1 567	0.15	1 030	0.12	121	0.14
2004	65	1 910	0.15	1 364	0.17	546	0.14	59	0.22
2005	57	2 592	0.18	1 625	0.18	967	0.20	111	0.20
2006	57	2 412	0.13	1 620	0.15	792	0.13	103	0.20
2007	73	2 883	0.13	1 449	0.18	1 434	0.15	329	0.42
2008	70	2 510	0.10	1 345	0.14	1 165	0.11	193	0.43
2009	75	1 686	0.15	871	0.19	815	0.13	88	0.19

3.2.2 2009 Snake Bank survey methods

The 2009 survey of Snake Bank cockles was conducted using stratified random sampling (Figure 2). As in recent surveys, Snake Bank was divided into two survey strata: 1) the high-density stratum, the main intertidal part of the bank exposed at a reasonably low tide (0.6 m chart datum); and 2) the “mid” stratum, the area exposed between 0.3 and 0.6 m c.d. These High and Mid strata were similar to those used in the 2006–08 biomass surveys of Snake Bank (see Williams et al. 2006b, 2008a, 2008b). The location of the High stratum boundary was estimated on 9 February 2009 by walking the perimeter of the bank at low tide (0.6 m chart datum) and periodically recording positions using a high-precision (but non-differential) hand-held Global Positioning System (GPS). The outer boundary of the Mid stratum was mapped in 2007. The “Low” stratum used in the 2007 survey (Williams et al. 2008a), the peripheral area of shallow water that is rarely exposed (0.0 to 0.3 m c.d.), was not sampled in 2008 or 2009 because surveys in recent years demonstrated an absence of cockles in this lower tidal portion of the bank (see Williams et al. 2008a).

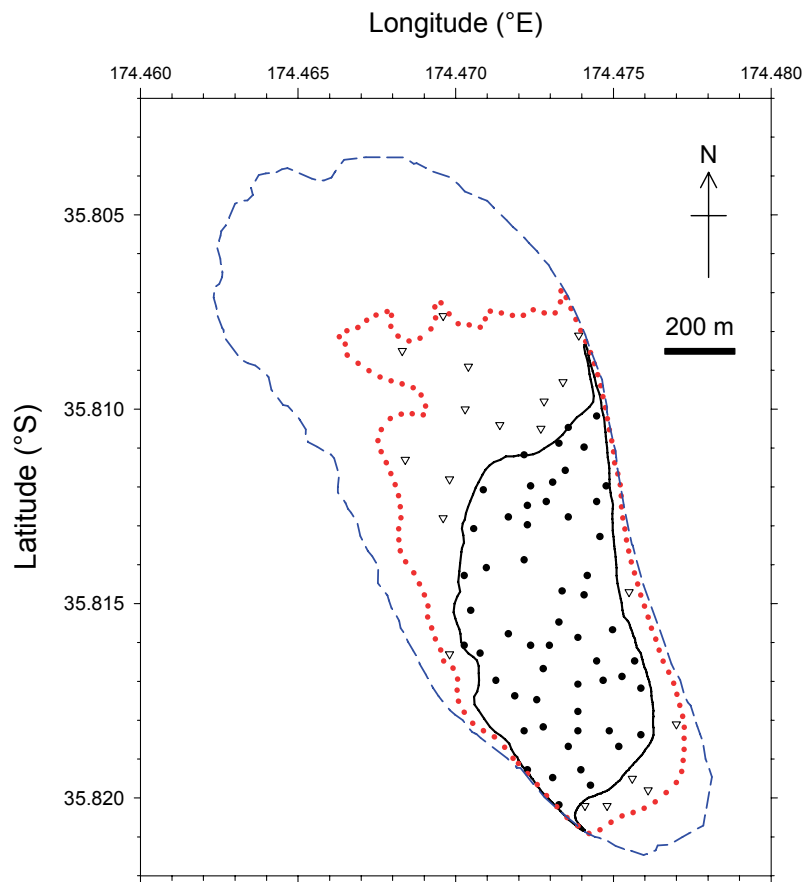


Figure 2: Design of the February 2009 cockle survey on Snake Bank, Whangarei Harbour. Filled circles indicate station positions ($n = 56$) in the High stratum (solid inner line) and open triangles denote stations ($n = 19$) in the Mid stratum (dotted line). The Low stratum (dashed line) was not sampled in 2009 because surveys in recent years have demonstrated an absence of cockles in this lower tidal portion of the bank. Latitude and longitude are in decimal degrees.

On 11 February 2009, 75 randomly located stations (56 in the high density stratum and 19 in the mid tidal stratum; Figure 2) were visited in turn, using GPS. At each station, a square quadrat of 0.5×0.5 m (0.25 m²) was thrown haphazardly onto the bank. All sediment beneath the quadrat was excavated to the anaerobic layer (generally to a depth of about 100 mm, but sometimes considerably deeper) by hand, including in the samples any animals directly under the south- and west-facing sides (to account for any “edge effect”). Cockles were extracted from the sediment using a metal sieve of 5 mm square aperture agitated in water. At each station, up to about 200 cockles were measured (SL) to the next whole millimetre down, and the aggregate weight of cockles in each of three size classes (under 30 mm, 30–34 mm, 35 mm and over SL) was determined by direct weighing. At stations where obviously more than 200 cockles were present, a random subsample of about 200 cockles was taken, shell lengths were measured, and the aggregate weights of cockles in each of the three size classes determined by weighing. The remaining (unmeasured) cockles in the sample were counted, and their aggregate weight was determined by weighing. Standing biomass per unit area was estimated by scaling recorded weights by the inverse of the sampled fraction (total number of cockles divided by the number of cockles measured) at each station, then to a square metre of sediment.

The overall biomass of cockles (for a given size range) was estimated using the weighted average of the two stratum estimates of mean biomass, weights being proportional to the relative area of each stratum:

$$\bar{x} = \sum_{i=1} W_i \bar{x}_i$$

where \bar{x} is the estimated biomass (t), W_i is the area (m²), and \bar{x}_i is the mean biomass (t) in stratum i .

The variance for this mean was estimated using:

$$s^2 = \sum_{i=1} W_i^2 s_i^2 / n_i$$

where s^2 is the variance of the estimated biomass, s_i^2 is the sampling variance of the station biomass estimates in stratum i , and n_i is the number of stations within stratum i (Snedecor & Cochran 1989). No finite correction term was applied because the sampling fraction was negligible (less than 0.1% of the total area).

Station length frequency distributions were estimated by scaling the recorded length frequency distributions by the inverse of the sampled fraction (total number of cockles divided by the number of cockles measured) at each station, then to a square metre of sediment. Stratum length frequency distributions were estimated as the average station length frequency distribution for that stratum scaled by the stratum area (m²). The population length frequency distribution was estimated by adding the stratum length frequency distributions.

3.2.3 2009 Snake Bank survey results

The February 2009 survey produced an estimated recruited biomass (30 mm or more SL) of 815 t with a c.v. of 13.4% (Table 3). This was considerably lower than those for 2007 and 2008 (which represented the highest levels since 1999), but similar to that in 2006 (Figure 3). Restricting the estimate of recruited biomass to the largest cockles (35 mm or more SL) produced an estimate of 88 t with a c.v. of 18.8%, which was similar to that in 2006. The biomass of cockles under 30 mm SL was estimated to be 871 t with a c.v. of 18.7%, which is the lowest since 1992, and about 32% lower than the average since 1991 (1281 t, c.v. = 15.2%). Absolute biomass in 2009 was estimated to be 1686 t with a c.v. of 14.7%, which is the lowest since 2002.

Cockles 30 mm or more SL were distributed throughout the central area of the high density stratum in 2009, but we found only nine cockles in the Mid stratum (Figure 4). Some of these were from a station located in the northwest corner of the Mid stratum, on small sandbanks that were at a higher tidal elevation than the surrounding area. The boundary of the high density stratum mapped by GPS in 2009 suggested the location of the bank was reasonably stable and had not continued the apparent move eastward observed between 1999 and 2003 (Figure 5) (Cryer et al. 2003, Watson et al. 2005). Movement of the bank caused poor survey precision and equivocal results in the first of two surveys in 2001 (in April) and requires careful monitoring if survey accuracy is not to be jeopardised.

The estimated population length frequency distribution in 2009 was bimodal, with a small mode at 10 mm and a large mode at 28 mm SL (Figure 6), and, therefore, continued the recent pattern of domination by cockles just under 30 mm SL. The slight increase in the number of juvenile cockles (20 mm SL or less) compared with 2007 and 2008 (Figure 6) could suggest relatively moderate recruitment to the fishable biomass for the near future.

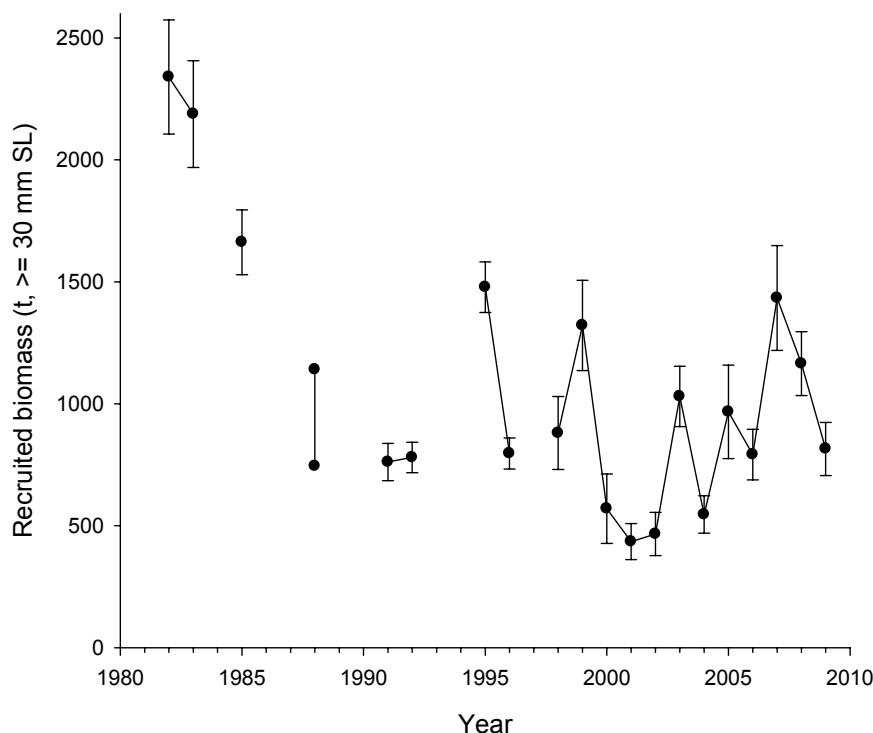


Figure 3: Estimated recruited biomass of cockles (30 mm or more SL, \pm one standard error) on Snake Bank from surveys between 1982 and 2009. The 1988 grid survey was abandoned part-way through and its analysis is complicated; two alternative analytical approaches are plotted as dots. The 2001 result comes from the second (in June) of two surveys, the first (in April) having produced unacceptably imprecise results. The 2007 and 2008 results differ slightly from those reported previously because they were estimated using an analytical approach more consistent with that used in other years.

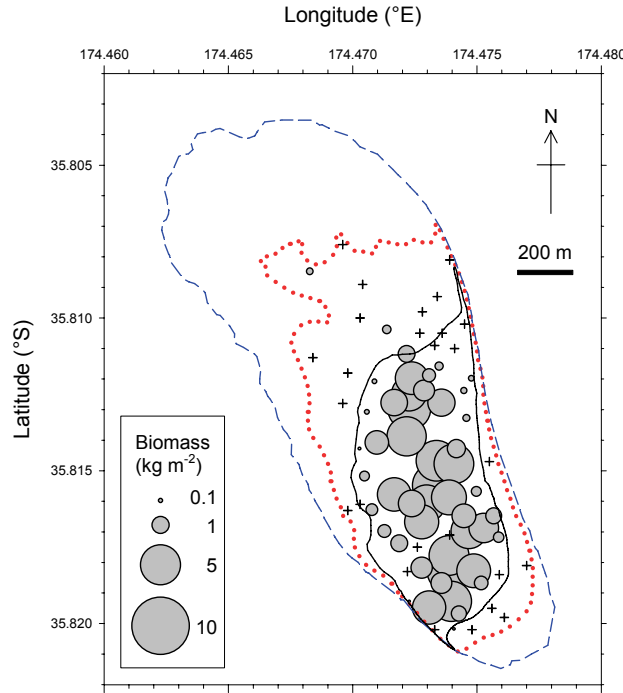


Figure 4: Distribution of recruited biomass of cockles on Snake Bank, Whangarei Harbour, 2009. Filled circles indicate stations sampled in the high density (solid line) or mid tidal (dotted line) strata where cockles 30 mm or more SL were present; circle area is proportional to the estimated biomass (kg m^{-2}) of cockles at each station. Crosses denote those stations sampled with zero cockles. The low tidal stratum (dashed line) was not surveyed in 2009 because recent surveys demonstrated cockles were absent from this lower tidal area of the bank. Latitude and longitude are in decimal degrees.

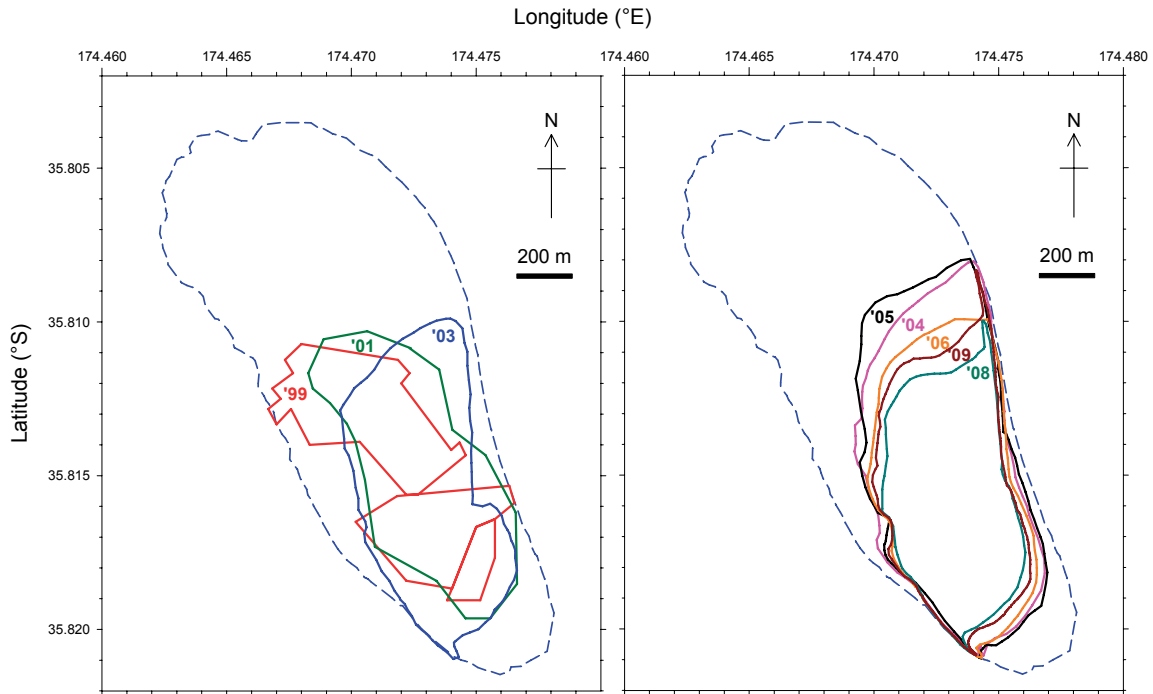


Figure 5: Location of the high density sampling strata on Snake Bank between 1999 and 2009, showing the apparent movement to the east, at least for the northern part of the stratum, observed between 1999 and 2003 (left plot). The position of the bank since then appears to have been fairly stable (right plot). The 1999 stratification was a modified version of the 1998 stratification which, in turn, was based on the average distribution of cockles, 1985–96. Dashed line indicates the low tidal stratum boundary (0.0 m c.d.), estimated using GPS in 2007. Latitude and longitude are in decimal degrees.

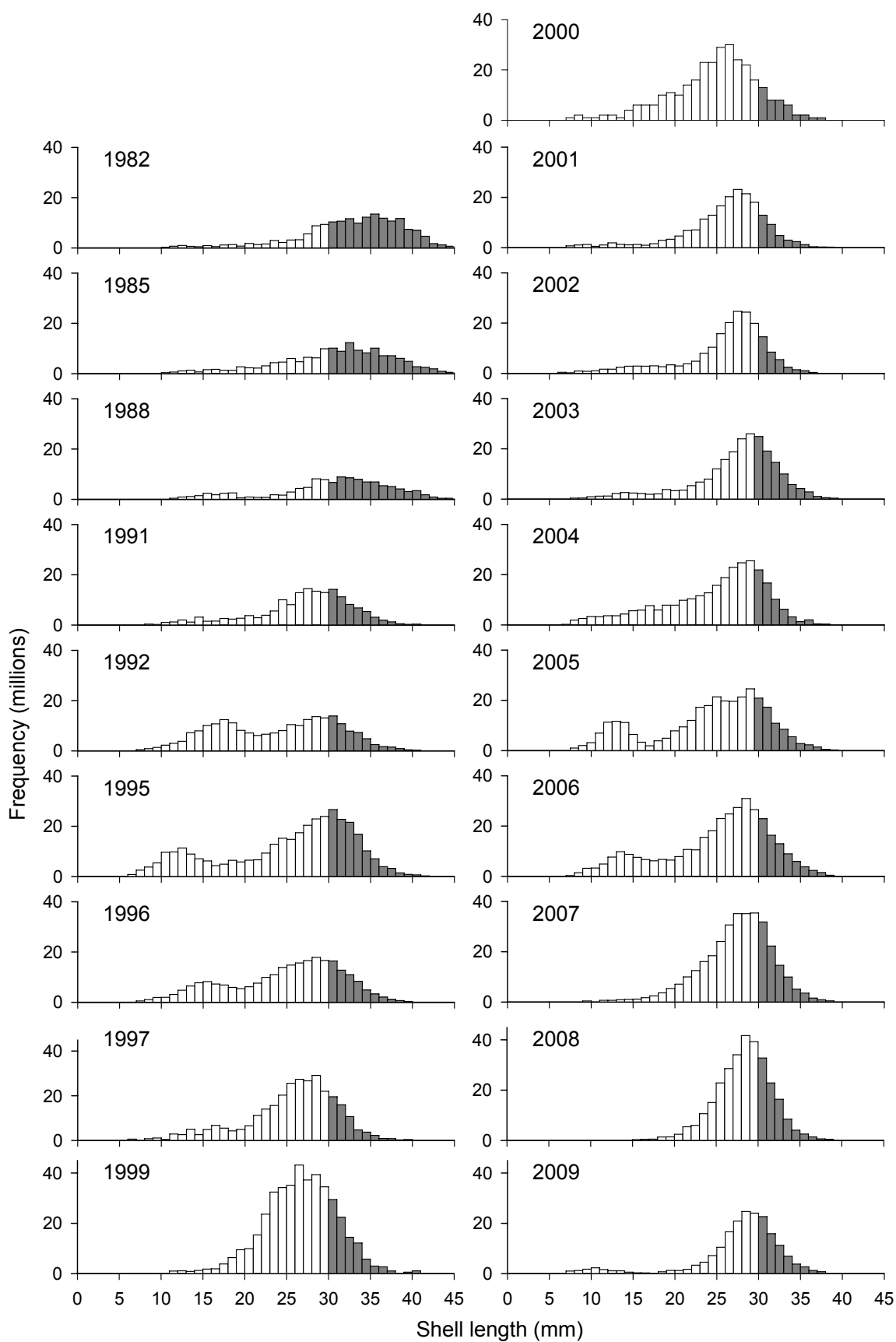


Figure 6: Estimated population length frequency distribution of cockles on Snake Bank, 1982–2009. Shaded bars represent cockles of 30 mm SL or more, the assumed size at recruitment to the fishery.

3.2.4 Sensitivity of biomass estimates to the assumed size at recruitment

Actual (aggregate) weights were measured for size classes under 30, 30–34, and 35 mm and over SL, and these allowed the direct estimation of recruited biomass only for assumed sizes at recruitment of 30 and 35 mm SL. Catch sampling of commercial cockle landings was undertaken in 1992, 1996, and 2001–03. In the most recent years of catch sampling (2001–03), fishers took a greater proportion of cockles smaller than 30 mm SL, occasionally taking cockles as small as 25 mm SL (Figure 7).

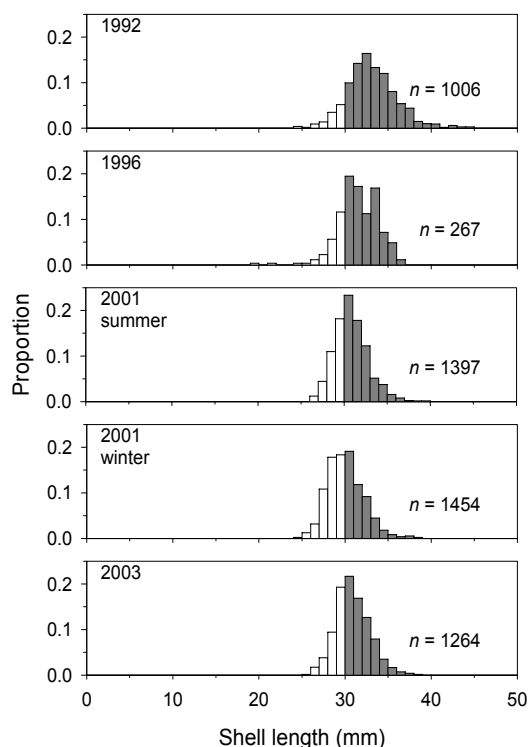


Figure 7: Estimated length frequency distribution of cockles in the commercial harvest from Snake Bank in 1992 (Cryer 1997), 1996 (Cryer 1997), 2001 (Cryer & Parkinson 2001), and 2003 (Cryer et al. 2004). Shaded bars represent cockles 30 mm SL or longer (the nominal size at recruitment to the fishery).

Recruited biomass in 2009, therefore, was predicted for a range of additional assumed sizes at recruitment (20, 25, and 28 mm SL) using the estimated 2009 population length frequency distribution and a length-weight regression (from Cryer 1997). These estimates were scaled to account for the minor discrepancy between 2009 estimates derived by direct weighing and length frequency analysis. At assumed sizes of recruitment to the fishery of 20, 25, and 28 mm SL, the estimated recruited biomass was 1676, 1596, and 1265 t, respectively (Table 4). We have not formally estimated c.v.s for these estimates, but all would probably be similar to that (13.4%) on the estimate at 30 mm SL.

Table 4: Estimated recruited biomass (B) of cockles on Snake Bank for different assumed shell lengths at recruitment to the fishery (L_{recr}).

L_{recr} (mm)	Rationale	$B_{\text{curr}(2009)}$		B_{2008}		$B_{\text{av}} (1991-2009)$		Ratio	
		(t)	c.v.	(t)	c.v.	(t)	c.v.	$B_{\text{curr}}:B_{2008}$	$B_{\text{curr}}:B_{\text{av}}$
1	Absolute biomass	1 686	0.15	2 510	0.10	2 171	0.07	0.67	0.78
20	Reproductive maturity	1 676	—	2 501	—	2 114	0.07	0.67	0.79
25	Smallest in catch	1 596	—	2 332	—	1 877	0.07	0.68	0.85
28	Fisher selectivity	1 265	—	1 770	—	1 409	0.07	0.71	0.90
30	Historical assumption	815	0.13	1 165	0.14	890	0.09	0.70	0.92
35	Largest cockles	88	0.19	193	0.43	145	0.15	0.46	0.60

3.2.5 Biomass in other parts of Whangarei Harbour (2002)

Cryer et al. (2003) described surveys of cockle beds in parts of Whangarei Harbour other than Snake Bank. Their survey was conducted in July–August 2002 and is best compared with the survey of Snake Bank in late March 2002 (Cryer et al. 2003). At that time, appreciable numbers of cockles of a size of interest to fishers were found only on Snake Bank, MacDonald Bank, and in Marsden Bay. Some other areas held mostly small cockles. The distribution of recruited biomass among strata, the total biomass, and the estimated precision of these estimates were all sensitive to changes in the assumed size at recruitment. If only cockles of 35 mm SL or larger were included, more than half of the recruited biomass was in Marsden Bay in 2002. As the assumed size at recruitment was decreased, the biomass was spread among progressively more strata. At an assumed size at recruitment of 30 mm SL (as for Snake Bank), the total recruited biomass in areas other than Snake Bank was estimated to be 881 t (c.v. = 33%), spread roughly 60:40 between MacDonald Bank and Marsden Bay. At an assumed size at recruitment of 20 mm SL (similar to the size at biological maturity) (Larcombe 1971), the total recruited biomass in areas other than Snake Bank was estimated to be 3243 t (c.v. = 15%); about three-quarters was on MacDonald Bank. The March 2002 survey of 53 stations on Snake Bank produced an estimated recruited biomass (30 mm or more SL) of 466 t with a c.v. of 18.9% (Cryer et al. 2003). Restricting the estimate of recruited biomass to cockles over 35 mm SL produced a biomass estimate of 44 t with a c.v. of 29%, longer than 20 mm SL a biomass estimate of 1574 t with a c.v. of 14%, and total biomass was estimated to be 1618 t with a c.v. of 14%. Thus, in 2002, Snake Bank contained 25% of the biomass of very large cockles (35 mm SL or larger), 35% of the historically accepted recruited biomass (30 mm SL or larger), 33% of the biologically mature cockles (20 mm SL or larger), and 31% of the total (sampled) cockle biomass in Whangarei Harbour.

3.3 Other studies

3.3.1 Length-weight relationships

The relationship between length and weight is important for cockles because length-weight regressions are used to assess the sensitivity of biomass estimates to the assumed size at recruitment to the fishery. Several regressions have been derived (Table 5) and there has been considerable variation among them. It is not known whether this variation is random, or a result of variation among locations, years, or tidal height.

Table 5: Length-weight regressions ($W = aL^b$) for cockles on Snake Bank (weight in g, length in mm). Locations relate to the area on Snake Bank from which the cockles were collected.

Year	Location	a	b	n	r^2	Reference
1992	Random	0.001100	2.721	607		Cryer & Holdsworth (1993)
1995	Random	0.000150	3.285	226		Annala & Sullivan (1996)
1996	Mid-tide	0.000180	3.253	240		Cryer (1997)
1996	Lagoon	0.000370	3.060	204		Cryer (1997)
1998	Mid-tide	0.000180	3.275	103		Morrison & Cryer (1999)
1999	Lagoon	0.000090	3.450	114		Morrison (2000)
1999	Mid-tide	0.000100	3.445	122		Morrison (2000)
2001	Random	0.000170	3.246	193		Cryer et al. (2003)
2005	Random	0.000118	3.385	208	0.98	Williams et al. (2006a)
2006	Random	0.000092	3.440	200	0.98	Williams et al. (2006b)
2007	Random	0.000083	3.455	315	0.95	Williams et al. (2008a)
2008	Random	0.000114	3.360	291	0.93	Williams et al. (2008b)
2009	Random	0.000140	3.290	399	0.97	This report

3.3.2 Mortality and yield-per-recruit

Experimental work on Snake Bank in 1983 by N. Martin (unpublished data) led to estimates of absolute natural mortality of 17–30% per annum, or instantaneous mortality (M) of 0.19–0.35, with a midpoint of $M = 0.28$ (Cryer 1997). The estimated mortality rates for cockles over 30 mm SL were slightly greater at 19–37% per annum (M of 0.21–0.46 with a midpoint of 0.33). This higher estimate was caused by relatively high mortality rates for cockles over 35 mm SL and, as these are uncommon, $M = 0.30$ (range 0.20–0.40) is usually assumed for yield-per-recruit modelling and yield calculations (Cryer 1997).

3.3.3 Previous growth estimates

Analysis of roughly quarterly length frequency distributions between 1991 and 1996 on Snake Bank using MULTIFAN software (Fournier et al. 1990, Otter Research 1992) generated von Bertalanffy (von Bertalanffy 1938) growth parameter estimates of $L_\infty = 31.0$ mm, $K = 1.02 \text{ y}^{-1}$, and $t_0 = 0.00$ y (Cryer 1997). These estimates are similar to those generated by a previous MULTIFAN analysis using data from 1992 and 1993 only (Cryer & Holdsworth 1993). Both MULTIFAN analyses suggested rapid growth (about 2 y) to the size of interest to fishers (about 30 mm). This was much faster growth than estimated in tagging studies by Martin (1984) in the nearby Whangateau Harbour, where cockles could take up to 4 or 5 years to attain 30 mm SL. The MULTIFAN analyses could, however, have been adversely affected by highly size-dependent fishing mortality, causing this approach to underestimate L_∞ and, consequently, overestimate K .

In 2001 and 2003, tag-recapture experiments were set up on Snake Bank to investigate cockle growth rate (Table 6). In each experiment, up to 2000 cockles of a wide range of sizes were “notch tagged” (marked with distinct, shallow grooves from the shell margin up onto the valve surface) and replanted within the main fishery area. Notch tagging provides a permanent reference for length at release and is faster and more efficient than conventional tagging (Cranfield et al. 1993). Marked cockles were recovered after 1–2 y at liberty (Table 6) and measured to determine incremental growth, the difference between length at release (i.e., length to notch) and recapture (total SL).

Table 6: Cockle notch-tagging experiments on Snake Bank, 2001–05. n , number of cockles recovered.

Experiment	Tagging date	Recapture date	Time at liberty (days)	n
2001–02	7 June 2001	9 September 2002	459	191
2003–04	17 April 2003	18 May 2004	397	178
2003–05	17 April 2003	8 April 2005	722	96

Cryer et al. (2004) analysed the results of the 2001–02 experiment using Gulland’s method (see Ricker 1975) and generated estimates of the von Bertalanffy parameters $L_\infty = 35.7$ mm SL and $K = 0.31$, a much shallower growth curve than suggested by the MULTIFAN length frequency analyses, and similar to the earlier estimates of Martin (1984). Watson et al. (2005) examined the 2003–04 data and showed there was little variation in growth from the 2001–02 experiment.

Williams et al. (2006a) recovered a further sample of cockles tagged in 2003, after almost two years at liberty. Incremental growth data from all three tag-recapture experiments (2001–02, 2003–04, and 2003–05) were pooled and analysed by Williams et al. (2006a) using the growth model GROTAG (Francis 1988) (Figure 8). The model fitted to the pooled dataset produced estimates of $L_\infty = 35.0$ mm SL (c.v. = 2.9%) and $K = 0.26$ (c.v. = 5.3%) (Table 7). The addition of seasonal variation parameters did not significantly improve the model fit (likelihood ratio probability $p > \chi^2 = 0.34$). Thus, although these tag-recapture data did not provide evidence of seasonal variation in growth rates, it was possible they were not collected at sufficiently fine temporal scales to detect seasonality.

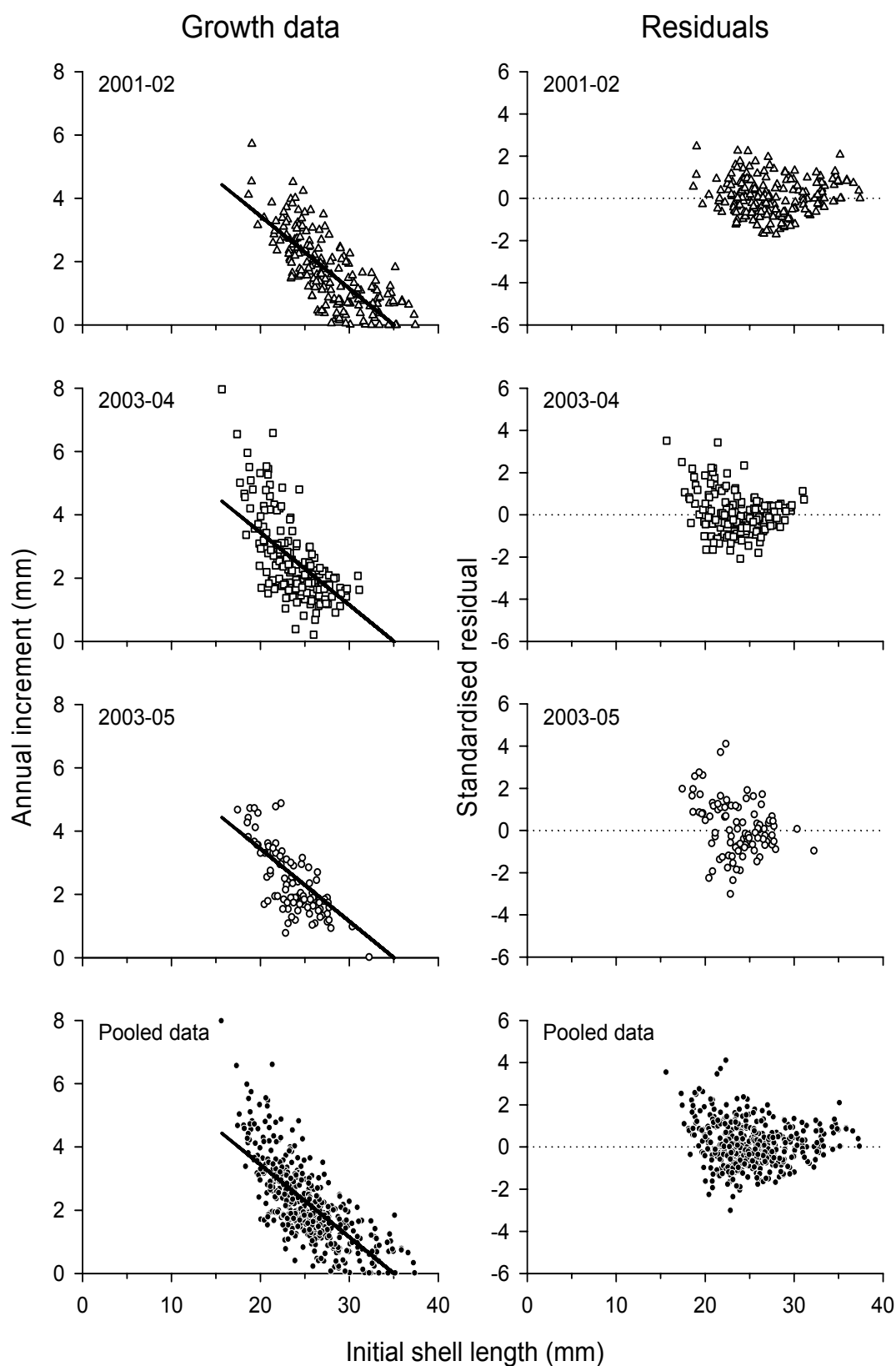


Figure 8: Incremental growth data and standardised residuals from the fitted GROTAG model (Francis 1988) for notch tagged cockles on Snake Bank, Whangarei Harbour, 2001–05. The solid black line represents the model fitted to the data pooled from the 2001–02 ($n = 191$), 2003–04 ($n = 178$) and 2003–05 ($n = 96$) tag-recapture experiments. The observed increments have been scaled to reflect expected annual growth. After Williams et al. (2006a).

Williams et al. (2006a) also assessed interannual variation in growth using the three sets of notch-tag data (2001–02, 2003–04, and 2003–05). The standardised residuals from the GROTAG model fitted to the pooled data were allocated to their respective experiments and compared using the non-parametric Kruskal-Wallis test (Kruskal & Wallis 1952). There were no differences in standardised residuals among experiments ($\chi^2 = 2.78$; d.f. = 2; $p = 0.25$), suggesting there was little interannual variation in growth, although the treatment of these experiments as separate “years” was not ideal given their varied durations (see Table 6). Furthermore, from plots of standardised residuals against initial shell length at release it appeared that most residuals for the smallest and largest cockles were positive (Figure 8). This suggested that the simple linear two-parameter (g_{20} , g_{30}) model may be inadequate, especially for cockles longer than about 30 mm. Williams et al. (2006a) suggested future analyses might benefit from using alternative growth models that allow the predicted growth of larger animals to decline asymptotically to zero and never be negative (e.g., Cranfield et al. 1996, Haddon et al. 2007). Also, it is likely that several years of annual growth data would be needed before definitive conclusions on interannual growth variability could be made.

Table 7: Parameter estimates for the GROTAG model (Francis 1988) fitted to growth increment data for notch tagged cockles on Snake Bank, 2001–05 (using data pooled from the 2001–02, 2003–04, and 2003–05 tag-recapture experiments). The GROTAG model parameters s and m for measurement error could not be estimated from these data, so both s and m were set to zero. Corresponding estimates of the von Bertalanffy growth function parameters L_∞ and K are also shown. After Williams et al. (2006a).

Parameter	Symbol (unit)	Value
Mean growth rates	g_{20} (mm y ⁻¹)	3.44
	g_{30} (mm y ⁻¹)	1.15
Growth variability	v	0.31
Outlier contamination	p	3.02×10^{-8}
von Bertalanffy	L_∞ (mm)	35.03
	K	0.26

3.3.4 Ongoing seasonal tag-recapture study

A long-term tag-recapture study was initiated in 2005 on Snake Bank to investigate seasonal variation in cockle growth rate. Williams et al. (2006a) notch-tagged a large sample of cockles (about 2000 individuals) of a range of sizes and replanted them on Snake Bank on 31 March 2005. Further large samples of cockles were notch-tagged and replanted on Snake Bank on 3 March 2006 (Williams et al. 2006b) and 22 March 2007 (Williams et al. 2008a). For the latter (2007 sample), cockles were tagged using a combination of notch-tagging and individually identifiable plastic tags superglued to the shells. Future recoveries of these animals should provide more data on seasonal variation in cockle growth rates, and allow a comparison between the two tagging methods. In 2008, another large sample of cockles was tagged using the ‘id’ tags only.

Seasonal (roughly quarterly) recoveries of these tagged animals have been made subsequently (Table 8), and we hope to make additional recoveries over the next few years. Preliminary results suggest there may be strong seasonal variability in growth, and this will be investigated further on completion of the study. Early indications are that most growth occurs in spring and summer, and average growth essentially ceases during winter.

Another large sample of cockles was tagged and replanted on 13 February 2009. Cockles were tagged using individually identifiable plastic tags superglued to the shells. Future recoveries of these animals should provide more data on seasonal variation in cockle growth rates, and allow the estimation of cockle mortality.

Table 8: Seasonal tag-recapture study on Snake Bank, 2005–09. *d*, number of days at liberty; *n*, number of cockles recovered.

Year	Recapture date	Tagging date					
		31 March 2005		3 March 2006		22 March 2007	
		<i>d</i>	<i>n</i>	<i>d</i>	<i>n</i>	<i>d</i>	<i>n</i>
2005	8 August 2005	130	286				
	13 October 2005	196	215				
2006	16 January 2006	291	207				
	26 April 2006	391	170				
	22 June 2006	-	-	111	214		
	18 September 2006	536	106	199	198		
2007	6 December 2006	615	82	278	210		
	21 March 2007	720	50	383	180		
	3 July 2007	824	123	487	159	103	165
	25 September 2007	908	72	571	109	187	205
	17 December 2007	991	80	654	135	270	115
2008	10 March 2008	1 075	46	738	105	354	84
	2 July 2008	1 189	77	852	91	468	147
	1 October 2008	1 280	41	943	57	559	84
2009	8 January 2009	1 379	81	1 042	76	658	56
	26 March 2009	1 456	38	1 119	69	735	86

3.4 Biomass estimates

Virgin recruited biomass of cockles on Snake Bank is assumed to be 2340 t, equal to the biomass of cockles of 30 mm or more shell length in the first survey in 1982. Current (2009) recruited biomass (30 mm or more SL) was estimated by quadrat survey to be 815 t with a c.v. of 13.4%, which is about 35% of its virgin level. Average recruited biomass, estimated from the 16 quadrat surveys between 1991 and 2009 (the fishery was assumed to have been “fully developed” by about 1990), was 890 t with a c.v. of 9.1%. All estimates of reference and current biomass are sensitive to the assumed size at recruitment to the fishery.

3.5 Yield estimates

Yield was estimated using results from a quadrat survey and assumed values for size at recruitment. Better estimates of yield may eventually become available from modelling, but results so far have not been encouraging.

3.5.1 Estimation of Maximum Constant Yield

Maximum Constant Yield (MCY) was estimated using method 2 (Ministry of Fisheries Science Group 2006):

$$MCY = 0.5F_{0.1}B_{av} \quad (1)$$

where $F_{0.1}$ is a reference rate of fishing mortality and B_{av} is the average recruited biomass between 1991 and 2009 (890 t). An estimate of $F_{0.1} = 0.41$ was used (Cryer 1997).

$$MCY = 0.5 \times 0.41 \times 890 = 182 \text{ t} \quad (2)$$

This estimate would have a c.v. at least as large as that associated with the estimate of average recruited biomass between 1991 and 2009 (9.1%). The estimate of MCY is sensitive to the assumed

size at recruitment to the fishery (Table 9), and to uncertainty in $F_{0.1}$ (arising from the considerable uncertainty in both growth parameters and M).

3.5.2 Estimation of Current Annual Yield

Current Annual Yield (CAY) was estimated using method 1 and the full version of the Baranov catch equation (Ministry of Fisheries Science Group 2006).

$$CAY = \frac{F_{ref}}{F_{ref} + M} (1 - e^{-(F_{ref} + M)}) B_{beg} \quad (3)$$

where F_{ref} is a reference rate of fishing mortality, M is natural mortality, and B_{beg} is the start of season recruited biomass. The current estimate of recruited biomass (B_{curr}) derived from the February 2009 survey of Snake Bank was substituted for B_{beg} . Estimates of $M = 0.30$ and $F_{0.1} = 0.41$ were used (Cryer 1997).

$$CAY = \frac{0.41}{0.71} \times 0.5084 \times 815 = 239 \text{ t} \quad (4)$$

This estimate would have a c.v. at least as large as that associated with the current estimate of recruited biomass in February 2009 (13.4%). The estimate of CAY is sensitive to the assumed size at recruitment to the fishery (Table 9), and to uncertainty in $F_{0.1}$ (arising from the considerable uncertainty in the growth parameters and M).

Table 9: Sensitivity of Maximum Constant Yield (MCY) and Current Annual Yield (CAY) estimates to the assumed size at recruitment (L_{recr}) to the fishery. MCY was estimated using Method 2 (Ministry of Fisheries Science Group 2006); B_{av} was estimated for each size at recruitment using data from the 16 surveys between 1991 and 2009. CAY was estimated using Method 1 and the full version of the Baranov catch equation (Ministry of Fisheries Science Group 2006); the current estimate of recruited biomass (B_{curr}) was estimated for each size at recruitment and substituted for B_{beg} to calculate CAY. M was assumed, and estimates of $F_{0.1}$ were taken from Cryer (1997).

L_{recr} (mm)	Rationale	B_{av} (1991–2009) (t)	B_{curr} (2009) (t)	M	$F_{0.1}$	MCY (t)	CAY (t)
25	Smallest in catch	1 877	1 596	0.3	0.34	319	401
28	Fisher selectivity	1 409	1 265	0.3	0.38	268	349
30	Historical assumption	890	815	0.3	0.41	182	239
35	Largest cockles	145	88	0.3	1.00	73	49

3.6 Models

3.6.1 Development of a length-based model of cockles on Snake Bank

A length-based model was used by Watson et al. (2005) to assess the Snake Bank cockle population. This model was adapted from a model developed by McKenzie et al. (2003) (see also Cryer et al. (2004)), which itself was based on a model developed by Breen et al. (2000) to assess paua (*Haliotis iris*) in PAU 5B and 5D. The model was a stochastic, dynamic, length-based, observation-error time series model. All model iterations up to and including that developed by Watson et al. (2005) had problems rationalising the observed biomass, the various length frequency distributions, and the growth increment (tagging) data. In general, fits were obtained to one series at the expense of the fit to the other(s). There seemed to be a fundamental conflict in the observed data, and this may point to the existence of an “unseen” or unaccounted mortality factor affecting the cockle population, or high variability of growth or mortality among years. One assumption of the model is that mortality, length at recruitment, and growth are constant over the entire observed time period. This may be unrealistic and some (or all) may vary substantially among years in response to some environmental driver that varies among years. We believe that the current model does not capture the historical dynamics sufficiently well to give any confidence in future projections. Further, if mortality, growth, and recruitment are all allowed to vary among years, then all projections become extremely sensitive to the future behaviour of these parameters, and this can only be assumed. We are currently collecting more data on growth and its variability among seasons and years in an attempt to constrain the behaviour of growth parameters in models where they are allowed to vary.

4. MANAGEMENT IMPLICATIONS

The biomass of cockles of 30 mm or more SL on Snake Bank in 2009 was considerably lower than that estimated from the last two surveys in 2007 and 2008, but similar to that in 2006. At an assumed size of 30 mm at recruitment to the fishery (historical assumption of size at recruitment), the estimated CAY (239 t) was substantially lower than the TACC (346 t). Current estimates of MCY (73–319 t) were always lower than the TACC. The 2009 length frequency distribution suggests there has been a slight increase in the recruitment of juveniles (under 20 mm SL) compared with recent years (2007 and 2008), and this could lead to relatively moderate levels of adult recruitment to the fishery in the near future.

Reported landings from Snake Bank declined steadily since the introduction of COC 1A to the QMS in 2002, averaging 168 t (49% of the TACC) between 2002–03 and 2007–08, which is less than most of the yield estimates. Landings in 2006–07 (111 t) were the lowest ever recorded, although this was more likely due to economic and market factors than stock availability. Landings in the most recent fishing year (2007–08) had increased to 151 t.

Overall, the 2009 biomass survey results and our simple yield estimates suggest that fishing at the level of recent average landings is likely to be sustainable in the short term. However, because the estimated CAY is lower than the TACC, and given the large fluctuations in cockle biomass at Snake Bank observed over the last three decades, fishing at the level of the TACC is not likely to be sustainable in the long term. Annual surveys to estimate biomass and yield (CAY) are required to monitor this stock and adjust catch limits accordingly.

5. ACKNOWLEDGMENTS

This work was funded by the Ministry of Fisheries under project COC2007/01B: Stock assessment of Snake Bank cockles. Many thanks to Marie Jordan, Dane Buckthought, Holly Ferguson, Yair Kohn, and John Kramer for their help with fieldwork, and Yair Kohn, Mark Fitzpatrick, and Petra Chappell for measuring cockles.

6. REFERENCES

- Annala, J.H.; Sullivan, K.J.; (comps.) (1996). Report from the Fishery Assessment Plenary, April–May 1996: stock assessments and yield estimates. 308 p. (Unpublished report held in NIWA library, Wellington.)
- Boyd, R.O.; Gowing, L.; Reilly, J.L. (2004). 2000-2001 national marine recreational fishing survey: diary results and harvest estimates. Final Research Report for Ministry of Fisheries project REC2000/03. 81 p. (Unpublished report held by Ministry of Fisheries, Wellington.)
- Boyd, R.O.; Reilly, J.L. (2002). 1999/2000 national marine recreational fishing survey: harvest estimates. Final Research Report for Ministry of Fisheries project REC98/03. 28 p. (Unpublished report held by Ministry of Fisheries, Wellington.)
- Bradford, E. (1998). Harvest estimates from the 1996 national marine recreational fishing surveys. New Zealand Fisheries Assessment Research Document 98/16. 27 p. (Unpublished report held in NIWA library, Wellington.)
- Breen, P.; Andrew, N.L.; Kendrick, T.H. (2000). The 2000 stock assessment of paua (*Haliotis iris*) in PAU 5B using an improved Bayesian length-based model. *New Zealand Fisheries Assessment Report 2000/48*. 36 p.
- Cranfield, H.J.; Michael, K.P.; Francis, R.I.C.C. (1996). Growth rates of five species of subtidal clam on a beach in the South Island, New Zealand. *Marine and Freshwater Research* 47(6): 773–784.
- Cranfield, H.J.; Michael, K.P.; Stotter, D. (1993). Estimates of growth, mortality, and yield per recruit for New Zealand surf clams. New Zealand Fisheries Assessment Research Document 93/20. 47 p. (Unpublished report held in NIWA library, Wellington.)
- Cryer, M. (1997). Assessment of cockles on Snake Bank, Whangarei Harbour, for 1996. New Zealand Fisheries Assessment Research Document 97/2. 29 p. (Unpublished report held in NIWA library, Wellington.)
- Cryer, M.; Holdsworth, J. (1993). Productivity estimates for Snake Bank cockles, August 1992 to August 1993. MAF Fisheries Northern Fisheries Region Internal Report, Auckland 17 p. (Unpublished report held by NIWA, Auckland.)
- Cryer, M.; McKenzie, J.R.; Breen, P.A.; Kim, S.; Parkinson, D.M.; Smith, M.D.; MacKay, G.; Tasker, R. (2003). Biomass surveys and stock assessment of cockles in Whangarei Harbour, including Snake Bank, 2002. Draft New Zealand Fisheries Assessment Report for Ministry of Fisheries project 2001/01. 40 p. (Unpublished report held by Ministry of Fisheries, Wellington.)
- Cryer, M.; Parkinson, D.M. (2001). Biomass surveys and preliminary stock assessment of cockles, Snake Bank, Whangarei Harbour, 2001. Final Research Report for Ministry of Fisheries Research Project COC2000/01, Objectives 1 & 3. 15 p. (Unpublished report held by Ministry of Fisheries, Wellington.)
- Cryer, M.; Watson, T.G.; Smith, M.D.; MacKay, G.; Tasker, R. (2004). Biomass survey and stock assessment of cockles on Snake Bank, Whangarei Harbour, 2003. Draft New Zealand Fisheries Assessment Report for Ministry of Fisheries project COC2002/01 40 p. (Unpublished report held by Ministry of Fisheries, Wellington.)
- Fournier, D.A.; Sibert, J.R.; Majkowski, J.; Hampton, J. (1990). MULTIFAN: a likelihood-based method for estimating growth parameters and age composition from multiple length frequency data sets illustrated using data for southern bluefin tuna (*Thunnus maccoyi*). *Canadian Journal of Fisheries and Aquatic Sciences* 47: 301–317.
- Francis, R.I.C.C. (1988). Maximum likelihood estimation of growth and growth variability from tagging data. *New Zealand Journal of Marine and Freshwater Research* 22(1): 43–51.

- Haddon, M.; Mundy, C.; Tarbath, D. (2007). Using an inverse-logistic model to describe growth increments of blacklip abalone (*Haliotis rubra*) in Tasmania. *Fishery Bulletin* 106(1): 58–71.
- Hartill, B.; Cryer, M. (2000). Shellfish harvesting in the Auckland metropolitan area. *NIWA Technical Report* 96. 51 p.
- Kruskal, W.H.; Wallis, W.A. (1952). Use of ranks in one-criterion variance analysis. *Journal of the American Statistical Association* 47: 583–621.
- Larcombe, M.F. (1971). The ecology, population dynamics, and energetics of some soft shore molluscs. Unpublished PhD thesis. University of Auckland, Auckland, New Zealand. 250 p.
- Martin, N.D. (1984). *Chione stutchburyi* population responses to exploitation. Unpublished PhD thesis. University of Auckland, Auckland, New Zealand. 75 p.
- McKenzie, J.R.; Cryer, M.; Breen, P.A.; Kim, S. (2003). A length-based model for cockles on Snake Bank, Whangarei Harbour, 2002. Final Research Report for Ministry of Fisheries Research project COC2001/01, Objective 2. 35 p. (Unpublished report held by Ministry of Fisheries, Wellington.)
- Ministry of Fisheries Science Group (2006). Report from the Fishery Assessment Plenary, May 2006: stock assessments and yield estimates. 875 p. (Unpublished report held in NIWA library, Wellington.)
- Morrison, M. (2000). Stock assessment of cockles on Snake Bank, Whangarei Harbour, 1999. *New Zealand Fisheries Assessment Report* 2000/26. 20 p.
- Morrison, M.; Cryer, M. (1999). Stock assessment of cockles on Snake and MacDonald Banks, Whangarei Harbour, 1998. *New Zealand Fisheries Assessment Research Document* 99/07. 9 p. (Unpublished report held in NIWA library, Wellington.)
- Morrison, M.; Parkinson, D. (2001). Stock assessment of cockles on Snake and MacDonald Banks, Whangarei Harbour, 2000. *New Zealand Fisheries Assessment Report* 2001/19. 16 p.
- Otter Research (1992). MULTIFAN 32(f). User's guide and reference manual. 67 p.
- Ricker, W.E. (1975). Computation and interpretation of biological statistics of fish populations. Department of the Environment, Fisheries and Marine Service, Ottawa, Canada. 382 p.
- Snedecor, G.W.; Cochran, W.G. (1989). Statistical methods. 8th Edition. Iowa State University Press, Ames, Iowa, USA. 503 p.
- Teirney, L.D.; Kilner, A.R.; Millar, R.B.; Bradford, E.; Bell, J.D. (1997). Estimation of recreational harvests from 1991-92 to 1993-94. *New Zealand Fisheries Assessment Research Document* 97/15. 43 p. (Unpublished report held in NIWA library, Wellington.)
- von Bertalanffy, L. (1938). A quantitative theory of organic growth. *Human Biology* 10: 181–213.
- Watson, T.G.; Cryer, M.; Smith, M.D.; MacKay, G.; Tasker, R. (2005). Biomass survey and stock assessment of cockles on Snake Bank, Whangarei Harbour, 2004. *New Zealand Fisheries Assessment Report* 2005/15. 36 p.
- Williams, J.R.; Cryer, M.; McKenzie, J.R.; Smith, M.D.; Watson, T.G.; MacKay, G.; Tasker, R. (2006a). Biomass survey and stock assessment of cockles (*Austrovenus stutchburyi*) on Snake Bank, Whangarei Harbour, 2005. *New Zealand Fisheries Assessment Report* 2006/21. 21 p.
- Williams, J.R.; Smith, M.D.; Mackay, G. (2006b). Biomass survey and stock assessment of cockles (*Austrovenus stutchburyi*) on Snake Bank, Whangarei Harbour, 2006. *New Zealand Fisheries Assessment Report* 2006/38. 21 p.
- Williams, J.R.; Smith, M.D.; Mackay, G. (2008a). Biomass survey and stock assessment of cockles (*Austrovenus stutchburyi*) on Snake Bank, Whangarei Harbour, 2007. *New Zealand Fisheries Assessment Report* 2008/3. 22 p.
- Williams, J.R.; Smith, M.D.; Mackay, G. (2008b). Biomass survey and stock assessment of cockles (*Austrovenus stutchburyi*) on Snake Bank, Whangarei Harbour, 2008. *New Zealand Fisheries Assessment Report* 2008/43. 22 p.