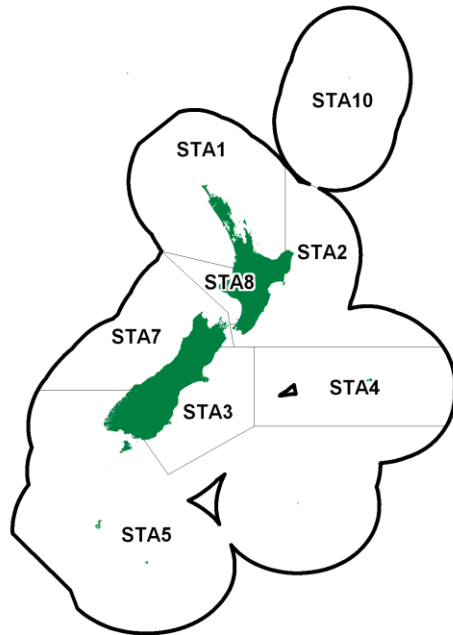


**STARGAZER (STA)**

(*Kathetostoma giganteum*)  
Puwhara

**1. FISHERY SUMMARY****1.1 Commercial fisheries**

Giant stargazer (*Kathetostoma giganteum*, Uranocopidae) is a moderate-sized benthic teleost distributed widely in New Zealand waters. It is found on muddy and sandy substrates to depths of 500 m, but is most common between 50–300 m on the continental shelf around the South Island (Anderson et al 1998), where it supports a moderate-value, commercial trawl fishery. It was incorporated into the QMS on 1 October 1997 and is managed as eight separate Quota Management Areas (QMAs) or Fishstocks at this time: STA 1–5, 7–8, and 10.

It is caught by both directed fishing and as bycatch of fisheries targeting other species. The main target fishery is on the Stewart-Snares shelf west of Stewart Island (Statistical Areas 029–030). Other target fisheries exist on the west coast of the South Island (WCSI) and off Cape Campbell on the east coast of the South Island (ECSI). It is also caught by small domestic trawl vessels targeting red cod (*Pseudophycis baccus*), tarakihi (*Nemadactylus macropterus*), flatfishes (*Colistum* spp., *Peltorhamphus* spp., and *Rhombosolea* spp.), and scampi (*Metanephrops challengeri*) on the continental shelf throughout its range, and by larger, foreign-licensed and New Zealand-chartered foreign vessels targeting barracouta (*Thyrssites atun*), jack mackerels (*Trachurus* spp.), and squid (*Nototodarus* spp.) in deeper waters, in particular on the western Chatham Rise and on the continental slope surrounding the Stewart-Snares shelf. Giant stargazer is an important bycatch of scampi fishing in STA 2–4. Catches by methods other than bottom trawling are minimal. Reported landings from 1979 to 1987–88 are given in Table 1.

**Table 1: Reported landings (t) of giant stargazer by vessel flag from 1979 to 1987–88.**

| Year  | New Zealand |           | Foreign licensed | Total | Year     | New Zealand |           | Foreign licensed | Total |
|-------|-------------|-----------|------------------|-------|----------|-------------|-----------|------------------|-------|
|       | Domestic    | Chartered |                  |       |          | Domestic    | Chartered |                  |       |
| 1979* | 387         | 155       | 159              | 701   | 1983–84† | 1 463       | 525       | 360              | 2 348 |
| 1980* | 723         | -         | -                | 723   | 1984–85† | 1 027       | 321       | 178              | 1 526 |
| 1981* | 1 010       | 314       | 84               | 1 408 | 1985–86† | 1 304       | 386       | 142              | 1 832 |
| 1982* | 902         | 340       | 283              | 1 526 | 1986–87† | 1 126       | 379       | 63               | 1 568 |
| 1983* | 1 189       | 329       | 465              | 1 983 | 1987–88† | 839         | 331       | 26               | 1 196 |

\*MAF data. †FSU data.

## STARGAZER (STA)

The total catch between 1979 and 1986–87 was variable, ranging between 701 and 2348 t and averaging 1481 t/year. Different trends are apparent for domestic and foreign vessels. The domestic and chartered catch was relatively stable throughout the middle and later half of the series, which probably reflects the stability of effort in the red cod, tarakihi, flatfish, and barracouta fisheries at this time as well as better reporting compliance. However, landings by licensed foreign vessels declined steadily from a high of 465 t in 1983 to a low of 26 t in 1986–87, probably reflecting the declining importance of licensed foreign vessels in New Zealand's deepwater fisheries following the phasing-in of the QMS, which began in 1983 and which was fully implemented by 1986–87. Reported landings since 1983 by Fishstock are given in Table 3, and Figure 1 graphs the historical landings and TACC values for the main STA stocks. The total catches for 1986–87 and 1987–88 in Table 1 are less than those in Table 3 because of under-reporting to the FSU during those years.

After 1983, the catch began to increase rapidly, reaching 3426 t in 1990–91, and averaging just over 3000 t thereafter. The increase in catch is due to a number of factors, including: (a) increased target fishing in Southland (STA 5); (b) the availability of more quota through the decisions of the QAA; (c) better management of quotas by quota owners; (d) quota trading in STA 3, 4, 5 and 7; (e) changes in fishing patterns in the Canterbury Bight (STA 3) and the west coast of the South Island (STA 7); (f) a possible increase in abundance of stargazer in STA 7; and (g) increases in the STA 3, 5, and 7 TACCs introduced under the Adaptive Management Programme (AMP) in the 1991–92 fishing year.

The AMP was a management regime within the QMS for data-poor New Zealand Fishstocks that were considered able to sustain increased exploitation. Under the AMP, quota owners collected additional data from the fishery (typically fine-scale catch-effort data and rudimentary but necessary biological data such as fish length and sex) in return for an increased TACC. Under the AMP, TACCs for five giant stargazer Fishstocks (STA 1–3, 5, and 7) were increased at the start of the 1991–92 fishing year, and a sixth (STA 8) was increased in 1993–94. However, the TACCs for Fishstocks STA 1–3, 5, and 8 reverted to their pre-AMP levels in 1997–98, following the removal of these fishstocks from the AMP in July 1997 because of the failure of quota owners to meet the data-collection requirements of the AMP. In recent years, landings in three of these Fishstocks (STA 1–2 and 5) have exceeded their reduced, post-AMP TACCs; although of these, STA 5 is the only one with a TACC greater than 40 t at this time. STA 3 and STA 7 were reviewed in 1998 and retained in the AMP until the end of the 2002–03 fishing year. The TACC in STA 7 further increased to 997 t at the start of the 2002–03 fishing year with a TAC of 1000 t (which included a 2 t recreational and a 1 t customary allowance). STA 7 was reviewed again in 2007 (Starr et al 2007) and retained in the AMP, in October of 2010 the TACC was increased to 1042 t, increasing the TAC to 1072 t. STA 3 was reviewed in 2008 (Starr et al 2008) and retained at the existing TACC of 902 t, with customary and recreational allocations of 1 t and 2 t respectively, giving a total TAC of 905 t. All AMP programmes ended on 30 September 2009.

STA 5, STA 7, and STA 3 are the most important, in terms of the recorded landed catch, among the eight Fishstocks, with smaller contributions from STA 2 and STA 4. The STA 4 TACC is set at 2158 t, the highest among the eight STA Fishstocks, although catches are only a tenth of this level in most years and the TACC has never been approached or exceeded. Most of the STA 4 catch is caught as bycatch of fishing directed at other target species. A high recorded landed catch in 1990–91 (790 t) was due to exploratory fishing for these target species which has since ceased. Increased catches in STA 2 from 1990–91 were due to the development of the scampi fishery in this FMA.

Although the TACC in STA 7 was increased to 700 t in 1991–92 under the terms of the AMP, it was overcaught in nearly every subsequent fishing year up to 2002–03, when the TACC was further increased to 997 t. Landings reached a high of 1440 t in 2000–01, before dropping back to 800 t in 2001–02. These high recorded landings resulted mainly from the use of bycatch trades with barracouta and flatfishes. With the removal of the bycatch trade system in October 2001, fishers now face the penalty of high deemed-values for any overcatch, and it is likely that these penalties have been the cause of the reduction in the overcatch in this Fishstock.

Table 2: Reported landings (t) for the main QMAs from 1931 to 1982.

| Year    | STA 1 | STA 2 | STA 3 | STA 4 | Year | STA 1 | STA 2 | STA 3 | STA 4 |
|---------|-------|-------|-------|-------|------|-------|-------|-------|-------|
| 1931–32 | 0     | 0     | 0     | 0     | 1957 | 0     | 15    | 5     | 0     |
| 1932–33 | 0     | 0     | 0     | 0     | 1958 | 0     | 25    | 11    | 0     |
| 1933–34 | 0     | 0     | 0     | 0     | 1959 | 0     | 23    | 13    | 0     |
| 1934–35 | 0     | 0     | 0     | 0     | 1960 | 0     | 18    | 17    | 0     |
| 1935–36 | 0     | 0     | 0     | 0     | 1961 | 0     | 7     | 16    | 0     |
| 1936–37 | 0     | 0     | 0     | 0     | 1962 | 0     | 6     | 22    | 0     |
| 1937–38 | 0     | 0     | 0     | 0     | 1963 | 0     | 10    | 15    | 0     |
| 1938–39 | 0     | 0     | 0     | 0     | 1964 | 0     | 9     | 22    | 0     |
| 1939–40 | 0     | 0     | 0     | 0     | 1965 | 0     | 12    | 17    | 0     |
| 1940–41 | 0     | 0     | 0     | 0     | 1966 | 0     | 12    | 31    | 0     |
| 1941–42 | 0     | 0     | 0     | 0     | 1967 | 0     | 24    | 32    | 0     |
| 1942–43 | 0     | 0     | 0     | 0     | 1968 | 0     | 28    | 32    | 0     |
| 1943–44 | 0     | 0     | 0     | 0     | 1969 | 0     | 40    | 25    | 0     |
| 1944    | 0     | 0     | 0     | 0     | 1970 | 0     | 42    | 80    | 0     |
| 1945    | 0     | 0     | 0     | 0     | 1971 | 0     | 37    | 72    | 0     |
| 1946    | 0     | 0     | 0     | 0     | 1972 | 0     | 30    | 71    | 0     |
| 1947    | 0     | 0     | 0     | 0     | 1973 | 0     | 36    | 78    | 0     |
| 1948    | 0     | 0     | 0     | 0     | 1974 | 0     | 31    | 73    | 7     |
| 1949    | 0     | 0     | 0     | 0     | 1975 | 0     | 10    | 75    | 3     |
| 1950    | 0     | 1     | 0     | 0     | 1976 | 0     | 26    | 99    | 10    |
| 1951    | 0     | 1     | 0     | 0     | 1977 | 0     | 17    | 70    | 0     |
| 1952    | 0     | 8     | 0     | 0     | 1978 | 0     | 29    | 72    | 8     |
| 1953    | 0     | 2     | 0     | 0     | 1979 | 1     | 23    | 230   | 104   |
| 1954    | 0     | 7     | 0     | 0     | 1980 | 3     | 28    | 331   | 57    |
| 1955    | 0     | 2     | 3     | 0     | 1981 | 15    | 25    | 487   | 95    |
| 1956    | 0     | 12    | 4     | 0     | 1982 | 4     | 22    | 565   | 89    |

| Year    | STA 5 | STA 6 | STA 7 | Year | STA 5 | STA 6 | STA 7 |
|---------|-------|-------|-------|------|-------|-------|-------|
| 1931–32 | 0     | 0     | 0     | 1957 | 0     | 2     | 2     |
| 1932–33 | 0     | 0     | 0     | 1958 | 0     | 4     | 3     |
| 1933–34 | 0     | 0     | 0     | 1959 | 0     | 4     | 3     |
| 1934–35 | 0     | 0     | 0     | 1960 | 0     | 4     | 2     |
| 1935–36 | 0     | 0     | 0     | 1961 | 0     | 2     | 1     |
| 1936–37 | 0     | 0     | 0     | 1962 | 5     | 2     | 1     |
| 1937–38 | 0     | 0     | 0     | 1963 | 1     | 3     | 1     |
| 1938–39 | 0     | 0     | 0     | 1964 | 0     | 3     | 1     |
| 1939–40 | 0     | 0     | 0     | 1965 | 2     | 4     | 1     |
| 1940–41 | 0     | 0     | 0     | 1966 | 27    | 4     | 2     |
| 1941–42 | 0     | 0     | 0     | 1967 | 6     | 38    | 2     |
| 1942–43 | 0     | 0     | 0     | 1968 | 7     | 24    | 3     |
| 1943–44 | 0     | 0     | 0     | 1969 | 21    | 14    | 3     |
| 1944    | 0     | 0     | 0     | 1970 | 124   | 78    | 2     |
| 1945    | 0     | 0     | 0     | 1971 | 87    | 50    | 3     |
| 1946    | 0     | 0     | 0     | 1972 | 70    | 41    | 2     |
| 1947    | 0     | 0     | 0     | 1973 | 38    | 36    | 2     |
| 1948    | 0     | 0     | 0     | 1974 | 128   | 29    | 3     |
| 1949    | 0     | 0     | 0     | 1975 | 92    | 34    | 1     |
| 1950    | 0     | 0     | 0     | 1976 | 348   | 54    | 2     |
| 1951    | 0     | 0     | 0     | 1977 | 293   | 53    | 1     |
| 1952    | 0     | 1     | 1     | 1978 | 268   | 61    | 2     |
| 1953    | 0     | 0     | 0     | 1979 | 245   | 86    | 1     |
| 1954    | 0     | 1     | 1     | 1980 | 467   | 132   | 1     |
| 1955    | 0     | 0     | 0     | 1981 | 557   | 322   | 2     |
| 1956    | 0     | 2     | 2     | 1982 | 500   | 270   | 3     |

## Notes:

1. The 1931–1943 years are April–March but from 1944 onwards are calendar years.
2. Data up to 1985 are from fishing returns: Data from 1986 to 1990 are from Quota Management Reports.
3. Data for the period 1931 to 1982 are based on reported landings by harbour and are likely to be underestimated as a result of under-reporting and discarding practices. Data includes both foreign and domestic landings. Data were aggregated to FMA using methods and assumptions described by Francis & Paul (2013).

**STARGAZER (STA)**

**Table 3: Reported landings (t) of giant stargazer by QMS Fishstock (QMA) from 1983 to 2015–16. TACCs from 1986–87 to 2014–15 are also provided.**

| Fishstock<br>FMA(s) | STA 1<br>1 & 9 |      | STA 2<br>2 |      | STA 3<br>3 |      | STA 4<br>4 |       | STA 5<br>5 & 6 |       |
|---------------------|----------------|------|------------|------|------------|------|------------|-------|----------------|-------|
|                     | Landings       | TACC | Landings   | TACC | Landings   | TACC | Landings   | TACC  | Landings       | TACC  |
| 1983*               | 8              | -    | 34         | -    | 540        | -    | 168        | -     | 843            | -     |
| 1984*               | 5              | -    | 24         | -    | 588        | -    | 143        | -     | 1023           | -     |
| 1985*               | 9              | -    | 15         | -    | 438        | -    | 82         | -     | 695            | -     |
| 1986*               | 12             | -    | 24         | -    | 415        | -    | 95         | -     | 566            | -     |
| 1986–87             | 10             | 20   | 31         | 30   | 644        | 560  | 72         | 2 000 | 738            | 1 060 |
| 1987–88             | 3              | 20   | 46         | 33   | 783        | 581  | 110        | 2 005 | 886            | 1 144 |
| 1988–89             | 3              | 20   | 41         | 37   | 675        | 591  | 134        | 2 005 | 1 215          | 1 173 |
| 1989–90             | 9              | 21   | 53         | 37   | 747        | 703  | 218        | 2 009 | 1 150          | 1 175 |
| 1990–91             | 8              | 21   | 125        | 37   | 674        | 734  | 790        | 2 014 | 1 061          | 1 239 |
| 1991–92             | 18             | 50   | 105        | 100  | 756        | 900  | 366        | 2 014 | 1 056          | 1 500 |
| 1992–93             | 19             | 50   | 115        | 101  | 811        | 901  | 231        | 2 014 | 1 247          | 1 500 |
| 1993–94             | 8              | 50   | 73         | 101  | 871        | 902  | 113        | 2 014 | 1 327          | 1 500 |
| 1994–95             | 10             | 50   | 74         | 101  | 829        | 902  | 223        | 2 014 | 1 216          | 1 525 |
| 1995–96             | 17             | 50   | 69         | 101  | 876        | 902  | 259        | 2 014 | 1 159          | 1 525 |
| 1996–97             | 22             | 50   | 77         | 101  | 817        | 902  | 149        | 2 014 | 977            | 1 525 |
| 1997–98             | 29             | 21   | 54         | 38   | 667        | 902  | 263        | 2 014 | 544            | 1 264 |
| 1998–99             | 27             | 21   | 46         | 38   | 641        | 902  | 137        | 2 014 | 1 145          | 1 264 |
| 1999–00             | 36             | 21   | 42         | 38   | 719        | 902  | 161        | 2 014 | 1 327          | 1 264 |
| 2000–01             | 26             | 21   | 45         | 38   | 960        | 902  | 233        | 2 014 | 1 439          | 1 264 |
| 2001–02             | 34             | 21   | 58         | 38   | 816        | 902  | 391        | 2 158 | 1 137          | 1 264 |
| 2002–03             | 31             | 21   | 41         | 38   | 863        | 902  | 308        | 2 158 | 967            | 1 264 |
| 2003–04             | 23             | 21   | 27         | 38   | 578        | 902  | 186        | 2 158 | 1 193          | 1 264 |
| 2004–05             | 27             | 21   | 28         | 38   | 646        | 902  | 366        | 2 158 | 1 282          | 1 264 |
| 2005–06             | 34             | 21   | 30         | 38   | 824        | 902  | 359        | 2 158 | 1 347          | 1 264 |
| 2006–07             | 22             | 21   | 31         | 38   | 719        | 902  | 292        | 2 158 | 1 359          | 1 264 |
| 2007–08             | 36             | 21   | 26         | 38   | 572        | 902  | 436        | 2 158 | 1 171          | 1 264 |
| 2008–09             | 35             | 21   | 22         | 38   | 574        | 902  | 139        | 2 158 | 1 137          | 1 264 |
| 2009–10             | 17             | 21   | 26         | 38   | 576        | 902  | 198        | 2 158 | 1 339          | 1 264 |
| 2010–11             | 21             | 21   | 19         | 38   | 570        | 902  | 134        | 2 158 | 1 235          | 1 264 |
| 2011–12             | 21             | 28   | 17         | 38   | 397        | 902  | 213        | 2 158 | 1 288          | 1 264 |
| 2012–13             | 19             | 21   | 13         | 38   | 439        | 902  | 133        | 2 158 | 1 140          | 1 264 |
| 2013–14             | 20             | 21   | 14         | 38   | 499        | 902  | 133        | 2 158 | 1 274          | 1 264 |
| 2014–15             | 12             | 21   | 10         | 38   | 497        | 902  | 172        | 2 158 | 1 144          | 1 264 |
| 2015–16             | 10             | 21   | 11         | 38   | 490        | 902  | 115        | 2 158 | 1 264          | 1 264 |

| Fishstock<br>FMA(s) | STA 7<br>7 |       | STA 8<br>8 |      | STA 10<br>10 |      | Total    |       |
|---------------------|------------|-------|------------|------|--------------|------|----------|-------|
|                     | Landings   | TACC  | Landings   | TACC | Landings     | TACC | Landings | TACC  |
| 1983*               | 323        | -     | 3          | -    | 0            | -    | 1 919    | -     |
| 1984*               | 444        | -     | 3          | -    | 0            | -    | 2 230    | -     |
| 1985*               | 328        | -     | 4          | -    | 0            | -    | 1 571    | -     |
| 1986*               | 362        | -     | 3          | -    | 0            | -    | 1 477    | -     |
| 1986–87             | 487        | 450   | 7          | 20   | 0            | 10   | 1 990    | 4 150 |
| 1987–88             | 505        | 493   | 5          | 20   | 0            | 10   | 2 338    | 4 306 |
| 1988–89             | 520        | 499   | 5          | 20   | 0            | 10   | 2 593    | 4 355 |
| 1989–90             | 585        | 525   | 1          | 22   | 0            | 10   | 2 763    | 4 502 |
| 1990–91             | 762        | 528   | 6          | 22   | 0            | 10   | 3 426    | 4 605 |
| 1991–92             | 920        | 700   | 18         | 22   | 0            | 10   | 3 239    | 5 296 |
| 1992–93             | 861        | 702   | 5          | 22   | 0            | 10   | 3 289    | 5 300 |
| 1993–94             | 715        | 702   | 4          | 50   | 0            | 10   | 3 111    | 5 329 |
| 1994–95             | 730        | 702   | 7          | 50   | 0            | 10   | 3 089    | 5 354 |
| 1995–96             | 877        | 702   | 4          | 50   | 0            | 10   | 3 261    | 5 354 |
| 1996–97             | 983        | 702   | 10         | 50   | 0            | 10   | 3 034    | 5 354 |
| 1997–98             | 564        | 702   | 10         | 22   | 0            | 10   | 2 132    | 4 973 |
| 1998–99             | 949        | 702   | 2          | 22   | 0            | 10   | 2 946    | 4 973 |
| 1999–00             | 1 184      | 702   | 3          | 22   | 0            | 10   | 3 472    | 4 973 |
| 2000–01             | 1 440      | 702   | 4          | 22   | 0            | 10   | 4 146    | 4 973 |
| 2001–02             | 802        | 702   | 4          | 22   | 0            | 10   | 3 238    | 5 117 |
| 2002–03             | 957        | 997   | 4          | 22   | 0            | 10   | 3 171    | 5 412 |
| 2003–04             | 934        | 997   | 6          | 22   | 0            | 10   | 2 947    | 5 412 |
| 2004–05             | 1 028      | 997   | 5          | 22   | 0            | 10   | 3 381    | 5 412 |
| 2005–06             | 1 010      | 997   | 3          | 22   | 0            | 10   | 3 606    | 5 412 |
| 2006–07             | 1 051      | 997   | 4          | 22   | 0            | 10   | 3 478    | 5 412 |
| 2007–08             | 1 014      | 997   | 3          | 22   | 0            | 10   | 3 258    | 5 412 |
| 2008–09             | 1 001      | 997   | 5          | 22   | 0            | 10   | 2 913    | 5 412 |
| 2009–10             | 1 093      | 997   | 6          | 22   | 0            | 10   | 3 247    | 5 456 |
| 2010–11             | 1 037      | 1 042 | 7          | 22   | 0            | 10   | 3 023    | 5 456 |
| 2011–12             | 1 056      | 1 042 | 7          | 22   | 0            | 10   | 3 006    | 5 456 |
| 2012–13             | 1 097      | 1 042 | 7          | 22   | 0            | 10   | 2 849    | 5 456 |
| 2013–14             | 1 062      | 1 042 | 6          | 22   | 0            | 10   | 3 007    | 5 456 |
| 2014–15             | 1 093      | 1 042 | 5          | 22   | 0            | 10   | 2 933    | 5 456 |
| 2015–16             | 1 132      | 1 122 | 5          | 22   | 0            | 10   | 3 027    | 5 536 |

\* MAF data

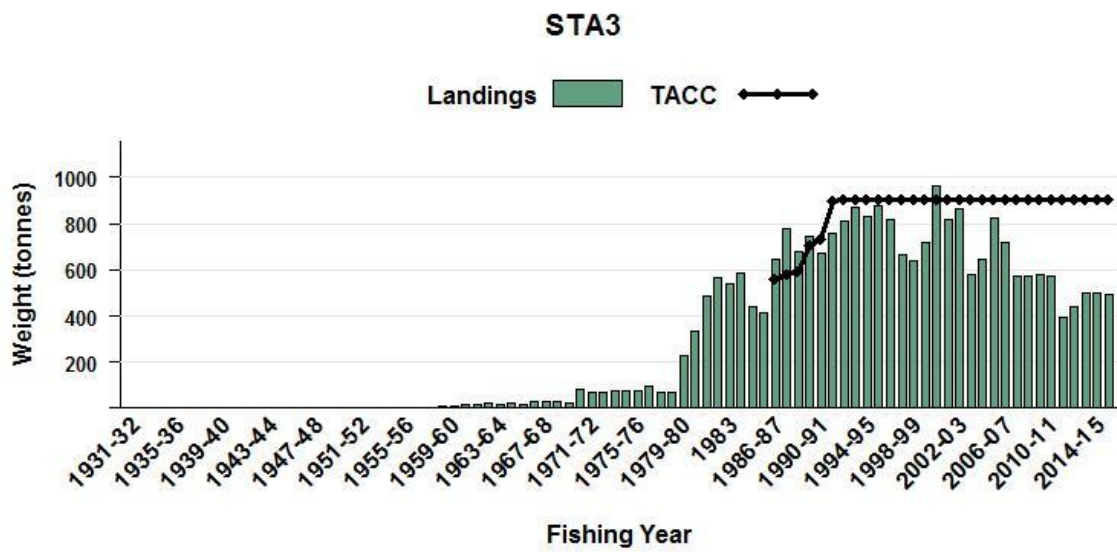
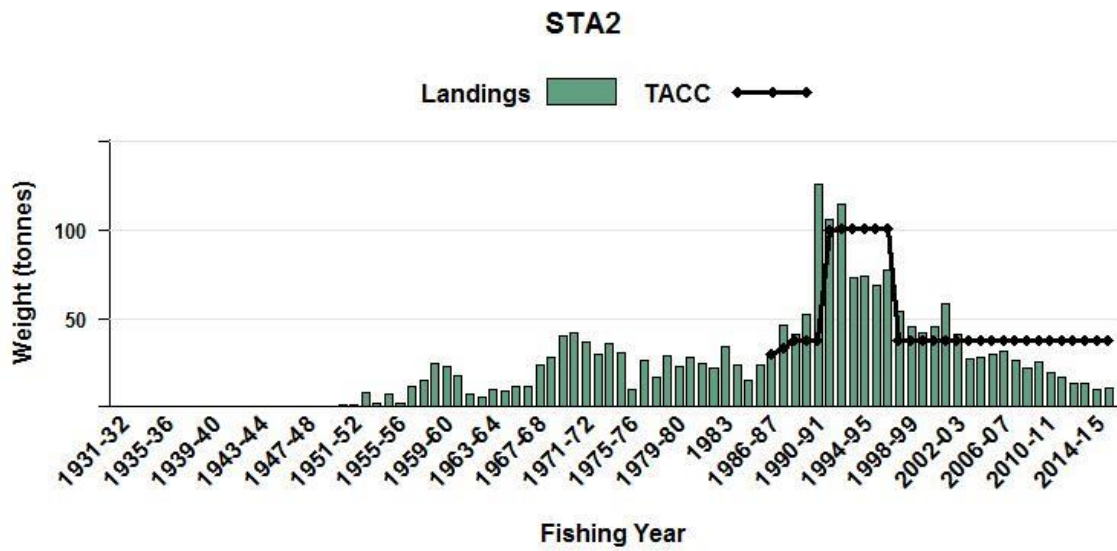
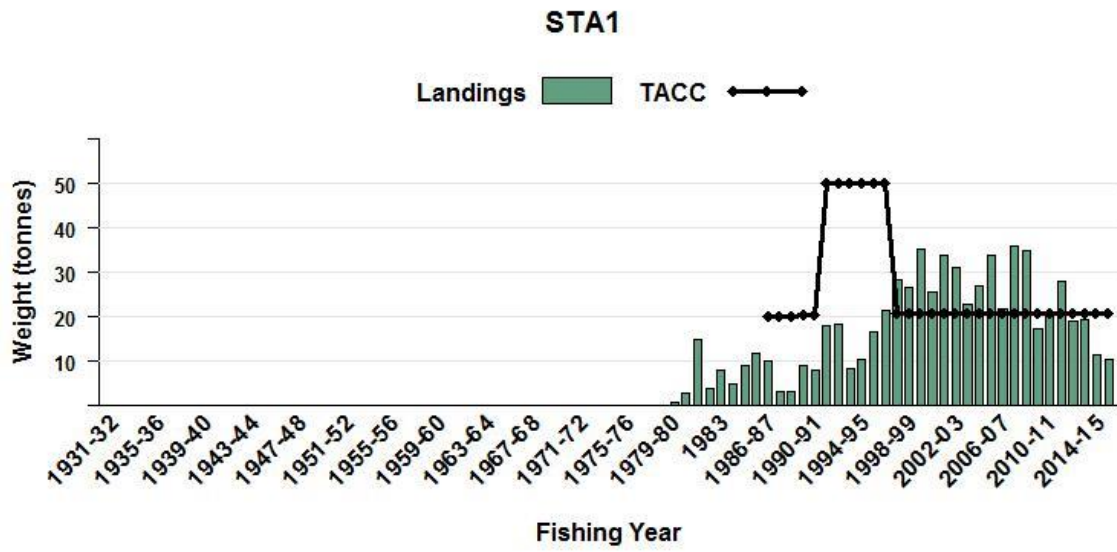


Figure 1: Reported commercial landings and TACC for the seven main STA stocks. From top to bottom: STA 1 (Auckland East), STA 2 (Central East) and STA 3 (South East Coast).

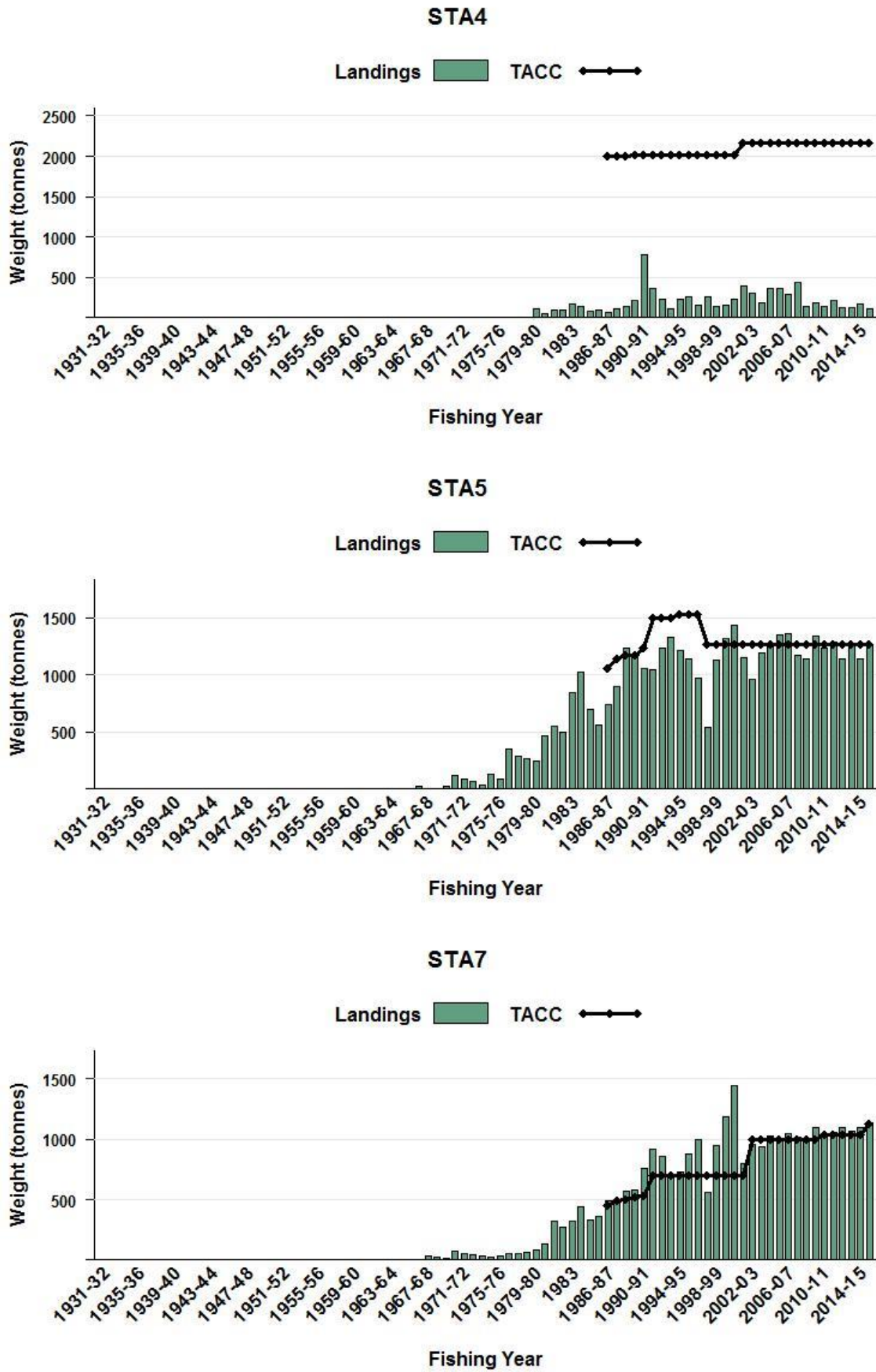


Figure 1 [Continued]: Reported commercial landings and TACC for the seven main STA stocks. From top to bottom: STA 4 (Chatham Rise), STA 5 (Southland), and STA 7 (Challenger).

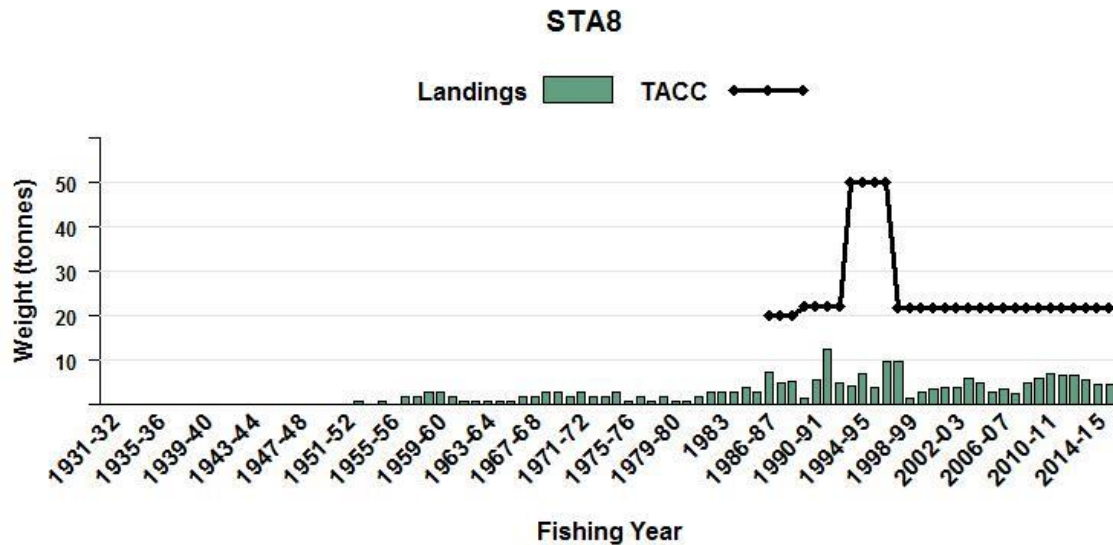


Figure 1 [Continued]: Reported commercial landings and TACC for the seven main STA stocks. STA 8 (Central Egmont).

Most of the stargazer catch is landed in a processed state. The conversion factors for giant stargazer were revised during the early 1990s to determine a conversion factor that was consistent with the main processed state (DVC). Recent analyses of catch and effort data from the STA 5 and STA 7 fisheries have taken these changes in the conversion factors into account in determining the landed catch (in greenweight). For STA 5, the correction for the changes in the conversion factors resulted in an increase (9–34%) in the annual landed catch from 1989–90 to 1996–97 (Langley & Bentley 2014). Similarly, for STA 7 the correction resulted in an increase (17–37%) in the annual landed catches from 1989–90 to 1996–97 (Langley 2015). These changes in conversion factor have not been applied to the total reported landings from the stargazer fishstocks in Tables 1 and 2 and Figure 1.

The landings data (Tables 1–3) probably include an unknown quantity of catch from other uranoscopid species misidentified as *K. giganteum*. Fishers in STA 1–3 and 8 have been known to report brown (*Gnathagnus innotabilis*) and spotted stargazer (*Genyagnus monopterygius*) as *K. giganteum* in the past. Landings in STA 4 and 5 probably include an unknown amount of an undescribed sister species, banded stargazer (*Kathetostoma* sp.). Although the true extent of misreporting due to misidentification is unknown, it is likely to be small.

## 1.2 Recreational fisheries

Stargazer were not reported as being caught by recreational fishers in surveys conducted in the Ministry of Fisheries South region in 1991–92, Central region in 1992–93 and North region in 1993–94. In a Ministry of Fisheries national survey in 1996, a few giant stargazer were reported in STA 1 and 3, with an estimated take of 1000 fish in STA 1 and less than 500 fish taken in STA 3 (Bradford 1998). No giant stargazer catch was recorded for the recreational fishers during the 1999–2000 national diary survey (Boyd & Reilly 2002).

## 1.4 Customary non-commercial fisheries

No quantitative information is available on the level of customary non-commercial take.

## 1.5 Illegal catch

No quantitative information is available on the level of illegal catch.

## 1.6 Other sources of mortality

No quantitative information is available on the level of other sources of mortality.



## 2. BIOLOGY

Giant stargazer is found throughout the New Zealand EEZ. It is most plentiful around the South Island (STA 3, 5, & 7) and on the Mernoo Bank on the Chatham Rise (STA 4).

Using data collected from the West Coast South Island trawl survey series (Drummond & Stevenson, 1995a, 1995b, 1996; Stevenson 1998; Stevenson & Hanchet 2000; Stevenson 2002, 2004), Manning (2008) found that giant stargazer reach sexual maturity at a length of about 40–55 cm in total length (TL), depending on sex, at an age of between 5–7 years. Age and growth studies suggest that some individuals reach a maximum age of at least 25 years (Sutton 1999; Manning & Sutton 2004; Sutton 2004; Manning & Sutton 2007a, 2007b). Otolith growth zones have not been validated. A number of attempts at growth zone validation have been undertaken unsuccessfully. A tag and release programme was initiated with all released fish being injected with oxytetracycline as part of the East Coast South Island trawl survey. A single fish has been recaptured but the otoliths were not recovered. Andrews (2009) investigated the feasibility of using lead-radium dating of otoliths as a means of validating age. However, the levels of radium-226 in stargazer otoliths were too low (nearly 10 times lower than expected) to generate meaningful results. Using maximum-likelihood methods, Manning & Sutton (2004) found that giant-stargazer growth differs significantly between the east, south, and west coasts of the South Island. They suggested that these differences represented different biological stock units in these areas, although the true stock structure is unclear (Tate 1987). Manning (2005) investigated the effect of assuming alternative growth models with different functional forms on the data and conclusions presented by Manning & Sutton (2004). His results were consistent with the earlier results.

$M$  was estimated using the equation  $M = \ln 100 / t_{\max}$ , where  $t_{\max}$  is the maximum age to which 1% of the population survives in an unexploited stock. Using an unvalidated maximum age of 26 years, yields  $M = 0.18$ . Preliminary results of the STA 7 quantitative stock assessment (Manning 2008) suggested 0.18 was an underestimate of the unknown true value. A revised estimate based on applying Hoenig's (1983) regression to the age composition data from the west coast South Island survey series suggested that a value of 0.23 is more reasonable (Manning 2008). Although the west coast South Island age composition data were collected from an exploited stock, 0.23 is considered to be closer to the true value than 0.18.

Stargazer have an annual reproductive cycle with a winter spawning season. Spawning probably occurs in mid and outer shelf waters all around New Zealand. The generalised spawning date assumed in the age and growth studies cited above is 1 July in any given calendar year.

Biological parameters relevant to the stock assessment are given in Table 4.

**Table 4: Estimates of giant stargazer biological parameters**

| Fishstock   | Estimate |      |       |      | Source          |          |
|---|----------|------|-------|------|-----------------|----------|
| <u>1. Natural mortality (<math>M</math>)</u>  |          |      |       |      |                 |          |
| STA 5   | 0.20     |      |       |      | Sutton (2004)   |          |
| STA 7   | 0.18     |      |       |      | Manning (2006a) |          |
| <u>2. Weight = <math>a(\text{length})^b</math> (Weight in g, length in cm fork length).</u> |          |      |       |      |                 |          |
|   | Females  |      | Males |      | All fish        |          |
|   | a        | b    | a     | b    | a               | b        |
| STA 3   | -        | -    | -     | -    | 0.015           | 3.01     |
| STA 5   | -        | -    | -     | -    | 0.024           | 2.92     |
| STA 7   | 0.018    | 2.97 | 0.013 | 3.07 | -               | -        |
| <u>3. Length at maturity (cm total length)</u>  |          |      |       |      |                 |          |
|   |          |      |       |      | Females         |          |
|   |          |      |       |      | Males           |          |
|   |          |      |       |      | $L_{50}$        | $L_{95}$ |
| STA 7   |          |      |       |      | 54.37           | 11.24    |
|   |          |      |       |      | $L_{50}$        | $L_{95}$ |
|   |          |      |       |      | 40.98           | 14.90    |
| <u>4. Age at maturity (years)</u>   |          |      |       |      |                 |          |
|   |          |      |       |      | Females         |          |
|   |          |      |       |      | Males           |          |
|   |          |      |       |      | $A_{50}$        | $A_{95}$ |
| STA 7   |          |      |       |      | 7.23            | 4.34     |
|   |          |      |       |      | $A_{50}$        | $A_{95}$ |
|   |          |      |       |      | 5.53            | 4.38     |
| Manning (2008)  |          |      |       |      |                 |          |



Table 4 [continued]

|       | 5. von Bertalanffy length-at-age model parameter estimates |                         |            |              |                         |            |   |
|-------|--|-------------------------|------------|--------------|-------------------------|------------|---|
|       | Females  |                         |            | Males        |                         |            |   |
|       | $L_{\infty}$   | $K$ (yr <sup>-1</sup> ) | $t_0$ (yr) | $L_{\infty}$ | $K$ (yr <sup>-1</sup> ) | $t_0$ (yr) |   |
| STA 3 | 78.11  | 0.14                    | -1.25      | 61.49        | 0.2                     | -0.97      | Sutton (1999)   |
| STA 5 | 73.92  | 0.18                    | -0.22      | 59.12        | 0.19                    | -1.19      | Sutton (1999)   |
| STA 5 | 72.61  | 0.17                    | -0.02      | 60.76        | 0.18                    | -1.16      | Sutton (2004)   |
| STA 7 | 85.74  | 0.13                    | -0.666     | 71.00        | 0.15                    | -0.664     | Manning & Sutton<br>(2007a); a revision of<br>earlier results presented by<br>Manning & Sutton (2004) |

### 3. STOCKS AND AREAS

There are no new data that would alter the stock boundaries given in previous assessment documents.

It is not known if there is more than one giant stargazer stock in New Zealand. The present QMAs were used as a basis for Fishstocks, except for QMAs 5 and 6, which were combined (STA 5). The basis for choosing these boundaries was a general review of the distribution and relative abundance of stargazer within the fishery.

As noted, length-at-age differs significantly between the east, south and west coasts of the South Island (Manning & Sutton 2004, Manning 2005). This is consistent with the Fishstock boundaries.

### 4. STOCK ASSESSMENT

An integrated assessment for STA 7 was updated in 2008 with data that included the commercial catch, trawl survey biomass and proportions-at-age estimates, and commercial catch proportions-at-age.

#### 4.1 Trawl surveys

##### 4.1.1 Relative biomass

Indices of relative biomass are available from recent *Tangaroa* and *Kaharoa* trawl surveys of the Chatham Rise, East Coast South Island and West Coast South Island (Table 5, and Figures 2–4).

##### Chatham Rise Trawl Survey

The Chatham Rise Trawl Survey was designed primarily for hoki and covers the depth range 200–400 m. It therefore excludes stargazer habitat around the Mernoo Bank in less than 200 m. The survey biomass estimates for STA have fluctuated without trends since the series began in 1991 (Figure 2).

##### West Coast South Island Inshore Trawl Survey

Biomass estimates for the West Coast South Island inshore trawl survey time series are presented in Figure 3. Estimates declined from 1995 to a low in 2003 but have been steadily increasing since, with the 2013 and 2015 estimates being the highest in the time series. Most of the biomass has always come from the west coast, with only minor contributions from Tasman Bay and Golden Bay. Most trawl stations capture stargazer, but strata 100–200 m in depth and south of Cape Foulwind contribute most of the total biomass. Throughout the time series most of the biomass has comprised adult fish.

##### East Coast South Island Trawl Survey (STA 3)

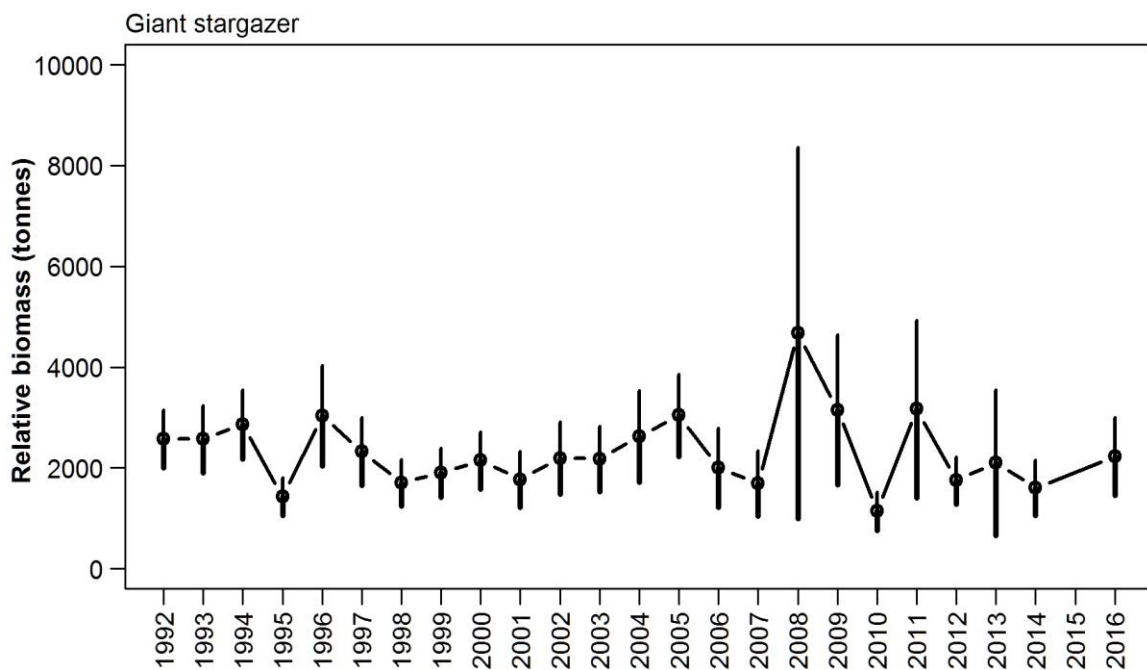
The ECSI winter surveys from 1991 to 1996 in 30–400 m were replaced by summer trawl surveys (1996–97 to 2000–01) which also included the 10–30 m depth range, but these were discontinued after the fifth in the annual time series because of the extreme fluctuations in catchability between

## STARGAZER (STA)

surveys (Francis et al. 2001). The winter surveys were reinstated in 2007 and this time included additional 10–30 m strata in an attempt to index elephant fish and red gurnard which were included in the list of target species. Only the 2007, 2012, 2014 and 2016 surveys provide full coverage of the 10–30 m depth range.

The distribution of giant stargazer hotspots varies between years, but overall this species is consistently well represented over the entire survey area, most commonly from 30 m to about 200 m. There were no giant stargazer caught in the 10–30 m strata of the East Coast South Island trawl survey in 2007, 2012, 2014 and 2016, and hence the addition of the shallow strata (10–30 m) is of no value for monitoring giant stargazer.

Overall there is no consistent trend in giant stargazer biomass in ECSI survey series (Figure 4). Pre-recruited biomass was a small but consistent component of the total biomass estimate on all surveys (range 2–5% of total biomass) and in 2016 it was 4% (Beentjes et al 2016). The juvenile to adult biomass ratio (based on length-at-50% maturity) was relatively constant over the time series at about 1 to 1, and in 2016 biomass was 48% juvenile.



**Figure 2:** Giant stargazer biomass estimated from the Chatham Rise trawl survey. Error bars are  $\pm$  two standard errors.

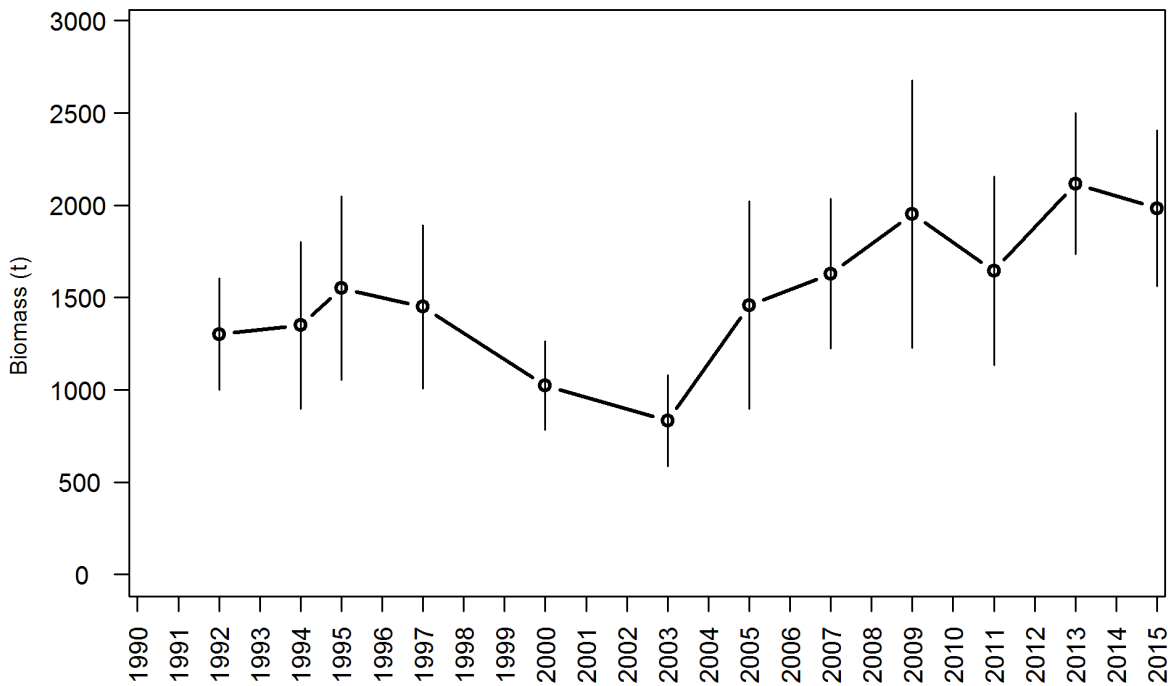


Figure 3: Giant stargazer biomass estimates for the west coast South Island inshore trawl survey time series. Error bars are  $\pm$  two standard errors.

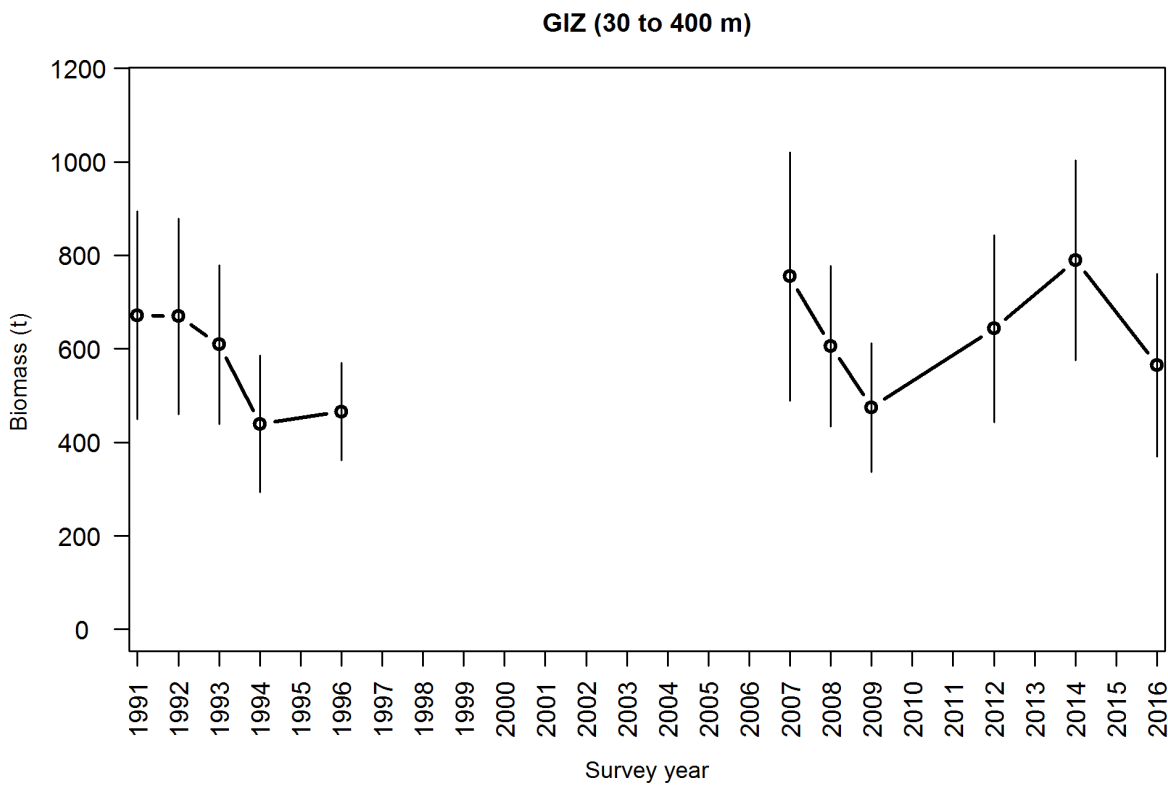


Figure 4: Giant stargazer (GIZ) total biomass for the all ECSI winter surveys in core strata (30–400 m). Error bars are  $\pm$  two standard errors.

**STARGAZER (STA)**

**Table 5: Relative biomass indices (t) and coefficients of variation (CV) for giant stargazer for the east coast North Island (ECNI), east coast South Island (ECSI) - summer and winter, Chatham Rise, west coast South Island (WCSI), and the Stewart-Snares Island survey areas\*. Biomass estimates for ECSI in 1991 have been adjusted to allow for non-sampled strata (7 & 9 equivalent to current strata 13, 16 and 17). The sum of pre-recruit and recruited biomass values do not always match the total biomass for the earlier surveys because at several stations length frequencies were not measured, affecting the biomass calculations for length intervals. – , not measured; NA, not applicable. Recruited is defined as the size-at-recruitment to the fishery (30 cm).**

| Region         | Fishstock | Year | Trip number | Total Biomass estimate | CV (%) | Total Biomass estimate | CV (%) | Pre-recruit | CV (%) | Pre-recruit | CV (%) | Recruited | CV (%) | Recruited | CV (%) |
|----------------|-----------|------|-------------|------------------------|--------|------------------------|--------|-------------|--------|-------------|--------|-----------|--------|-----------|--------|
| ECNI (inshore) | STA 2     | 1993 | KAH9304     | 184                    | 22     | -                      | -      | -           | -      | -           | -      | -         | -      | -         | -      |
|                |           | 1994 | KAH9402     | 58                     | 47     | -                      | -      | -           | -      | -           | -      | -         | -      | -         | -      |
|                |           | 1995 | KAH9502     | 44                     | 35     | -                      | -      | -           | -      | -           | -      | -         | -      | -         | -      |
|                |           | 1996 | KAH9602     | 57                     | 17     | -                      | -      | -           | -      | -           | -      | -         | -      | -         | -      |
| ECNI(scampi)   | STA 2     | 1993 | KAH9301     | 250                    | 16     | -                      | -      | -           | -      | -           | -      | -         | -      | -         | -      |
|                |           | 1994 | KAH9401     | 215                    | 20     | -                      | -      | -           | -      | -           | -      | -         | -      | -         | -      |
|                |           | 1995 | KAH9501     | 122                    | 17     | -                      | -      | -           | -      | -           | -      | -         | -      | -         | -      |
| ECSI (winter)  | STA 3     |      |             | 30-400m                |        | 10-400m                |        | 30-400m     |        | 10-400m     |        | 30-400m   |        | 10-400m   |        |
|                |           | 1991 | KAH9105     | 672                    | 17     | -                      | -      | 26          | 22     | -           | -      | 646       | 17     | -         | -      |
|                |           | 1992 | KAH9205     | 669                    | 16     | -                      | -      | 35          | 14     | -           | -      | 634       | 16     | -         | -      |
|                |           | 1993 | KAH9306     | 609                    | 14     | -                      | -      | 19          | 16     | -           | -      | 591       | 14     | -         | -      |
|                |           | 1994 | KAH9406     | 439                    | 17     | -                      | -      | 10          | 25     | -           | -      | 429       | 17     | -         | -      |
|                |           | 1996 | KAH9606     | 466                    | 11     | -                      | -      | 13          | 34     | -           | -      | 452       | 11     | -         | -      |
|                |           | 2007 | KAH0705     | 755                    | 18     | -                      | -      | 33          | 24     | -           | -      | 722       | 18     | -         | -      |
|                |           | 2008 | KAH0806     | 606                    | 14     | -                      | -      | 13          | 28     | -           | -      | 592       | 14     | -         | -      |
|                |           | 2009 | KAH0905     | 475                    | 14     | -                      | -      | 10          | 34     | -           | -      | 464       | 15     | -         | -      |
|                |           | 2012 | KAH1207     | 643                    | 16     | -                      | -      | 26          | 22     | -           | -      | 617       | 16     | -         | -      |
|                |           | 2014 | KAH1402     | 790                    | 14     | -                      | -      | 39          | 17     | -           | -      | 751       | 14     | -         | -      |
| 2016           | KAH1605   | 565  | 17          | -                      | -      | 22                     | 24     | -           | -      | 543         | 18     | -         | -      |           |        |
| ECSI (summer)  | STA 3     | 1996 | KAH9618     | 897                    | 12     | -                      | -      | -           | -      | -           | -      | -         | -      | -         | -      |
|                |           | 1997 | KAH9704     | 543                    | 11     | -                      | -      | -           | -      | -           | -      | -         | -      | -         | -      |
|                |           | 1998 | KAH9809     | 999                    | 10     | -                      | -      | -           | -      | -           | -      | -         | -      | -         | -      |
|                |           | 1999 | KAH9917     | 472                    | 14     | -                      | -      | -           | -      | -           | -      | -         | -      | -         | -      |
|                |           | 2000 | KAH0014     | 214                    | 16     | -                      | -      | -           | -      | -           | -      | -         | -      | -         | -      |
| Chatham Rise   | STA 4     | 1992 | TAN9106     | 2 570                  | 11     | -                      | -      | -           | -      | -           | -      | -         | -      | -         | -      |
|                |           | 1993 | TAN9212     | 2 560                  | 13     | -                      | -      | -           | -      | -           | -      | -         | -      | -         | -      |
|                |           | 1994 | TAN9401     | 2 853                  | 12     | -                      | -      | -           | -      | -           | -      | -         | -      | -         | -      |
|                |           | 1995 | TAN9501     | 1 429                  | 13     | -                      | -      | -           | -      | -           | -      | -         | -      | -         | -      |
|                |           | 1996 | TAN9601     | 3 039                  | 16     | -                      | -      | -           | -      | -           | -      | -         | -      | -         | -      |
|                |           | 1997 | TAN9701     | 2 328                  | 15     | -                      | -      | -           | -      | -           | -      | -         | -      | -         | -      |
|                |           | 1998 | TAN9801     | 1 702                  | 14     | -                      | -      | -           | -      | -           | -      | -         | -      | -         | -      |
|                |           | 1999 | TAN9901     | 1 903                  | 13     | -                      | -      | -           | -      | -           | -      | -         | -      | -         | -      |
|                |           | 2000 | TAN0001     | 2 148                  | 13     | -                      | -      | -           | -      | -           | -      | -         | -      | -         | -      |
|                |           | 2001 | TAN0101     | 1 772                  | 16     | -                      | -      | -           | -      | -           | -      | -         | -      | -         | -      |

\*Assuming areal availability, vertical availability and vulnerability equal 1.0. Biomass is only estimated outside 10 m depth except for COM9901 and CMP0001. Note: because trawl survey biomass estimates are indices, comparisons between different seasons (e.g., summer and winter ECSI) are not strictly valid.

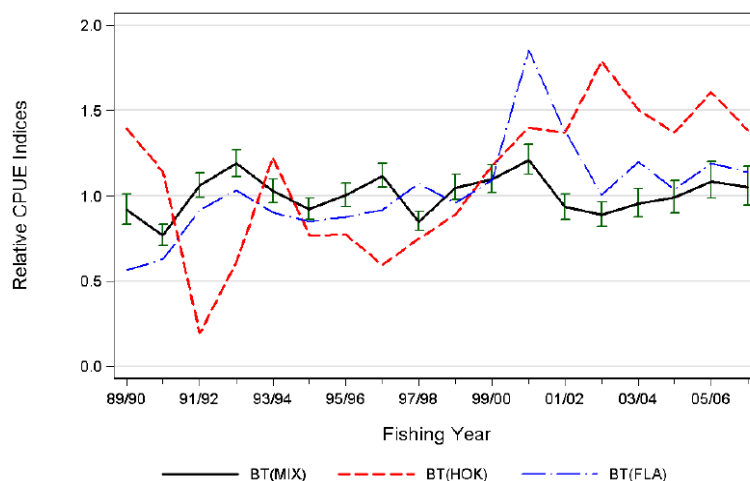
**Table 5 [continued]: Relative biomass indices (t) and coefficients of variation (CV) for giant stargazer for the east coast North Island (ECNI), east coast South Island (ECSI) - summer and winter, Chatham Rise, west coast South Island (WCSI), and the Stewart-Snares Island survey areas\*. Biomass estimates for ECSI in 1991 have been adjusted to allow for non-sampled strata (7 & 9 equivalent to current strata 13, 16 and 17). The sum of pre-recruit and recruited biomass values do not always match the total biomass for the earlier surveys because at several stations length frequencies were not measured, affecting the biomass calculations for length intervals. – , not measured; NA, not applicable. Recruited is defined as the size-at-recruitment to the fishery (30 cm).**

| Region           | Fishstock              | Year | Trip number | Total Biomass estimate | CV (%)  | Total Biomass estimate | CV (%) | Pre-recruit | CV (%) | Recruited | CV (%) |
|------------------|------------------------|------|-------------|------------------------|---------|------------------------|--------|-------------|--------|-----------|--------|
| Chatham Rise     | STA 4                  | 2002 | TAN0201     | 2 195                  | 16      | -                      | -      | -           | -      | -         | -      |
|                  |                        | 2003 | TAN0301     | 1 380                  | 15      | -                      | -      | -           | -      | -         | -      |
|                  |                        | 2005 | TAN0501     | 3 045                  | 13      | -                      | -      | -           | -      | -         | -      |
|                  |                        | 2006 | TAN0601     | 2 007                  | 19      | -                      | -      | -           | -      | -         | -      |
|                  |                        | 2007 | TAN0701     | 1 684                  | 12      | -                      | -      | -           | -      | -         | -      |
|                  |                        | 2008 | TAN0801     | 4 677                  | 40      | -                      | -      | -           | -      | -         | -      |
|                  |                        | 2009 | TAN0901     | 3 154                  | 24      | -                      | -      | -           | -      | -         | -      |
|                  |                        | 2010 | TAN1001     | 1 140                  | 17      | -                      | -      | -           | -      | -         | -      |
|                  |                        | 2011 | TAN1101     | 3 169                  | 28      | -                      | -      | -           | -      | -         | -      |
|                  |                        | 2012 | TAN1201     | 1 751                  | 13      | -                      | -      | -           | -      | -         | -      |
|                  |                        | 2013 | TAN1301     | 2 108                  | 34      | -                      | -      | -           | -      | -         | -      |
|                  |                        | 2014 | TAN1401     | 1 601                  | 17      | -                      | -      | -           | -      | -         | -      |
|                  |                        | 2016 | TAN1601     | 2 228                  | 17      | -                      | -      | -           | -      | -         | -      |
|                  |                        | WCSI | STA 7       | 1992                   | KAH9204 | 1 302                  | 12     | -           | -      | -         | -      |
| 1994             | KAH9404                |      |             | 1 350                  | 17      | -                      | -      | -           | -      | -         | -      |
| 1995             | KAH9504                |      |             | 1 551                  | 16      | -                      | -      | -           | -      | -         | -      |
| 1997             | KAH9701                |      |             | 1 450                  | 15      | -                      | -      | -           | -      | -         | -      |
| 2000             | KAH0004                |      |             | 1 023                  | 12      | -                      | -      | -           | -      | -         | -      |
| 2003             | KAH0304                |      |             | 827                    | 15      | -                      | -      | -           | -      | -         | -      |
| 2005             | KAH0503                |      |             | 1 429                  | 19      | -                      | -      | -           | -      | -         | -      |
| 2007             | KAH0704                |      |             | 1 630                  | 12      | -                      | -      | -           | -      | -         | -      |
| 2009             | KAH0904                |      |             | 1 952                  | 19      | -                      | -      | -           | -      | -         | -      |
| 2011             | KAH1104                |      |             | 1 645                  | 16      | -                      | -      | -           | -      | -         | -      |
| 2013             | KAH1305                |      |             | 2 118                  | 9       | -                      | -      | -           | -      | -         | -      |
| 2015             | KAH1503                |      |             | 1 981                  | 11      | -                      | -      | -           | -      | -         | -      |
| Stewart & Snares | STA 5                  | 1993 | TAN9301     | 2 650                  | 20      | -                      | -      | -           | -      | -         | -      |
|                  |                        | 1994 | TAN9402     | 3 755                  | 11      | -                      | -      | -           | -      | -         | -      |
|                  |                        | 1995 | TAN9502     | 2 452                  | 11      | -                      | -      | -           | -      | -         | -      |
|                  |                        | 1996 | TAN9604     | 1 733                  | 11      | -                      | -      | -           | -      | -         | -      |
| Stewart & Snares | Banded Stargazer BGZ 5 | 1993 | TAN9301     | 409                    | 27      | -                      | -      | -           | -      | -         | -      |
|                  |                        | 1994 | TAN9402     | 250                    | 21      | -                      | -      | -           | -      | -         | -      |
|                  |                        | 1995 | TAN9502     | 316                    | 29      | -                      | -      | -           | -      | -         | -      |
|                  |                        | 1996 | TAN9604     | 232                    | 34      | -                      | -      | -           | -      | -         | -      |

## 4.2 CPUE analysis

### STA 2 and 3

CPUE indices have been calculated for STA 2 (Vignaux 1997) and STA 3 (SEFMC 2002, SeaFIC 2005a, Starr et al 2008). The currently accepted CPUE series for STA 3 (Figure 5) is based on a mixed target species fishery including red cod, barracouta, tarakihi and stargazer and shows no trend from about 2000–01 to the most recent year in 2006–07.



**Figure 5:** Comparison of the lognormal indices from the three bottom trawl CPUE series for STA 3; a) BT(MIX): mixed species target trawl fishery; b) BT(FLA): hoki target trawl fishery; c) BT(FLA): target flatfish trawl fishery. Each series is scaled to the geometric mean = 1. (Starr et al 2008).

### STA 5

About 80% of the STA 5 catch is caught by small (< 43 m) inshore bottom-trawl vessels targeting giant stargazer. The remainder of the catch is caught mostly by large ( $\geq 43$  m), deepwater bottom-trawl vessels targeting other species such as barracouta, jack mackerels, and squids. Catches by methods other than bottom trawling are very small.

Standardised CPUE indices currently represent the only available information for monitoring STA 5 abundance. There have been previous analyses of the CPUE data from this fishery by Vignaux (1997), Phillips (2001) and Manning (2007). In 2014, a new CPUE analysis was conducted that included catch and effort data from the inshore target stargazer trawl fleet operating in Statistical Areas 030, 029 and 025 during 1989–90 to 2012–13.

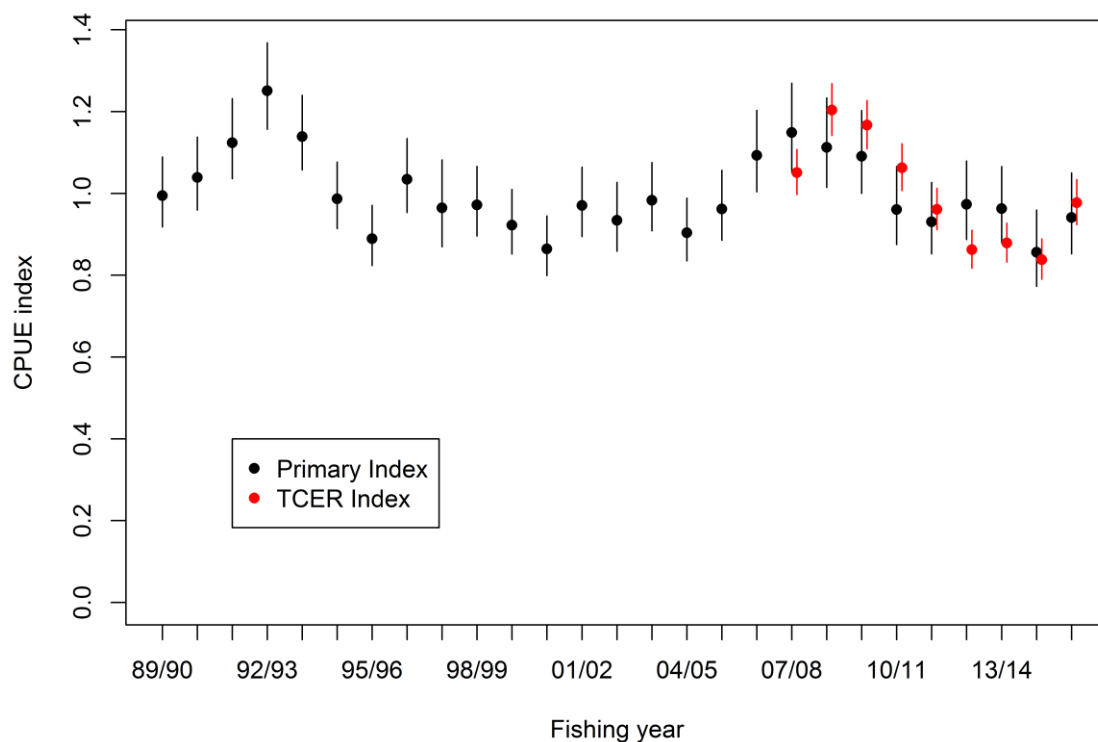
Data processing was similar to the approach of Manning (2007), whereby the declared landed catches were corrected for changes in the conversion factor of giant stargazer during the early 1990s. Landed catches from individual fishing trips were apportioned to the associated fishing effort records in proportion to the reported estimated catch of giant stargazer. An attempt to replicate the analysis of Manning (2007) yielded comparable CPUE indices for the 1989–90 to 2003–04 period.

Changes in statutory reporting in 2007–08 (from CELR to TCER forms) required that the more recent location based TCER trawl effort data be aggregated into a format consistent with the CELR data format to configure a comparable times series. The aggregation procedure is described in detail in Langley (2014). The final CPUE data set was limited to a core set of 14 vessels that accounted for 80% of the total target stargazer catch. One of the main vessels changed fishing gear from single trawl to a twin rig trawl in the mid-2000s and, on that basis, was assigned to a different vessel category depending on the fishing gear deployed.

The final CPUE data set included a trivial number of zero stargazer catches and those records were ignored in the final analysis. A generalised linear model, based on positive catch and effort targeted at stargazer, was formulated using an AIC based step-wise fitting procedure and investigated a number of alternative distributional assumptions. The final model included the natural logarithm of catch as the dependent variable; fishing year, vessel and month as categorical predictor variables; and the effort variables: natural log of the number of trawls and fishing duration, included as third order

polynomial functions. The Weibull error distribution was accepted as the most suitable of those which were investigated (Langley & Bentley 2014).

In 2017, the CPUE model was updated to include three additional years: 2013–14 to 2015–16 (Langley 2017). The updated CPUE indices were virtually identical to the previous CPUE indices for the corresponding period, i.e. 1989–90 to 2012–13. The CPUE indices from the model have fluctuated without trend with peaks in 1991–92 to 1993–94 and 2006–07 to 2009–08 (Figure 6). The 2013–14 to 2015–16 indices are slightly below the average for the series. CPUE indices were also derived from the short time-series of high resolution TCER data from 2007–08 to 2015–16. These indices had a similar trend to the corresponding annual indices from the primary CPUE model (Figure 6).



**Figure 6: A comparison of STA 5 CPUE indices from the base model and indices derived from the high resolution, location based TCER data and the associated 95% confidence intervals.**

### Establishing $B_{MSY}$ compatible reference points

In 2014, the Working Group accepted mean standardized CPUE for the period 1989–9 to 2012–13 as a  $B_{MSY}$ -compatible proxy for STA 5. The Working Group accepted the default Harvest Strategy Standard definitions that the Soft and Hard Limits would be one half and one quarter the target, respectively.

### STA 7

A CPUE series calculated for STA 7 (SeaFIC 2002, 2003b, 2005b, Starr et al 2007), based on a mixed west coast South Island target species (stargazer, barracouta, red cod and tarakihi) fishery, was not accepted by the AMP WG as an indicator of STA 7 abundance. The Inshore and AMP Fishery Assessment Working Groups (FAWG) had concerns over using bycatch fisheries to monitor stargazer abundance in these areas due to possible changes in recording and fishing practices. A characterisation of the STA 7 fishery, including detailed trawl location data, identified a number of areas of higher stargazer abundance along the WCSI and it was speculated that the previous trends in STA 7 CPUE could have been influenced by the extent of fishing in these localised areas (Langley 2015). The SINS WG reaffirmed the previous conclusions regarding the utility of the aggregated (CELR based) CPUE time-series.



## STARGAZER (STA)

An additional time-series of CPUE indices was derived from the detailed trawl location data set. The data set included trawl records from bottom trawl fishing effort targeting barracouta, tarakihi, blue warehou, stargazer or red cod in the WCSI inshore trawl fishery (Langley 2015) from 2007–08 to 2012–13. The standardised CPUE analysis included both positive catch and presence/absence models that incorporated fishing location and fishing depth variables. The resulting Combined indices were relatively stable, increasing slightly (5–8%) over the 6 year period (Table 6). The trawl survey biomass indices were also relatively stable over that period. The SINS WG concluded that the trawl location based CPUE indices have potential to monitor the relative abundance of STA 7; however, the utility of the CPUE indices can only be evaluated once a longer time series of CPUE indices are available for comparison with the relative abundance indices from the WCSI trawl survey.

**Table 6: Annual combined STA 7 trawl location based CPUE indices, including the lower and upper bounds of the confidence intervals.**

| Fishing year | Index | LCI   | UCI   |
|--------------|-------|-------|-------|
| 2007–08      | 0.969 | 0.909 | 1.025 |
| 2008–09      | 0.956 | 0.905 | 1.010 |
| 2009–10      | 1.029 | 0.975 | 1.087 |
| 2010–11      | 0.982 | 0.926 | 1.037 |
| 2011–12      | 1.052 | 0.995 | 1.110 |
| 2012–13      | 1.013 | 0.954 | 1.069 |

### 4.3 Stock Assessment Models

#### STA 7

An age-structured model partitioned by age (0–25 years) and sex was fitted to the WCSI trawl survey relative abundance indices (1992–05), WCSI survey proportions-at-age data (1992–05), and WCSI fishery catch-at-age data (2005 only) (Manning 2008). The stock boundary assumed in the model included the west coast of the South Island, Tasman and Golden Bays, but not eastern Cook Strait (a catch history was compiled for the model stock that excluded eastern Cook Strait). A summary of the model’s annual cycle is given in Table 7. A preliminary model that included data up to the end of the 2005 year was revised and updated with additional data from 2007 West Coast South Island survey relative biomass, survey proportions-at-age, and fishery proportions-at-age data.

**Table 7: The STA 7 model’s annual cycle (Manning 2008). Processes within each time step are listed in the time step in which they occur in particular order (e.g., in time step 3, new recruits enter the model partition first followed by the application of natural and fishing mortality to the partition). *M*, the proportion of natural mortality assumed during each time step. *F*, the nominal amount of fishing mortality assumed during each time step as a proportion of the total catch in the stock area. Age, the proportion of fish growth that occurs during each time step in each model year.**

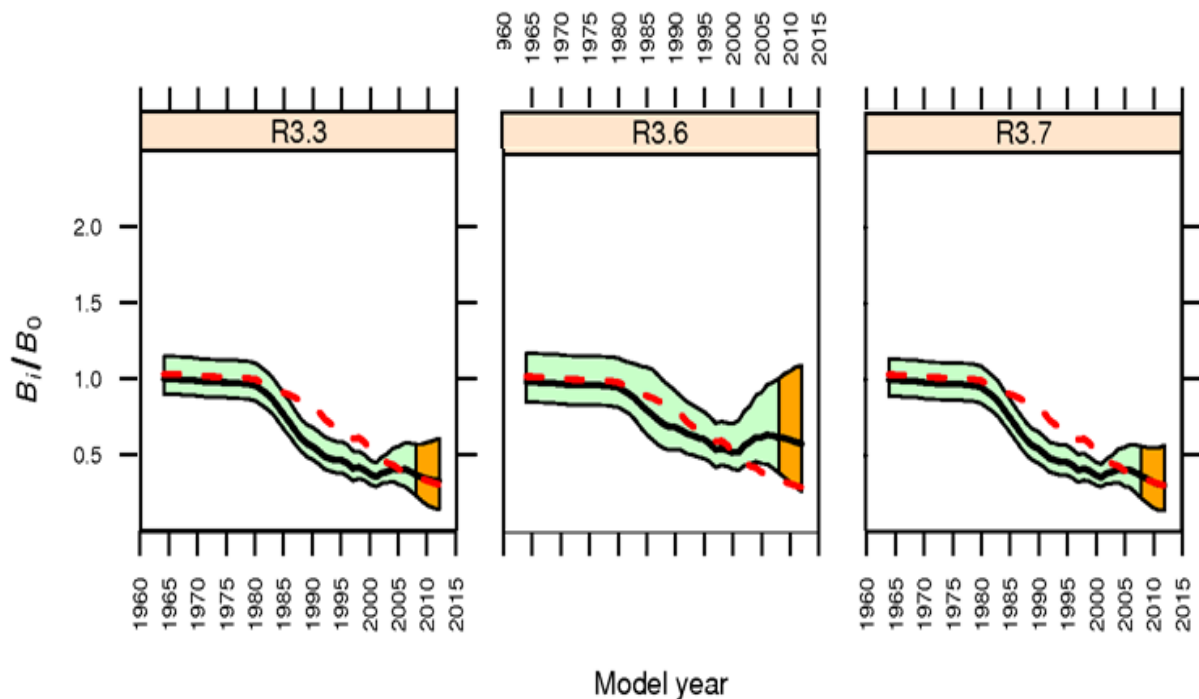
| Time step | Duration               | Process applied                                  | Proportions |          |      | Observations   |
|-----------|------------------------|--|-------------|----------|------|--|
|           |                        |  | <i>M</i>    | <i>F</i> | Age  |  |
| 1         | Oct–Jun                | Mortality ( <i>M</i> , <i>F</i> )                | 0.75        | 0.77     | 1.00 | Survey relative biomass<br>Survey proportions-at-age<br>Survey length-at-age<br>Fishery catch-at-age<br>Fishery relative abundance |
| 2         | Jun<br>(instantaneous) | Spawning<br>Age incrementation                   | 0.00        | 0.00     | 0.00 | NIL  |
| 3         | Jun–Sept               | Recruitment<br>Mortality ( <i>M</i> , <i>F</i> ) | 0.25        | 0.23     | 0.00 | Fishery catch-at-age   |

**Table 8: MCMC initial and current biomass estimates for the STA 7 model runs R3.3, R3.6 and R3.7 (Manning 2008).  $B_0$ , virgin or unfished biomass;  $B_{2007}$ , mid-year biomass in 2007 (current biomass);  $(B_{2007}/B_0)$  %,  $B_0$  as a percentage of  $B_{2007}$ ; Min, minimum; Max, maximum;  $Q_i$ ,  $i$ th quantile. The interval  $(Q_{0.025}, Q_{0.975})$  is a Bayesian credibility interval (a Bayesian analogue of frequentist confidence intervals).**

|             | R3.3   |            |                    | R3.6   |            |                    |
|-------------|--------|------------|--------------------|--------|------------|--------------------|
|             | $B_0$  | $B_{2007}$ | $(B_{2007}/B_0)$ % | $B_0$  | $B_{2007}$ | $(B_{2007}/B_0)$ % |
| Min         | 7 740  | 1 860      | 24.1               | 8 960  | 2 390      | 25.5               |
| $Q_{0.025}$ | 8 290  | 2 410      | 28.5               | 10 170 | 3 680      | 35.9               |
| Median      | 9 210  | 3 580      | 38.8               | 13 750 | 7 490      | 54.2               |
| Mean        | 9 250  | 3 640      | 39.1               | 14 630 | 8 330      | 54.5               |
| $Q_{0.975}$ | 10 580 | 5 290      | 50.7               | 24 910 | 18 580     | 76.3               |
| Max         | 11 800 | 6 350      | 55.0               | 35 920 | 31 310     | 87.4               |

|             | R3.7   |            |                    |
|-------------|--------|------------|--------------------|
|             | $B_0$  | $B_{2007}$ | $(B_{2007}/B_0)$ % |
| Min         | 7 840  | 1 900      | 24.2               |
| $Q_{0.025}$ | 8 220  | 2 370      | 28.8               |
| Median      | 9 190  | 3 580      | 39.0               |
| Mean        | 9 220  | 3 640      | 39.1               |
| $Q_{0.975}$ | 10 470 | 5 260      | 50.1               |
| Max         | 11 300 | 6 120      | 58.2               |



**Figure 7: Relative SSB trajectories (green) and projected status assuming a future constant catch equal to the current catch (orange) calculated from the MCMC runs for model runs 3.3, 3.6, and 3.7 in the quantitative stock assessment of STA 7. The shaded region indicates the 95% credibility region about median SSB (dotted lines) calculated from each model's SSB posterior distribution.**

Monte Carlo Markov Chain estimates for three models (3.3, 3.6, and 3.7) are given in Table 8 and Figure 7. Sensitivities to the base case model (R3.3) assumed domed survey selectivities (R3.6), and down-weighted the 2000 and 2003 survey indices (R3.7). Spawning stock biomass was estimated as 29–51%  $B_0$  for the base case model, and ranged between 29 and 76%  $B_0$  for the two model sensitivities (Table 8).

#### 4.4 Yield estimates and projections

##### Estimation of Maximum Constant Yield (*MCY*)

Table 9: Yield estimates (t) for STA 7.

| Parameter              | 3.3   | 3.6    | Run<br>3.7 |
|------------------------|-------|--------|------------|
| <i>MCY</i>             | 595   | 649    | 600        |
| <i>B<sub>MCY</sub></i> | 6 813 | 11 282 | 6 720      |
| <i>CAY</i>             | 936   | 2 065  | 938        |
| <i>F<sub>CAY</sub></i> | 0.24  | 0.24   | 0.24       |
| <i>MAY</i>             | 854   | 1 124  | 852        |
| <i>B<sub>MAY</sub></i> | 3 205 | 4 348  | 3 209      |

##### Other yield estimates and stock assessment results

For STA 2, long-term yields are of the order of 50–60 t based on the minimum virgin biomass estimated by the model. No other yield estimates are yet available.

#### 4.5 Other factors

The use of a single conversion factor for deepwater and inshore vessels has resulted in about a 5–10% under-estimate pre 1990–91 of the reported greenweight landings. In 1990–91, separate deepwater and inshore conversion factors were introduced.

Stargazer landings have been influenced by changes in fishing patterns and fishing methods in the target species fisheries and indirectly by the abundance of those target species. Landings have also been influenced by changes in reporting behaviour for the different species. Stargazer were also taken historically in substantial quantities by foreign licensed and chartered trawlers fishing offshore grounds for other species (see Table 1). Because stargazer was mainly a bycatch in these early fisheries, there may be under-reporting in these data. Therefore, any estimate of *MCY* based on catch data is likely to be conservative.

## 5. STATUS OF THE STOCKS

No estimates of current and reference biomass are available.

- **STA 1**

The TACC for STA 1 was increased from 21 t to 50 t in the 1991–92 fishing year under the AMP. In 1997, the TACC was reduced to 21 t upon its removal from the programme. Recent catches have exceeded this level. It is not known if recent catch levels and current TACC are sustainable. The status of STA 1 relative to *B<sub>MSY</sub>* is unknown.

- **STA 2**

The TACC for STA 2 was increased from 37 t to 100 t in the 1991–92 fishing year under the AMP. Landings in the early 1990s peaked in the range of 105–125 t, but have subsequently declined.

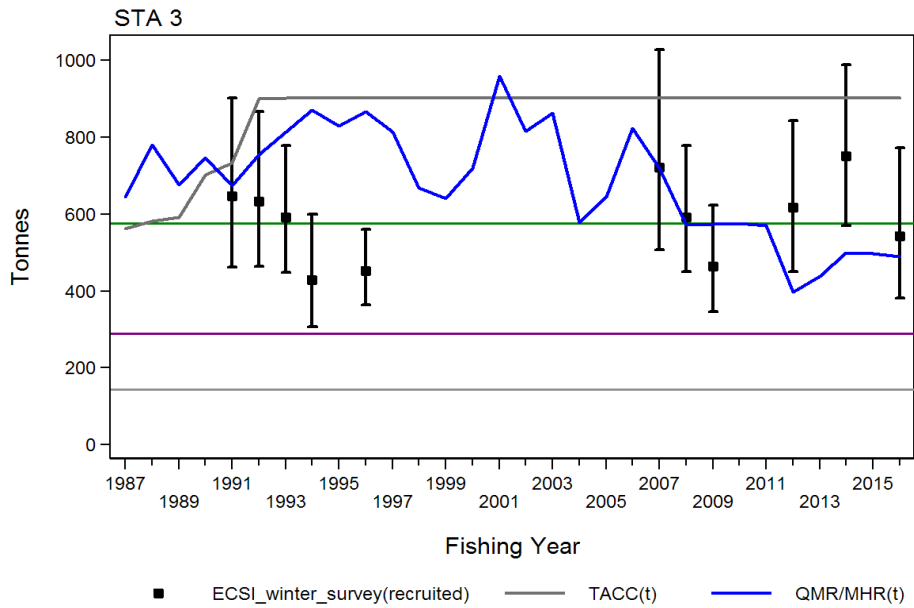
The TACC was reduced to 38 t in the 1997–98 fishing year, upon the removal of STA 2 from the AMP. Landings have been below the TACC since 2003–04. It is not known whether recent catches and the current TACC will cause the STA 2 stock size to decline. The status of STA 2 relative to *B<sub>MSY</sub>* is unknown.

- **STA 3**

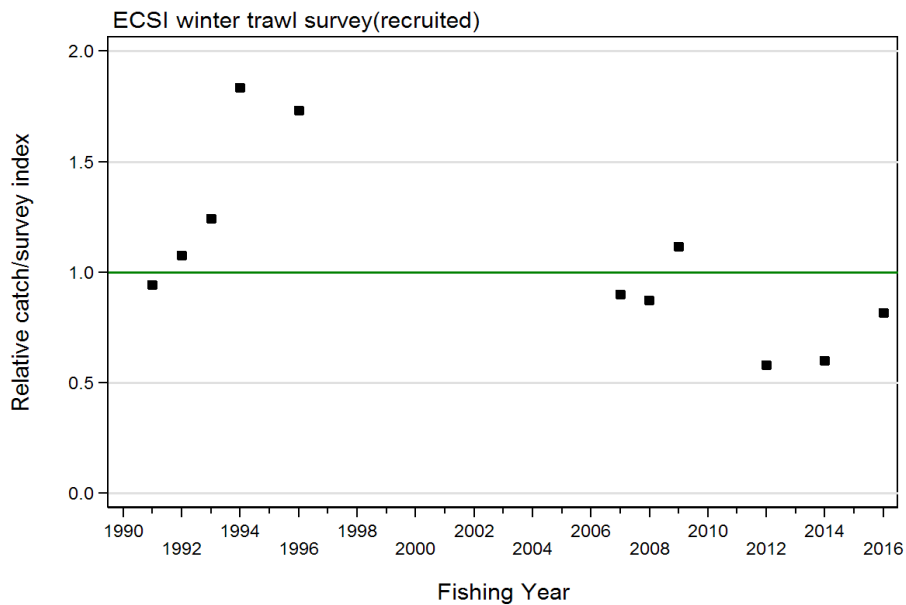
| Stock Status                   |   |
|--------------------------------|---|
| Year of Most Recent Assessment | 2017  |
| Assessment Runs Presented      | The series of biomass indices from the East Coast South Island trawl survey |
| Reference Points               | Target: <i>B<sub>MSY</sub></i> -compatible proxy based on mean biomass      |

|                                   |   |
|-----------------------------------|---|
|                                   | from the East Coast South Island trawl survey for the period 1991 to 2016<br>Soft Limit: 50% of target<br>Hard Limit: 25% of target<br>Overfishing Threshold: Mean relative exploitation rate for the period 1991 to 2016 |
| Status in relation to Target      | About as Likely as Not (40–60%) to be at or above the target  |
| Status in relation to Limits      | Unlikely (< 40%) to be below both soft and hard limits  |
| Status in relation to Overfishing | Unlikely (< 10%) to be overfishing  |

**Historical Stock Status Trajectory and Current Status**



Comparison of the GIZ WCSI recruited trawl survey indices with the QMR/MHR landings and TACC for STA 3. The agreed  $B_{MSY}$  proxy (geometric average: 1991–2016 ECSI winter survey biomass estimates=577 t) is shown as a green line; the calculated Soft Limit (=50%  $B_{MSY}$  proxy) is shown as a purple line; the calculated Hard Limit (=25%  $B_{MSY}$  proxy) is shown as a grey line.



Relative fishing pressure for STA 3 based on the ratio of QMR/MHR landings relative to the ECSI recruited winter trawl survey which has been normalised so that its geometric mean=1.0. Horizontal green line is the geometric mean fishing pressure from 1991 to 2016.

**STARGAZER (STA)**

| <b>Fishery and Stock Trends</b>                  |  |
|--|--|
| Recent Trend in Biomass or Proxy                 | Biomass appears to be fluctuating around the long-term mean, with the 2016 ECSI survey estimate close to the long-term mean.                                 |
| Recent Trend in Fishing Intensity or Proxy       | Fishing mortality has been declining since 2007, at the same time that catches have been in decline.   |
| Other Abundance Indices                          | A standardised CPUE series from 1989–90 to 2006–07 shows no trend, suggesting that there was little change during the period when no surveys were conducted. |
| Trends in Other Relevant Indicators or Variables | -  |

| <b>Projections and Prognosis</b>  |   |
|---|---|
| Stock Projections or Prognosis  | STA 3 remains primarily a bycatch in the mixed-species inshore trawl fishery. STA 3 stock size is Likely (> 60%) to remain near current levels at current catch levels (2007–08 to 2015–16). It is Unknown if catches near the TACC would cause the stock to decline. |
| Probability of Current Catch or TACC causing Biomass to remain below or to decline below Limits | Current catch:<br>Soft Limit: Unlikely (< 40%)<br>Hard Limit: Unlikely (< 40%)<br>TACC: Unknown   |
| Probability of Current Catch or TACC causing overfishing to continue or to commence             | Current Catch: Unlikely (< 40%)TACC: Unknown  |

| <b>Assessment Methodology and Evaluation</b> |   |                       |
|--|---|-----------------------|
| Assessment Type                              | Level 2 - Partial Quantitative Stock Assessment   |                       |
| Assessment Method                            | Trawl survey biomass and standardised CPUE based on lognormal error distribution and positive catches |                       |
| Assessment Dates                             | Latest assessment: 2017   | Next assessment: 2019 |
| Overall assessment quality (rank)            | 1 – High Quality  |                       |
| Main data inputs (rank)                      | -ECSI trawl survey series   | 1 – High Quality      |
| Data not used (rank)                         | N/A   |                       |
| Changes to Model Structure and Assumptions   | -   |                       |
| Major Sources of Uncertainty                 |   |                       |

| <b>Qualifying Comments</b> |
|----------------------------|
| -                          |

| <b>Fishery Interactions</b>   |
|---|
| STA 3 are caught in fisheries for flatfish, barracouta, hoki, red cod and tarakihi. Target STA only accounted for about 4% of total landings from 1989–90 to 2007–08. Incidental captures of seabirds occur, and there is a risk of incidental capture of Hector's dolphins, other dolphins and New Zealand fur seals. There is a risk of incidental capture of sea lions from Otago Peninsula south. |

• **STA 4**

Stargazer in this Fishstock occur mainly on the Chatham Rise on the shelf around the Chatham Islands, but are sparsely distributed over the rest of the Rise. In most of this Fishstock they may not be economic to target. However, if fishing is overly concentrated in those areas where stargazer can be targeted, such as close to the Chatham Islands, there are concerns that local depletion may occur.

The 2011 estimate of biomass from the Chatham Rise trawl survey was above the long-term mean

(1991–2011). The original TACC of 2014 t for STA 4 was based on a yield estimate from a single trawl survey in 1983. This method is now considered obsolete. The TACC was increased in 2000–01 to 2158 t. Catches have always been substantially less than the TACC. The average catch since the TACC increase has been 300 t. It is not known if catches at the level of the current TACC would be sustainable.

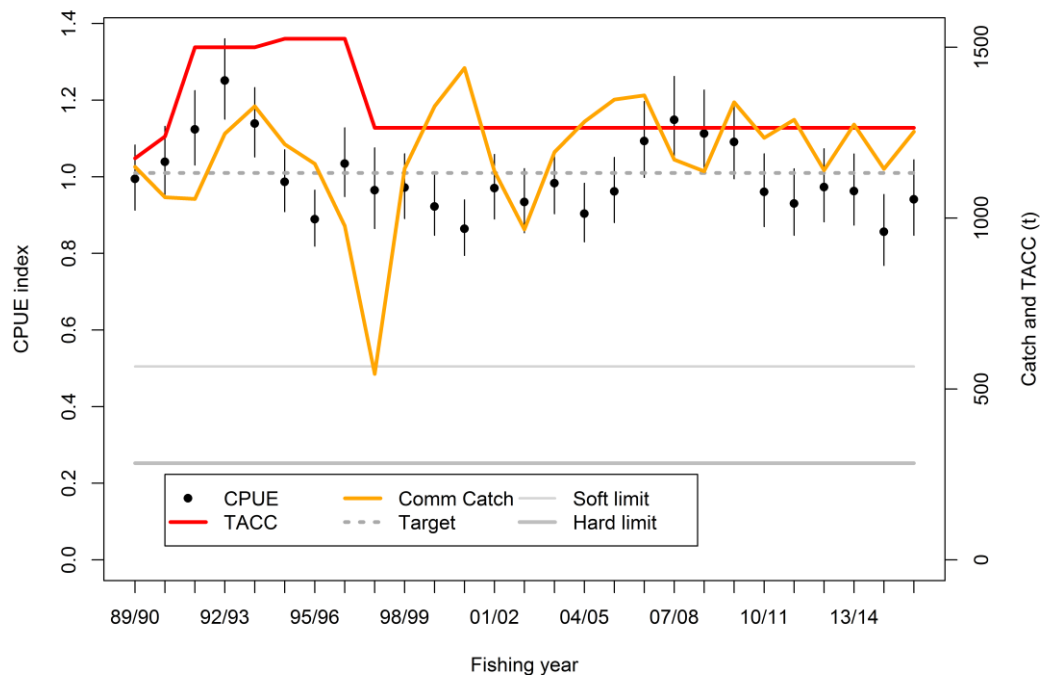
• **STA 5**

**Stock Structure Assumptions**

For the purpose of this summary STA 5 is considered to be a single stock.

| <b>Stock Status</b>               |  |
|-----------------------------------|--|
| Year of Most Recent Assessment    | 2017   |
| Assessment Runs Presented         | Standardised CPUE based on bottom trawl positive catches and effort targeting STA 5  |
| Reference Points                  | Target: $B_{MSY}$ -compatible proxy based on mean CPUE for the period 1989–90 to 2012–13<br>Soft Limit: 50% of target<br>Hard Limit: 25% of target<br>Overfishing threshold: Mean relative exploitation rate for the period 1989–90 to 2012–13 |
| Status in relation to Target      | About As Likely As Not (40–60%) to be at or above the target   |
| Status in relation to Limits      | Soft Limit: Unlikely (< 40%) to be below<br>Hard Limit: Very Unlikely (< 10%) to be below  |
| Status in relation to Overfishing | Overfishing is About as Likely as Not (40–60%) to be Occurring   |

**Historical Stock Status Trajectory and Current Status**

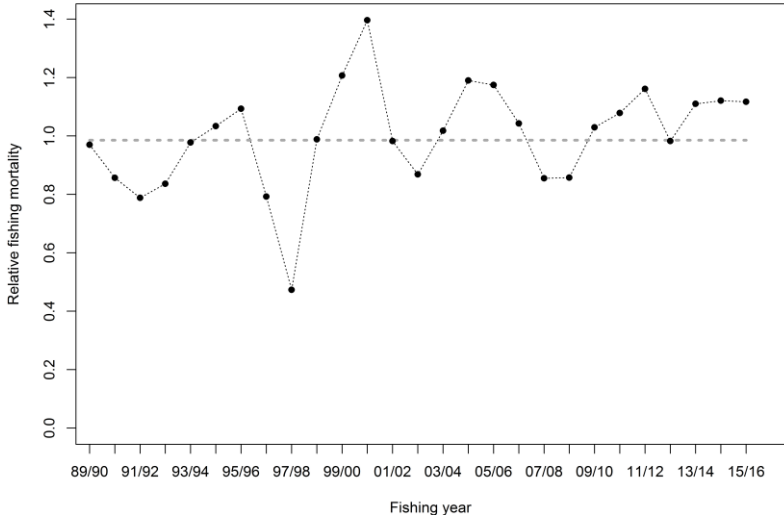


A comparison of the CPUE indices and the annual catch and TACC. The horizontal grey line represents the average of the CPUE indices from 1989–90 to 2012–13 (target reference point).

**Fishery and Stock Trends**

|                                  |  |
|----------------------------------|--|
| Recent Trend in Biomass or Proxy | CPUE has fluctuated without trend (1989–90 to 2012–13) with peaks in 1991–92 to 1993–94 and 2006–07 to 2009–08. The 2015–16 value is at 94% of the target reference level. |
|----------------------------------|--|

**STARGAZER (STA)**

|   |   |
|---|---|
| <p>Recent Trend in Fishing Intensity or Proxy</p>       |  <p>Fishing mortality proxy is Standardised Fishing Effort = Total catch/CPUE (normalised). The dashed line represents the average of the series from 1989–90 to 2012–13 (corresponding to the target reference point). Fishing mortality has fluctuated about the long term average and recent levels of fishing mortality were slightly higher than the target level.</p> |
| <p>Other Abundance Indices</p>                          | <p>-</p>  |
| <p>Trends in Other Relevant Indicators or Variables</p> | <p>-</p>  |

|  |   |
|--|---|
| <p><b>Projections and Prognosis</b></p>  |   |
| <p>Stock Projections or Prognosis</p>  | <p>Catches have been maintained near the current level for the last 28 years and there has been no indication of a decline in CPUE over that period, indicating that the current level of catch is probably sustainable, at least in the 3–5 year period.</p> |
| <p>Probability of Current Catch or TACC causing Biomass to remain below or to decline below Limits</p> | <p>Soft Limit: Unlikely (&lt; 40%) for both catch and TACC<br/>Hard Limit: Very Unlikely (&lt; 10%) for both catch and TACC</p>   |
| <p>Probability of Current Catch or TACC causing Overfishing to continue or to commence</p>             | <p>Current Catch: About as Likely as Not (40–60%)<br/>TACC: About as Likely as Not (40–60%)</p>   |

|   |  |
|---|--|
| <p><b>Assessment Methodology and Evaluation</b></p> |  |
| <p>Assessment Type</p>                              | <p>Level 2 - Partial Quantitative Stock Assessment</p>       |
| <p>Assessment Method</p>                            | <p>Standardised CPUE indices</p>                             |
| <p>Assessment Dates</p>                             | <p>Latest assessment: 2017      Next assessment: Unknown</p> |
| <p>Overall assessment quality rank</p>              | <p>1 – High Quality</p>                                      |
| <p>Main data inputs (rank)</p>                      | <p>- Catch and effort data      1 – High Quality</p>         |
| <p>Data not used (rank)</p>                         | <p>N/A</p>   |
| <p>Changes to Model Structure and Assumptions</p>   | <p>No change from previous (2014) assessment</p>             |

|                                   |
|-----------------------------------|
| <p><b>Qualifying Comments</b></p> |
|-----------------------------------|

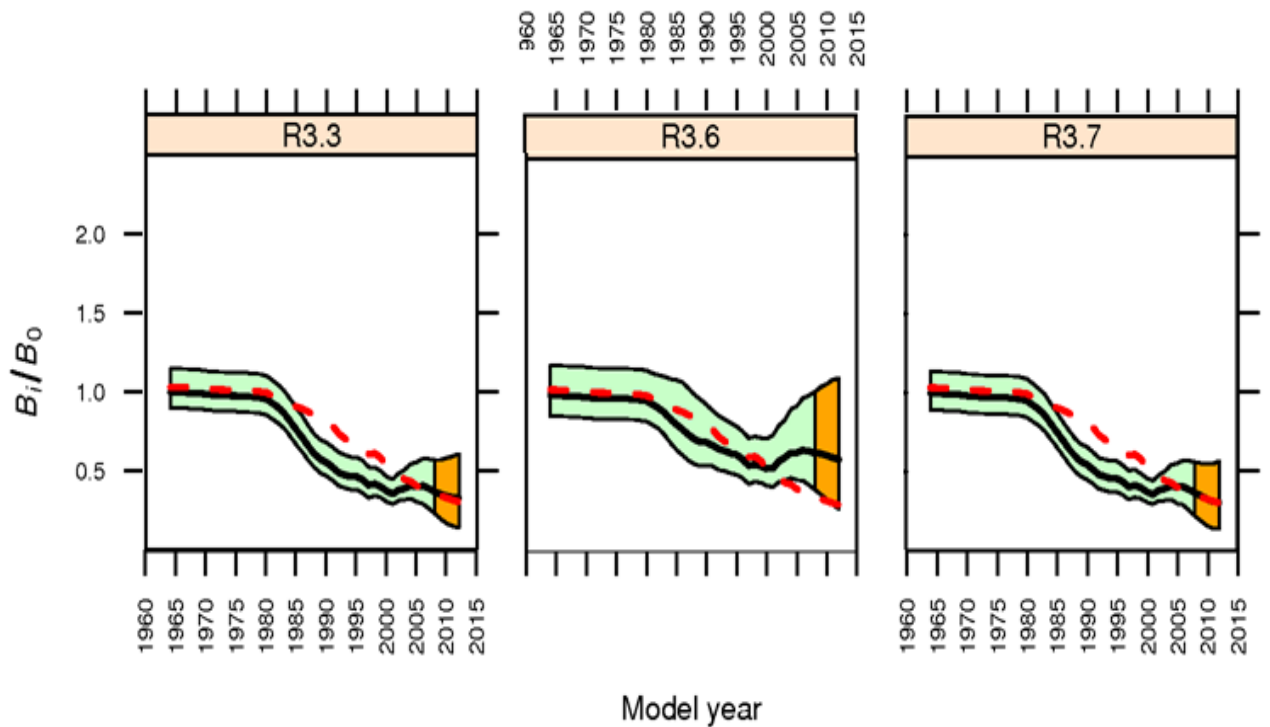
|   |
|---|
| <p><b>Fishery Interactions</b></p> <p>Most (70–80%) of the STA 5 catch is taken by the target trawl fishery with a smaller component of the catch taken by a flatfish trawl fishery. The species composition of the landed catch from the target fishery is dominated by stargazer with a small associated catch of ling, tarakihi and spiny dogfish.</p> <p>Vessels participating in the target fishery may also conduct trawls in shallower water with associated catches of flatfish, red gurnard and elephant fish.</p> |
|---|



• STA 7

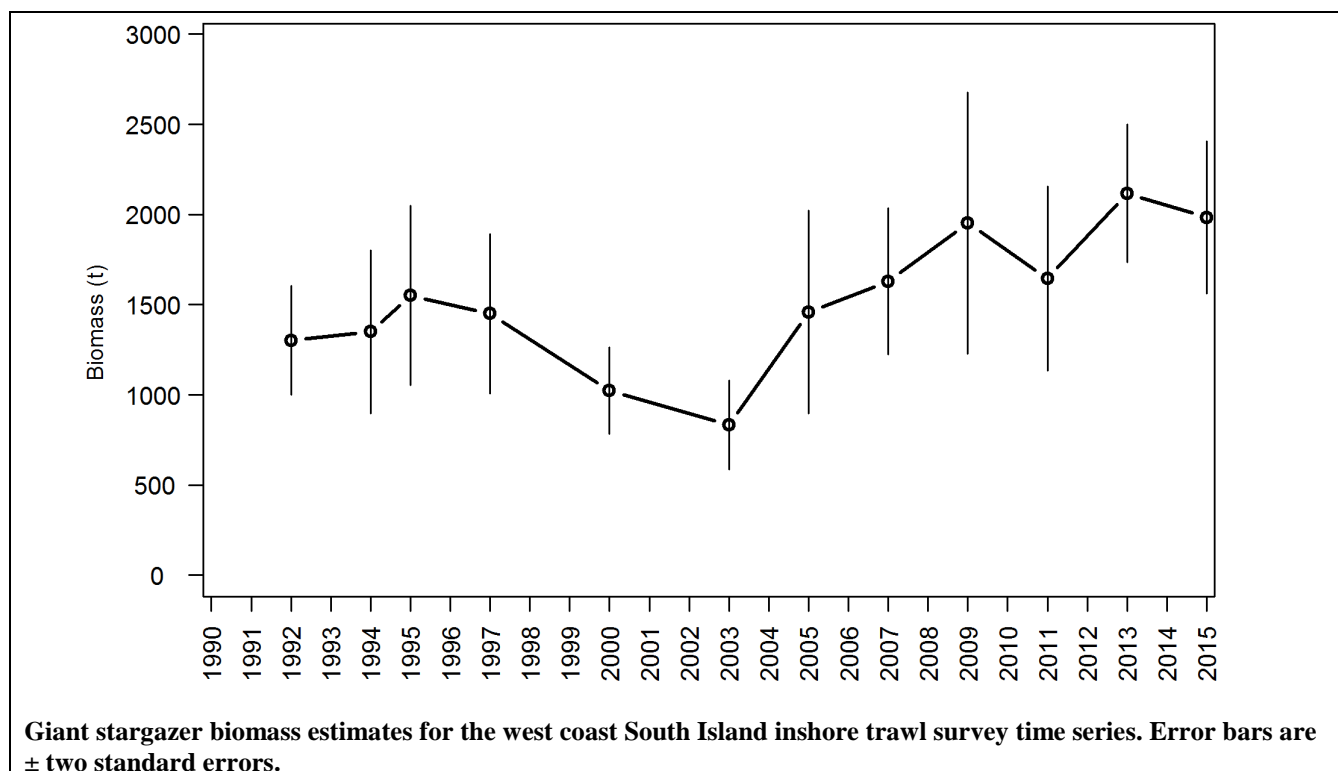
| Stock Status                      |   |
|-----------------------------------|---|
| Year of Most Recent Assessment    | 2008 - Stock assessment<br>2014 - Analysis of survey indices of abundance   |
| Assessment Runs Presented         | Run 3.3 (base case), 3.6 (domed selectivity) and 3.7 (down weight 2000 and 2003 survey data points)   |
| Reference Points                  | Target: Not established but $B_{MSY}$ assumed<br>Soft Limit: 20% $B_0$<br>Hard Limit: 10% $B_0$<br>Overfishing threshold: Not established but $F_{MSY}$ assumed   |
| Status in relation to Target      | Likely (> 60%) to be at or above $B_{MSY}$<br>The base case model for the STA 7 stock assessment suggested biomass in 2007 was 29–51% $B_0$ . Relative biomass of STA 7 from the 2013 WCSI trawl survey is markedly higher than it was in 2007. |
| Status in relation to Limits      | Soft Limit: Very Unlikely (< 10%) to be below<br>Hard limit: Very Unlikely (< 10%) to be below  |
| Status in relation to Overfishing | Unlikely (< 40%) to be occurring  |

**Historical Stock Status Trajectory and Current Status**



Relative SSB trajectories (green) and projected status assuming a future constant catch equal to the current catch (orange) calculated from the MCMC runs for model runs 3.3, 3.6, and 3.7 in the quantitative stock assessment of STA 7. The shaded region indicates the 95% credibility region about median SSB (dotted lines) calculated from each model's SSB posterior distribution.

**STARGAZER (STA)**



| <b>Fishery and Stock Trends</b>                  |  |
|--|--|
| Recent Trend in Biomass or Proxy                 | The WCSI trawl survey indices have increased from a low observed in 2003 to the highest in the series in 2013. |
| Recent Trend in Fishing Intensity or Proxy       | Overfishing is Unlikely (< 40%) to be occurring  |
| Other Abundance Indices                          | CPUE indices from the WCSI mixed trawl fishery derived from individual trawl data (from 2007–08).              |
| Trends in Other Relevant Indicators or Variables | CPUE indices are relatively stable for 2007–08 to 2012–13.   |

| <b>Assessment Methodology</b>     |   |   |
|-----------------------------------|---|---|
| Assessment Type                   | Level 1 - Full Quantitative Stock Assessment<br>Level 2 - Agreed biomass index (WCSI trawl survey)  |   |
| Assessment Method                 | Bayesian statistical stock assessment model implemented in CASAL<br>Evaluation of recent trawl survey indices (up to 2009)  |   |
| Assessment Dates                  | Latest assessment: 2008 (assessment); 2013 (survey)   | Next assessment: Unknown  |
| Overall assessment quality (rank) | 1 – High Quality  |   |
| Main data inputs (rank)           | <ul style="list-style-type: none"> <li>- An age-structured model partitioned by age (0–25 years) and sex was fitted to the WCSI trawl survey relative abundance indices (1992–05), WCSI survey proportions-at-age data (1992–05), and WCSI fishery catch-at-age data (2005 only)</li> <li>- Commercial catch, trawl survey biomass and proportions-at-age estimates, and commercial catch proportions-at-age</li> </ul> | <p>1 – High Quality: The Southern Inshore Working Group accepted the assessment as a credible means to assess stock status relative to <math>B_{MSY}</math></p> <p>1 – High Quality: The Southern Inshore Working Group accepted the West Coast South Island trawl survey as a credible measure of relative biomass</p> |

|  |     |   |
|--|-----|---|
| Data not used (rank)                       | N/A | - |
| Changes to Model Structure and Assumptions | -   |   |
| Major Sources of Uncertainty               | -   |   |

|   |  |
|---|--|
| <b>Projections and Prognosis</b>                                  |  |
| Stock Projections or Prognosis                                    | STA 7 stock is Likely (> 60%) to remain at or above $B_{MSY}$ at current catch levels. |
| Probability of Current Catch or TACC causing decline below Limits | Soft Limit: Very Unlikely (< 10%)<br>Hard Limit: Very Unlikely (< 10%)                 |

|  |
|--|
| <b>Fishery Interactions</b>  |
| Smooth skates are caught as a bycatch in this fishery, and the biomass index for smooth skates in the west coast trawl survey has declined substantially since 1997. There may be similar concerns for rough skates but the evidence is less conclusive. Incidental captures of seabirds occur, there is a risk of incidental capture of dolphins and New Zealand fur seals. |

- **STA 8**

The TACC for STA 8 increased from 22 t to 50 t in the 1993–94 fishing year under the AMP. Landings increased to 18 t in 1991–92 but have since declined to less than 5 t. The TACC was reduced back to 22 t in 1997, upon the removal of STA 8 from the programme. It is not known if recent catch levels and current TACC are sustainable. The status of STA 8 relative to  $B_{MSY}$  is unknown.

## 7. FOR FURTHER INFORMATION

- Anderson O F; Bagley, N W; Hurst, J; Francis, M P; Clark, M R; McMillan, P J (1998) Atlas of New Zealand fish and squid distributions from research bottom trawls. *NIWA Technical Report 42*. 303 p.
- Andrews, A H (2009) Feasibility of lead-radium dating giant stargazer (*Kathetostoma giganteum*). Final Research Report for Ministry of Fisheries Project STA2004-03, 6 p. (Unpublished report held by MPI).
- Bagley, N W; Hurst, R J (1995) Trawl survey of middle depth and inshore bottom species off Southland, February-March 1994 (TAN9402). *New Zealand Fisheries Data Report 57*. 50 p.
- Bagley, N W; Hurst, R J (1996a) Trawl survey of middle depth and inshore bottom species off Southland, February-March 1995 (TAN9502). *New Zealand Fisheries Data Report 73*. 47 p.
- Bagley, N W; Hurst, R J (1996b) Trawl survey of middle depth and inshore bottom species off Southland, February-March 1996 (TAN9604). *New Zealand Fisheries Data Report 77*. 51 p.
- Beentjes, M.P.; MacGibbon, D.; Parkinson, D. (2016). Inshore trawl survey of Canterbury Bight and Pegasus Bay, April–June 2016 (KAH1605). *New Zealand Fisheries Assessment Report 2016/61*. 135 p. Boyd, R O; Reilly, J L (2005) 1999/2000 national marine recreational fishing survey: harvest estimates. Draft New Zealand Fisheries Assessment Report held by MPI Wellington.
- Bradford, E (1998) Harvest estimates from the 1996 national marine recreational fishing surveys. New Zealand Fisheries Assessment Research Document 1998/16. 27p. (Unpublished report held in NIWA library, Wellington).
- Drummond, K L; Stevenson, M L (1995a) Inshore trawl survey of the west coast South Island and Tasman and Golden Bays, March-April 1992 (KAH9204). *New Zealand Fisheries Data Report 63*. 58 p.
- Drummond, K L; Stevenson, M L (1995b) Inshore trawl survey of the west coast South Island and Tasman and Golden Bays, March-April 1994 (KAH9404). *New Zealand Fisheries Data Report 64*. 55 p.
- Drummond, K L; Stevenson, M L (1996) Inshore trawl survey of the west coast South Island and Tasman and Golden Bays, March-April 1995 (KAH9504). *New Zealand Fisheries Data Report 74*. 60 p.
- Francis, M P; Paul, L J (2013) New Zealand inshore finfish and shellfish commercial landings, 1931–82. *New Zealand Fisheries Assessment Report 2013/55*. 136 p.
- Hoenig, J M (1983) Empirical use of longevity data to estimate mortality rates. *Fishery Bulletin 81*: 898–903.
- Hurst, R J; Bagley, N W (1987) Results of a trawl survey of barracouta and associated finfish near the Chatham Islands, New Zealand, December 1984. *New Zealand Fisheries Technical Report No. 3*. 44 p.
- Hurst, R J; Bagley, N W (1994) Trawl survey of middle depth and inshore bottom species off Southland, February-March 1993 (TAN9301). *New Zealand Fisheries Data Report 52*. 58 p.
- Hurst, R J; Bagley, N W (1997) Trends in Southland trawl surveys of inshore and middle depth species, 1993–96. *New Zealand Fisheries Technical Report 50*. 66 p.
- Hurst, R J; Bagley, N W; Uozumi, Y (1990) New Zealand-Japan trawl survey of shelf and upper slope species off southern New Zealand, June 1986. *New Zealand Fisheries Technical Report No. 18*. 50 p.
- Hurst, R J; Fenaughty, J M (1986) Report on biomass surveys 1980–84; summaries and additional information. Fisheries Research Division Internal Report No. 21.
- Langley, A D (2002) The analysis of STA 3 catch and effort data from the RCO 3 target trawl fishery, 1989–90 to 2000–01. Draft New Zealand Fisheries Assessment Report.
- Langley, A D (2015). Fishery characterisation and Catch-Per-Unit-Effort indices for giant stargazer in STA 7. *New Zealand Fisheries Assessment Report 2015/33*.

## STARGAZER (STA)

- Langley, A D; Bentley, N (2014) Fishery characterisation and Catch-Per-Unit-Effort indices for giant stargazer in STA 5. *New Zealand Fisheries Assessment Report 2014/64*. 45 p.
- Langley, A D. (2017) STA 5 fishery characterisation and Catch-Per-Unit-Effort analysis. Unpublished report presented to the Southern Inshore Fishery Assessment Working Group on 14 March 2017 as document SINS-WG-2017-12. (Unpublished report available from Ministry for Primary Industries, Wellington).
- Lydon, G J; Middleton, D A J; Starr, P J (2006) Performance of the STA 3 Logbook Programmes. AMP-WG-06/21. (Unpublished manuscript available from the NZ Seafood Industry Council, Wellington).
- MacGibbon, D J; Stevenson, M L (2013) Inshore trawl survey of the west coast South Island and Tasman and Golden Bays, March-April 2013 (KAH1305). *New Zealand Fisheries Assessment Report 2013/66*. 115 p.
- Manning, M J (2005) On fitting and comparing selected statistical models of fish growth. Unpublished MSc thesis, University of Auckland, Auckland, New Zealand. 162 p.
- Manning, M J (2007) Relative abundance of giant stargazer (*Kathetostoma giganteum*) in STA 5 based on commercial catch-per-unit-effort data. *New Zealand Fisheries Assessment Report 2007/14*. 42 p.
- Manning, M J (2008) The first quantitative stock assessment of giant stargazer (*Kathetostoma giganteum*) in STA 7. *New Zealand Fisheries Assessment Report 2008/33*. 82 p.
- Manning, M J; Sutton, C P (2004) Age and growth of giant stargazer, *Kathetostoma giganteum*, from the West Coast of the South Island (STA 7). *New Zealand Fisheries Assessment Report 2004/17*. 60 p.
- Manning, M J; Sutton, C P (2007) Further study on the age and growth of giant stargazer, *Kathetostoma giganteum*, from the west coast of the South Island (STA 7). *New Zealand Fisheries Assessment Report 2007/12*. 68 p.
- Manning, M J; Sutton, C P (2007) The composition of the commercial and research stargazer (*Kathetostoma giganteum*) catch off the west coast of the South Island (STA 7) during the 2004–05 fishing year. *New Zealand Fisheries Assessment Report 2007/36*. 43 p.
- Phillips, N L (2001) Descriptive and CPUE analysis of catch and effort data for the giant stargazer (*Kathetostoma giganteum*) in the STA 5 fishery from the 1989–90 to the 1999–00 fishing year. Draft New Zealand Fisheries Assessment Report.
- Seafood Industry Council (SeaFIC) (2002) Performance of the STA 7 Adaptive Management Programme. Unpublished report presented to the Adaptive Management Programme Fishery Assessment Working Group on 4 March 2002. p. (Unpublished report available from Ministry for Primary Industries, Wellington).
- Seafood Industry Council (SeaFIC) (2003a) Performance of the STA 3 Adaptive Management Programme. Unpublished report presented to the Adaptive Management Programme Fishery Assessment Working Group as document AMP-WG-2003/02. 43 p. (Unpublished report available from Ministry for Primary Industries, Wellington).
- Seafood Industry Council (SeaFIC) (2003b) Performance of the STA 7 Adaptive Management Programme. Unpublished report presented to the Adaptive Management Programme Fishery Assessment Working Group as document AMP-WG-2003/14. 42 p. (Unpublished report available from Ministry for Primary Industries, Wellington).
- Seafood Industry Council (SeaFIC) (2005a) Performance of the STA 3 Adaptive Management Programme. Unpublished report presented to the Adaptive Management Programme Fishery Assessment Working Group as document AMP-WG-2005/19. p. (Unpublished report available from Ministry for Primary Industries, Wellington).
- Seafood Industry Council (SeaFIC) (2005b) Performance of the STA 7 Adaptive Management Programme. Unpublished report presented to the Adaptive Management Programme Fishery Assessment Working Group as document AMP-WG-2005/09. p. (Unpublished report available from Ministry for Primary Industries, Wellington).
- SEFMC (2002) 2002 report to the Adaptive Management Programme Fishery Assessment Working Group: review of the STA 3 Adaptive Management Programme. Unpublished report presented to the Adaptive Management Programme Fishery Assessment Working Group on 1 March 2002. p. (Unpublished report available from for Primary Industries, Wellington).
- Starr, P J; Kendrick, T H; Lydon, G J; Bentley, N (2007a) Report to the Adaptive Management Programme Fishery Assessment Working Group: STA 3 Adaptive Management Programme. AMP-WG-07/27. (Unpublished manuscript available from the NZ Seafood Industry Council, Wellington). 6 p.
- Starr, P J; Kendrick, T H; Lydon, G J; Bentley, N (2007b) Report to the Adaptive Management Programme Fishery Assessment Working Group: Full-term review of the STA 7 Adaptive Management Programme. AMP-WG-07/14. (Unpublished manuscript available from the NZ Seafood Industry Council, Wellington). 65 p.
- Starr, P J; Kendrick, T H; Lydon, G J; Bentley, N (2008) Report to the Adaptive Management Programme Fishery Assessment Working Group: Full-term review of the STA 3 Adaptive Management Programme. AMP-WG-08/07-rev.2 (Unpublished manuscript available from the NZ Seafood Industry Council, Wellington). 102 p.
- Stevens, D W; O'Driscoll, R L; Dunn, M R; Ballara, S L; Horn, P L (2012) Trawl survey of hoki and middle depth species on the Chatham Rise, January 2011 (TAN1101). *New Zealand Fisheries Assessment Report 2012/10*. 98 p.
- Stevens, D W; O'Driscoll, R L; Oeffner, J; Ballara, S L; Horn, P L (2014) Trawl survey of hoki and middle depth species on the Chatham Rise, January 2013 (TAN1301). *New Zealand Fisheries Assessment Report 2014/02*. 110 p.
- Stevens, D W; O'Driscoll, R L; Ladroit, Y; Ballara, S L; MacGibbon, D J; Horn, P L (2015) Trawl survey of hoki and middle depth species on the Chatham Rise, January 2014 (TAN1401). *New Zealand Fisheries Assessment Report 2015/19*. 119 p.
- Stevens, D W; O'Driscoll, R L; Ballara, S L; Ladroit, Y (2017) Trawl survey of hoki and middle-depth species on the Chatham Rise, January 2016 (TAN1601). *New Zealand Fisheries Assessment Report 2017/08*. 131 p.
- Stevenson, M L (1998) Inshore trawl survey of the west coast South Island and Tasman and Golden Bays, March-April 1997 (KAH9701). *NIWA Technical Report 12*. 70 p.
- Stevenson, M L (2002) Inshore trawl survey of the west coast South Island and Tasman and Golden Bays, March-April 2000 (KAH0004). *NIWA Technical Report 115*. 71 p.
- Stevenson, M L (2004) Trawl survey of the west coast of the South Island and Tasman and Golden Bays, March-April 2003 (KAH0304). *New Zealand Fisheries Assessment Report 2004/4*. 69 p.
- Stevenson, M L (2007) Inshore trawl surveys of the west coast of the South Island and Tasman and Golden Bays, March-April 2007 (KAH0704). *New Zealand Fisheries Assessment Report 2007/41*. 64 p.
- Stevenson, M L (2012) Inshore trawl survey of the west coast of the South Island and Tasman and Golden Bays, March-April 2011. *New Zealand Fisheries Assessment Report 2012/50*. 77 p.
- Stevenson, M L; Hanchet, S M (2000) Review of the inshore trawl survey series of the west coast South Island and Tasman and Golden Bays, 1992–1997. *NIWA Technical Report 82*. 79 p.
- Sutton, C P (1999) Ageing methodology, growth parameters, and estimates of mortality for giant stargazer (*Kathetostoma giganteum*) from the east and south coasts of the South Island. New Zealand Fisheries Assessment Research Document 1999/15. 19 p. (Unpublished document held by NIWA library, Wellington.)
- Sutton, C P (2004) Estimation of age, growth, and mortality of giant stargazer (*Kathetostoma giganteum*) from Southland trawl surveys between 1993 and 1996. *New Zealand Fisheries Assessment Report 2004/38*. 14 p.
- Tate, M L (1987) The species and stock structure of the New Zealand inshore fishery for giant stargazer. MSc thesis lodged at University of Otago, Dunedin. 134 p.
- Vignaux, M (1997) CPUE analyses for fishstocks in the adaptive management programme. New Zealand Fisheries Assessment Research Document 1997/24. 68 p. (Unpublished document held by NIWA library, Wellington.)