



Fisheries New Zealand

Tini a Tangaroa

A comparison of age data of orange roughy (*Hoplostethus atlanticus*) from the central Louisville Seamount Chain in 1995 and 2013–15

New Zealand Fisheries Assessment Report 2019/29

P.L. Horn
C. Ó Maolagáin

ISSN 1179-5352 (online)
ISBN 978-0-9951271-0-4 (online)

July 2019



Requests for further copies should be directed to:

Publications Logistics Officer
Ministry for Primary Industries
PO Box 2526
WELLINGTON 6140

Email: brand@mpi.govt.nz
Telephone: 0800 00 83 33
Facsimile: 04-894 0300

This publication is also available on the Ministry for Primary Industries websites at:
<http://www.mpi.govt.nz/news-and-resources/publications>
<http://fs.fish.govt.nz> go to Document library/Research reports

© Crown Copyright – Fisheries New Zealand

Table of Contents

EXECUTIVE SUMMARY	1
1. INTRODUCTION.....	2
2. METHODS.....	2
3. RESULTS.....	3
4. DISCUSSION	7
5. ACKNOWLEDGMENTS.....	11
6. REFERENCES.....	11
APPENDIX A. Age data	12

EXECUTIVE SUMMARY

Horn, P.L.; Ó Maolagáin, C. (2019). A comparison of age data of orange roughy (*Hoplostethus atlanticus*) from the central Louisville Seamount Chain in 1995 and 2013–15.

New Zealand Fisheries Assessment Report 2019/29. 34 p.

This report describes and compares the age data from samples of the commercial catch of orange roughy (*Hoplostethus atlanticus*) taken on the central Louisville Seamount Chain (east of the New Zealand EEZ) in 1995 and 2013–15. There was a clear difference in the length distributions between the two samples but this could be due to sampling effort. Overall, a marked reduction in the relative abundance of larger, older males occurred in the latter fishing period. The mean age of adult orange roughy was about 8 years lower in 2013–15 than in 1995. Estimated age at maturity was 31 years. Age estimates ranged from 21 to 230 years; the latter value is believed to be the oldest age estimate for an orange roughy determined anywhere. Fish aged greater than 200 years comprised 0.5% of the dataset.

1. INTRODUCTION

This report fulfils the reporting requirements relating to orange roughy (*Hoplostethus atlanticus*) for Objective 2 of Project MID201803, “Routine age determination of middle depth and deepwater species from commercial fisheries and resource surveys” and was funded by the Ministry for Primary Industries (MPI). The research activity in 2018–19 was the preparation and ageing of otoliths of orange roughy sampled from the central Louisville Seamount Chain (as defined by Clark et al. (2016)), part of a chain of guyots (referred to as seamounts herein) in international waters to the east of the New Zealand EEZ. The required outcome was a set of age-length data from samples collected in 1995 (near the start of the commercial fishery), and about two decades later (2013–15). These are the first substantial sets of age data produced for orange roughy from this area.

A protocol for ageing orange roughy was developed during an international workshop in 2007, and a formal documentation of this protocol was produced by Horn et al. (2016). The growth of juvenile orange roughy was validated by examining the otolith marginal increment type and by length frequency analysis (Mace et al. 1990). Later, Andrews et al. (2009) applied an improved lead-radium dating technique to orange roughy otolith cores, grouped by growth-zone counts from thin sections to validate age data. Results showed a high degree of correlation of the growth-zone counts to the expected lead-radium growth curve and provided support for both a centenarian life span for orange roughy and for the age estimation procedures using thin otolith sectioning (Horn et al. 2016).

2. METHODS

All fish length and catch data and otoliths used in this analysis were collected by New Zealand Government observers aboard commercial fishing trawlers. To maintain consistency between the early (1995) and more recent (2013–15) samples, all data were selected from fishing that occurred in June or July, in a rectangular area referred to as the central Louisville Seamount Chain and defined by latitudes 39.4°–42.9° S and longitudes 162.5°–167.0° W (see Clark et al. 2016) (Figure 1). The 82 available tows sampled for otoliths were, however, from an even smaller geographical area defined by latitudes 40.6°–42.4° S and longitudes 163.7°–165.4° W. Of those tows, 55 were fished on a close to a pair of seamounts individually referred to as Ghost and Whales, 20 were from the Valerie seamount, 6 were from seamount 1485, and one was 1° south of Valerie (see figure 6 of Clark et al. 2016).

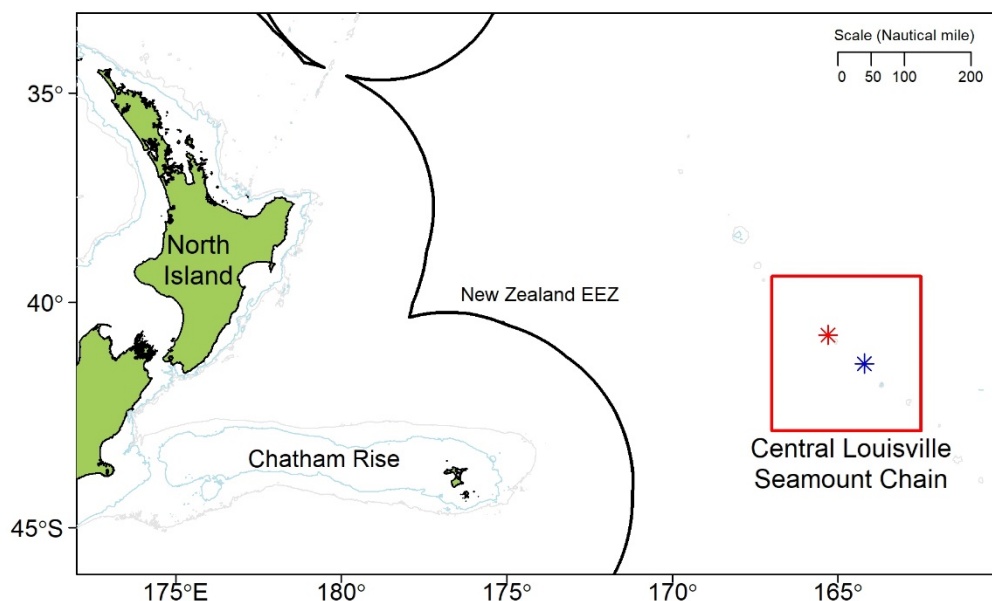


Figure 1: Location of the central Louisville Seamount Chain. The positions of the Ghost and Whales seamounts (red asterisk) and the Valerie seamount (blue asterisk) are also shown. Depth contours are 500 m (light blue) and 1000 m (grey).

Overall length-frequency distributions for the early and recent fisheries were derived by scaling length-frequency data from each sampled tow up to the total catch from that tow, and then combining the distributions from all tows. Standard length (SL) measurements were made for all samples.

Orange roughy otoliths were prepared using the NIWA preparation method described in Horn et al. (2016). One whole otolith from each of the selected fish was individually embedded in resin and cured in an oven. A thin section was cut along a line from the primordium (otolith nucleus region) through the most uniform (and usually the longest) posterior-dorsal axis using a sectioning saw with dual diamond-impregnated wafering blades separated by a 380 µm spacer. The section was mounted on a glass microscope slide under a glass cover slip. When collected, some otoliths had been damaged such that the tips of the posterior-dorsal axes were missing on both otoliths. In some situations, however, it was possible to take sub-optimal, but complete, sections at other locations on the posterior-dorsal axis. For some sampled fish, both otoliths were too damaged or incomplete, and consequently neither otolith was prepared. Also, a small number (0.4%) of otoliths were embedded but shattered when the section was being cut; these are referred to as ‘failed preparations’.

All otoliths were read once by one reader using the otolith interpretation and reading protocols described in the ageing methodology document (Horn et al. 2016). The data produced include counts of zones from the primordium to the transition zone (TZ, the zone that marks the onset of orange roughy maturity (Francis & Horn 1997)), and from the TZ to the otolith margin, and readability codes for those readings provided on a 5-stage readability scale. Otolith data with a readability code of 5 (i.e., unreadable) for either the pre- or post-TZ readings were excluded. The presence of a TZ was identified, ideally, by the following three criteria: a clear reduction in zone width, a marked change in the optical density of the otolith from dark to light, and a change in curvature of the posterior arm of the otolith (Horn et al. 2016). TZs were classified using a 4-stage scale, i.e.:

- 0, not yet formed (or observed),
- 1, clear and unambiguous with all three criteria met,
- 2, a gradual transition with at least two criteria met,
- 3, a gradual transition with none or one of the criteria met.

For TZ classification 3, only a total age was recorded by the reader as the likely location of the TZ was undefined.

The distributions of the raw age-length data were compared by visual examination.

3. RESULTS

The details of the available observer data (Table 1) show that the sampling in the more recent multi-year period (June–July in each of the years 2013 to 2015) provided more data than in June–July 1995. About four times as many fish were measured, and three times as much catch observed, in the recent relative to the earlier sampling period. The sampled geographical features, however, were generally consistent over time — all the 1995 tows and over 90% of the 2013–15 tows (81% of the catch) were from the Ghost, Whales or Valerie seamounts.

Otolith collection in 1995 was not completed as carefully as it could have been. Out of the 279 otolith pairs collected, both otoliths in 36 pairs had been broken and were sufficiently incomplete to preclude any preparation. A further 99 of the remaining 343 otolith pairs had had their fine posterior-dorsal tips broken off but could still be prepared by taking a section along a sub-optimal axis (Table 1). The 2013–15 otolith samples had been more carefully collected, but 15% of the available otolith pairs were still unusable or sub-optimally sectioned (Table 1).

A summary of the age readings from the two samples is given in Table 2, and all the raw data are listed in Appendix A. The average age of all fish, and of all adult fish (i.e., those where a TZ was present), was higher in the 1995 sample, relative to 2013–15.

There was no significant difference in the estimated age at the TZ formation (i.e., age at maturity) between the early and recent samples. The estimated age at maturity for central Louisville Ridge orange roughy was 31 years.

Table 1: Details of the observed trips and tows, and the orange roughy otoliths sampled and subsequently analysed in the current project.

Sample period	1995		2013–15	
	No. of trips	1		9
No. of tows	14		77 [#]	
Total observed catch (t)	234.8		752.8	
Fish measured (male, female, total)	748, 415, 1163		2192, 3226, 5418	
Otolith pairs collected	279		1272	
	No.	%	No.	%
Otoliths suitable for preparation	243	100.0	1229	100.0
Successful readings	238	97.9	1197	97.4
Sub-optimal preparations	99	40.7	151	12.3
Failed preparations	1	0.4	5	0.4
Unreadable sections	4	1.6	27	2.2

[#] Only 68 of these tows were sampled for otoliths.

Table 2: Summary of raw age data (mean age in years, sample number, and age range) derived from the 1995 and 2013–15 otolith samples.

Sample period	1995			2013–15		
	Mean	<i>N</i>	Range	Mean	<i>N</i>	Range
Age all fish	67.0	238	21–179	61.7	1197	23–230
Age adult fish	73.1	205	31–179	65.4	1074	26–230
Age at TZ	31.2	184	24–39	30.5	935	21–40

There was a marked difference in the scaled length-frequency distributions from the early and recent commercial fishery observed landings (Figure 2). While both distributions have a mode at about 34–35 cm SL and very few fish shorter than 30 cm, fish of lengths 37–44 cm were much more abundant in 1995 than in 2013–14. There was also a difference between sex ratios: in 1995, 66% of fish were males, compared to only 40% in 2013–14. Males of lengths 37–44 cm were much less abundant in 2013–15 than they were in 1995.

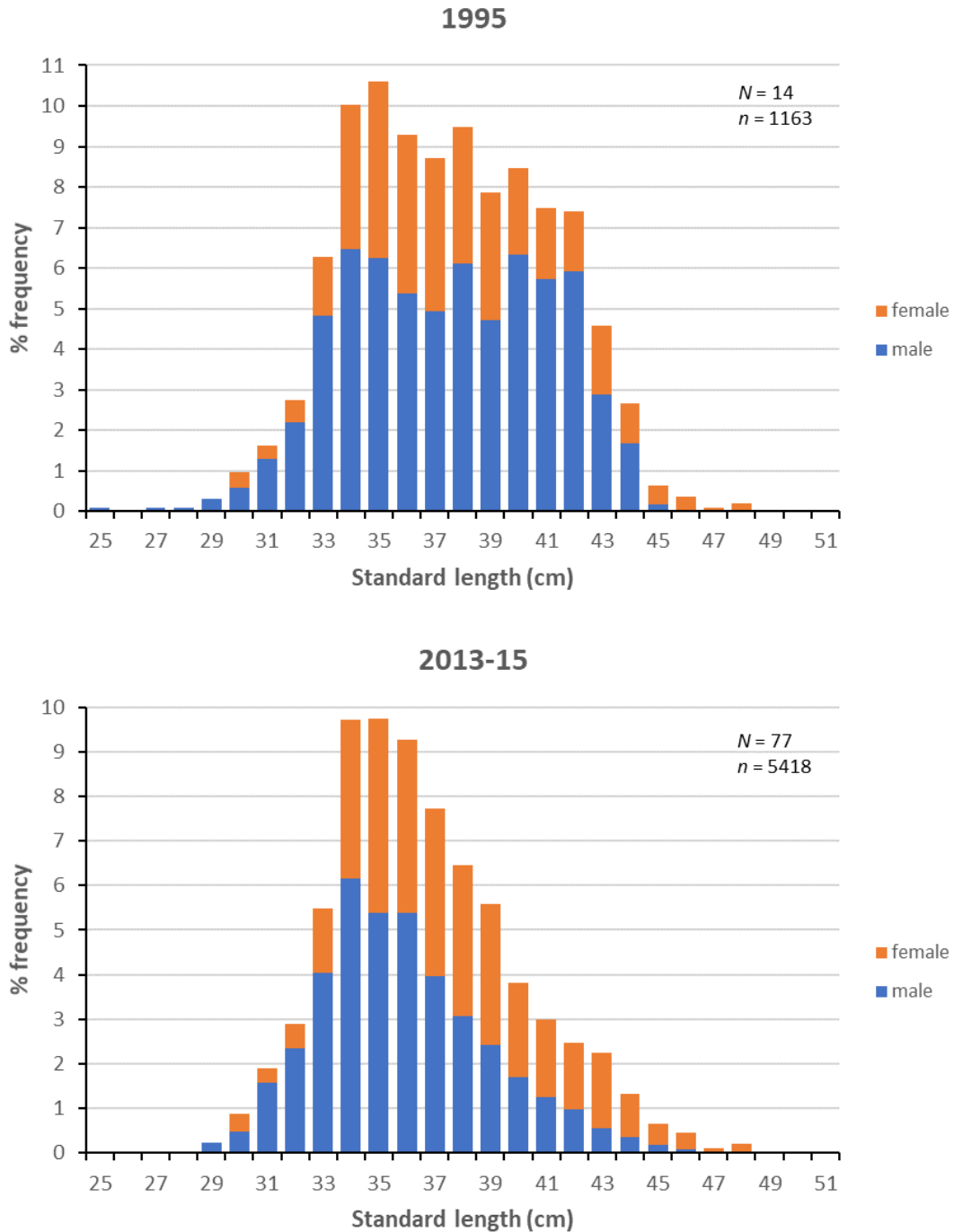


Figure 2: Scaled length-frequency distributions of the observed catch of orange roughy from the central Louisville Ridge in June–July 1995, and 2013–2015. N , number of sampled tows; n , number of fish measured.

The age-length data points for the two samples separately are presented in Figure 3. There is no obvious difference in the length-at-age between the two periods. Growth parameters were not estimated here, but it appears likely that females are, on average, larger at age than males. Maximum estimated age was 179 years in 1995 and 230 years in 2013–15. Fish estimated to be aged 150 years or older comprised 4.2% and 3.8% of the 1995 and 2013–15 samples respectively.

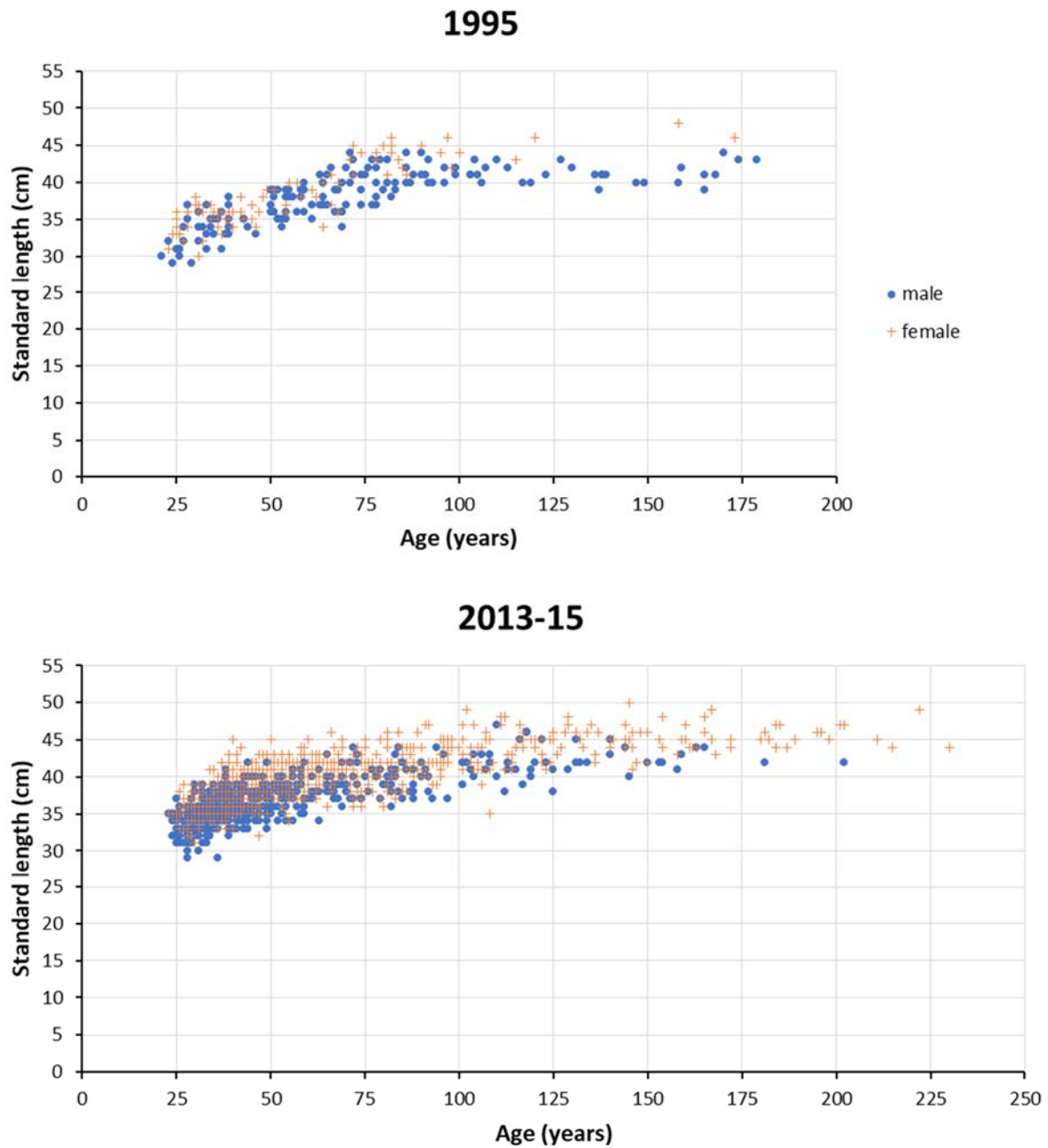


Figure 3: Orange roughy age-length data, by sex, from commercial fishery samples on the central Louisville Ridge, in 1995 and 2013–15.

The age-frequency distributions of the raw age data are quite different between samples (Figure 4). In 1995, fish were relatively abundant across an age range of 25–100 years. In 2013–15, there was a strong modal peak around 35–45 years, with relatively abundant fish of ages 25–60 years. The much smoother recent distribution was likely to have been a function of the larger sample size, relative to 1995.

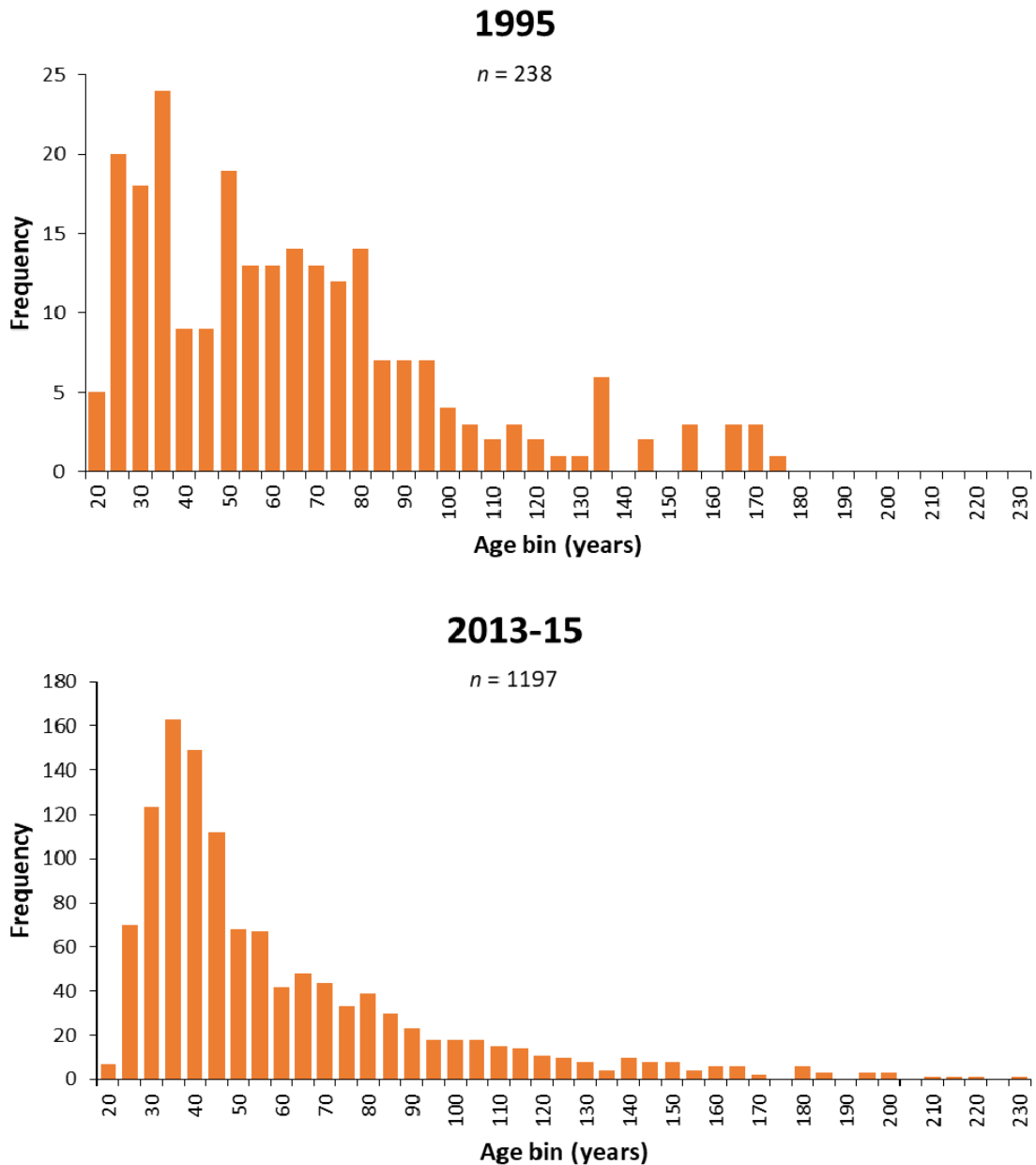


Figure 4: Frequency distributions of raw age data, in 5 year age bins, for orange roughy from commercial fishery samples on the central Louisville Ridge, in 1995 and 2013–15. Age bin labels refer to the smallest age in that bin, i.e., the bin labelled “20” comprises fish aged 20–24 years.

4. DISCUSSION

Age data were produced for orange roughy from commercial fishery samples on the central Louisville Ridge taken near the start of the fishery (1995) and about 20 years later (2013–15). These data constitute the only available substantial collection of age information for orange roughy in that area.

There is a clear difference between time periods in the scaled length-frequency distributions, with the main difference being a marked reduction in the relative abundance of large males in the latter period. This length frequency difference corresponds with a difference in the distribution of the raw age data;

there were relatively fewer older males in the latter period. The overall mean age of captured fish and the mean age of adult (i.e., post-TZ) fish were lower in the more recent sample by about 5 and 8 years, respectively. The proportions of very old fish (i.e., 150 years or greater), however, were little different between the two sampled periods. There was also no temporal change in the estimated age at maturity.

The reasons for the temporal difference in the length frequencies and age frequencies are uncertain. They could be a real effect on the population composition as a consequence of fishing, but could also be driven by less comprehensive sampling in 1995 (i.e., only 14 tows, compared to 68 in 2013–15). A more in-depth analysis of length-frequency data in other years, and/or further ageing investigations, could provide an understanding of this issue.

The estimated age at maturity of central Louisville Ridge orange roughy (31 years) is slightly higher than estimates for mainland New Zealand stocks (26–29 years, authors' unpublished data derived using the revised ageing protocols). The maximum estimated age for Louisville Ridge fish (230 years) is greater than any previous orange roughy age estimate from the New Zealand region, and similar to the maximum orange roughy age estimate of which we are aware (i.e., c. 250 years for a fish caught on the Cascade Seamount off Tasmania (K. Krusic-Golub, Fish Ageing Services, pers. comm.). Images depicting the Louisville Ridge otolith and an interpretation of zones in its section are presented in Figures 5–7 (preparation #1090). Note, however, that this section and many others in this sample had post-TZ readability scores of 4 (i.e., sample is difficult to interpret and subject to large interpretational differences). Preparation #1090 was read five times and produced total zone counts from 230 to 245. The most conservative interpretation is illustrated here. The highest previous age estimate from the New Zealand EEZ was a 180-year-old roughy from the Morgue seamount on Chatham Rise (Doonan et al. 2018). The Louisville Ridge sample (both periods combined) comprised 0.5% of fish aged greater than 200 years.

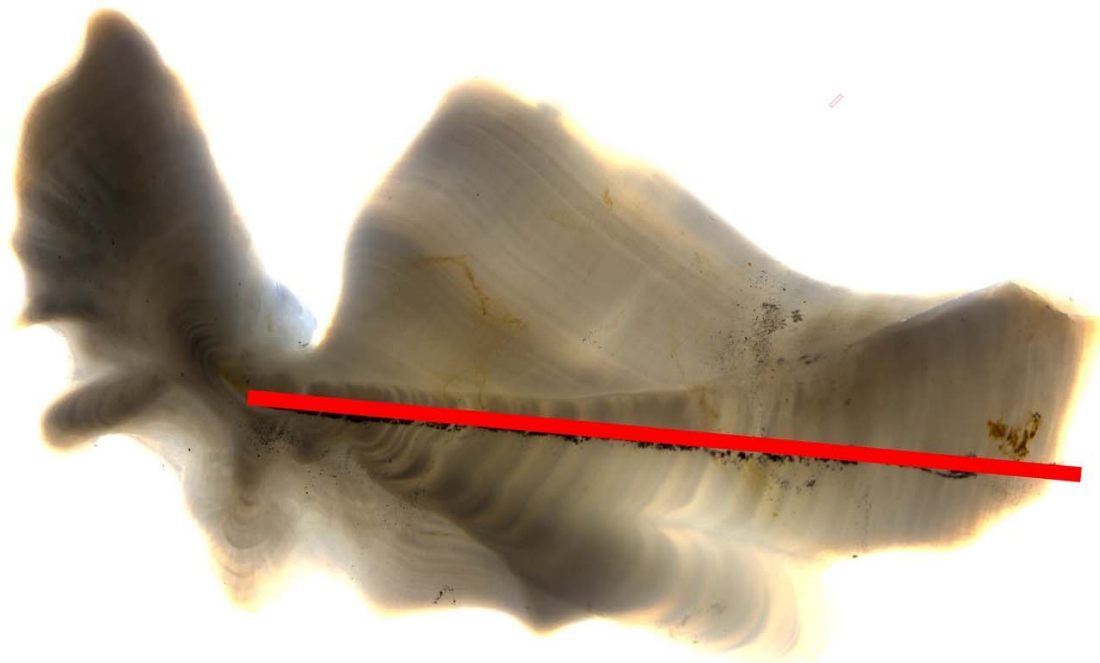


Figure 5: Whole sister otolith of preparation #1090, showing sectioning axis (red line), illuminated using transmitted light. The length of the red line is about 17 mm.

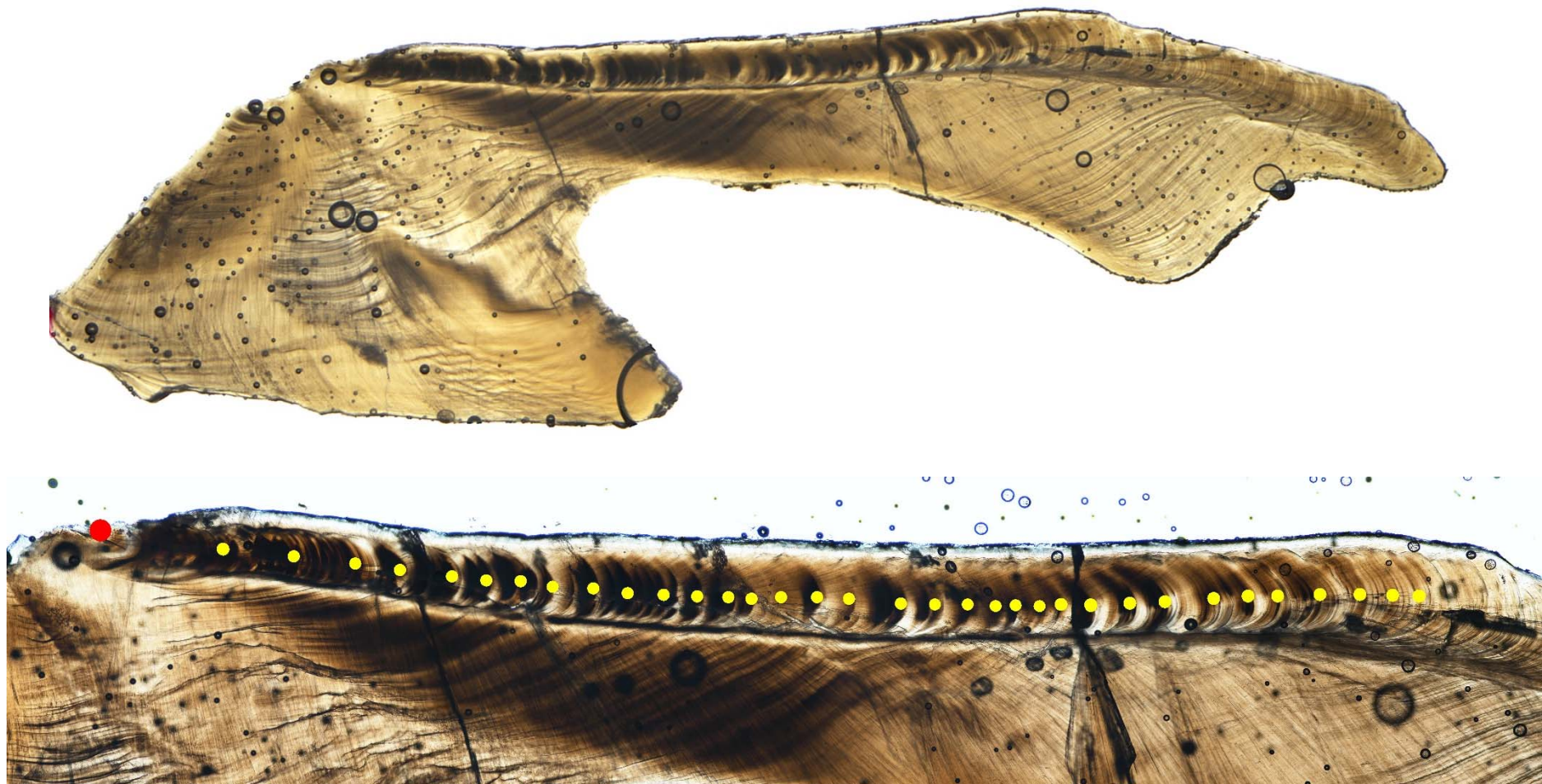


Figure 6: View of the entire section of otolith preparation #1090, and an enlarged view showing the counted zones (indicated by yellow dots) from the primordium (red dot) to the transition zone, illuminated using transmitted light.

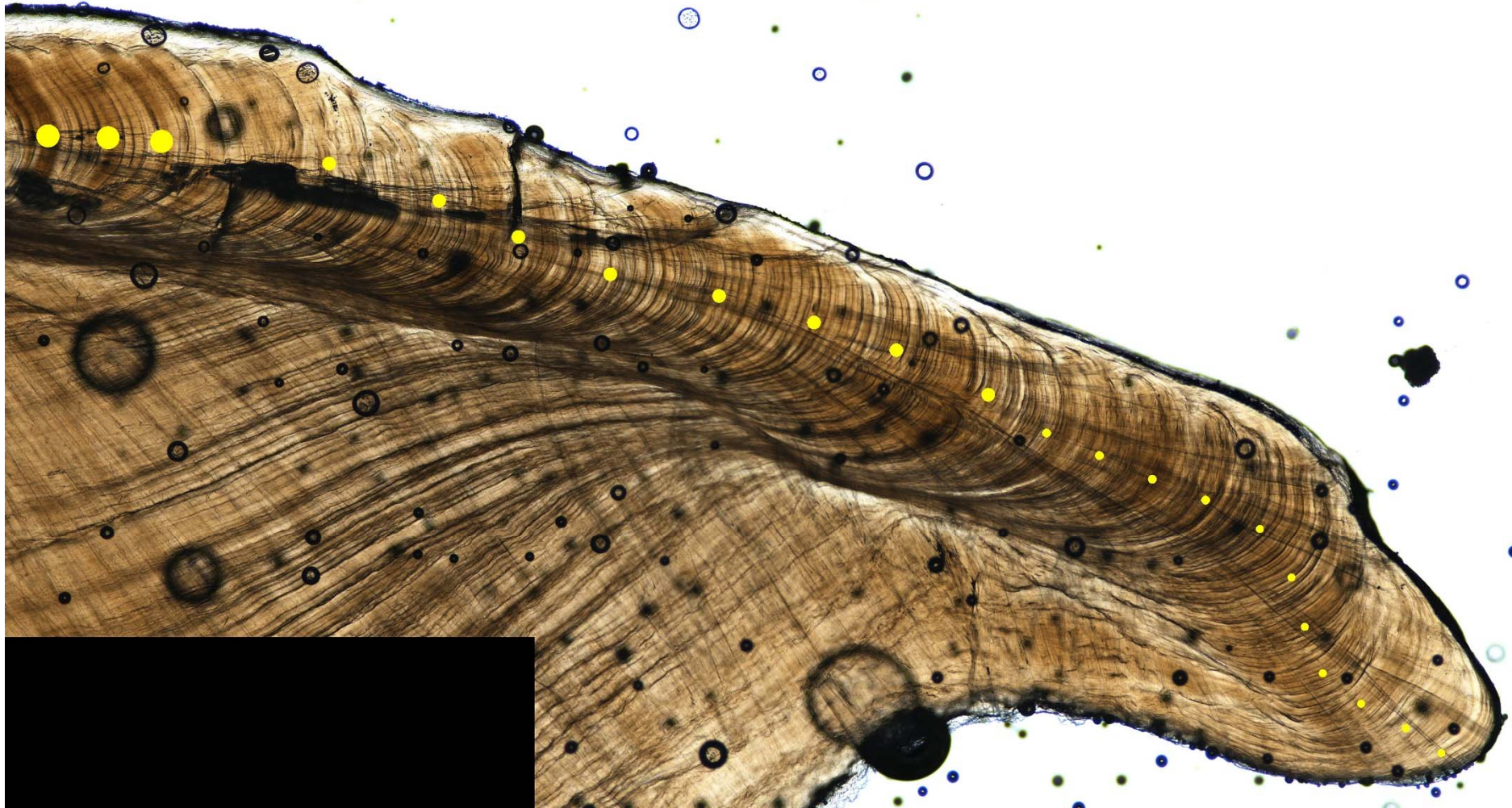


Figure 7: View of the post-TZ section of otolith preparation #1090, showing the last three pre-TZ zones (large yellow dots) and post-TZ zones marked in groups of 10 zones each indicated by smaller yellow dots.

5. ACKNOWLEDGMENTS

We thank Alan Hart for assistance with otolith section preparation, and Di Tracey, Malcolm Clark and Richard O'Driscoll for reviewing the manuscript. This work was funded by the Ministry for Primary Industries under project MID2018-03.

6. REFERENCES

- Andrews, A.H.; Tracey, D.M.; Dunn, M.R. (2009). Lead-radium dating of orange roughy (*Hoplostethus atlanticus*): validation of a centenarian life span. *Canadian Journal of Fisheries and Aquatic Sciences* 66: 1130–1140.
- Clark, M.R.; McMillan, P.J.; Anderson, O.F.; Roux, M-J. (2016). Stock management areas for orange roughy (*Hoplostethus atlanticus*) in the Tasman Sea and western South Pacific Ocean. *New Zealand Fisheries Assessment Report 2016/19*. 27 p.
- Doonan, I.J.; Horn, P.L.; Ó Maolagáin, C.; Datta, S. (2018). Age composition of orange roughy from ORH 3B, Chatham Rise, 2016: Mount Muck, Old Plume, Rekohu Plume, and Morgue. *New Zealand Fisheries Assessment Report 2018/48*. 15 p.
- Francis, R.I.C.C.; Horn, P.L. (1997). Transition zone in otoliths of orange roughy (*Hoplostethus atlanticus*) and its relationship to the onset of maturity. *Marine Biology* 129: 681–687.
- Horn, P.L.; Tracey, D.M.; Doonan, I.J.; Krusic-Golub, K. (2016). Age determination protocol for orange roughy (*Hoplostethus atlanticus*). *New Zealand Fisheries Assessment Report 2016/3*. 30 p.
- Mace, P.M.; Fenaughty, J.M.; Coburn, R.P.; Doonan, I.J. (1990). Growth and productivity of orange roughy (*Hoplostethus atlanticus*) on the north Chatham Rise. *New Zealand Journal of Marine and Freshwater Research* 24: 105–119.

APPENDIX A. Age data

Table A1: Data from all successfully aged otolith preparations. prep, preparation number; lgth, fish standard length (cm); 0-TZ, zone count from nucleus to TZ (or total zone count if TZR = 3); R1, readability of 0-TZ; TZR, transition zone classification; TZ-E, zone count from TZ to otolith edge; R2, readability of TZ-E; Total, fish age; axis, indicates where otolith section axis was sub-optimal (SO); date, capture date.

prep	trip	tow	fish	lgth	sex	0-TZ	R1	TZR	TZ-E	R2	Total	axis	seamount	date
1	859	11	1	45	2	33	3	2	57	3	90		Ghost/Whales	1995-06-28
2	859	11	2	46	2	38	4	2	44	3	82		Ghost/Whales	1995-06-28
3	859	11	3	41	2	38	4	1	43	3	81	SO	Ghost/Whales	1995-06-28
4	859	11	4	37	1	34	3	1	30	4	64	SO	Ghost/Whales	1995-06-28
5	859	11	5	37	1	33	4	1	31	4	64		Ghost/Whales	1995-06-28
6	859	11	6	43	2	31	4	2	40	4	71	SO	Ghost/Whales	1995-06-28
7	859	11	7	42	1	32	3	1	75	4	107		Ghost/Whales	1995-06-28
8	859	11	8	44	2	30	4	1	48	4	78		Ghost/Whales	1995-06-28
9	859	11	9	44	2	38	3	1	62	4	100		Ghost/Whales	1995-06-28
10	859	11	10	43	2	35	3	1	80	4	115		Ghost/Whales	1995-06-28
11	859	11	11	41	2	86	4	3			86		Ghost/Whales	1995-06-28
12	859	11	12	46	2	34	4	1	63	4	97	SO	Ghost/Whales	1995-06-28
13	859	11	13	42	2	36	3	1	49	4	85		Ghost/Whales	1995-06-28
14	859	11	14	43	2	28	4	1	50	4	78	SO	Ghost/Whales	1995-06-28
15	859	11	15	44	2	36	3	2	59	4	95	SO	Ghost/Whales	1995-06-28
16	859	11	17	39	1	30	3	1	44	4	74	SO	Ghost/Whales	1995-06-28
17	859	11	18	45	2	34	3	2	46	4	80		Ghost/Whales	1995-06-28
18	859	11	19	48	2	37	4	1	121	4	158		Ghost/Whales	1995-06-28
19	859	11	20	37	1	30	4	2	40	4	70		Ghost/Whales	1995-06-28
20	859	25	1	36	1	26	4	2	24	4	50		Ghost/Whales	1995-06-29
21	859	25	2	34	1	28	3	1	41	3	69		Ghost/Whales	1995-06-29
22	859	25	4	36	2	29	4	1	39	4	68		Ghost/Whales	1995-06-29
23	859	25	5	37	2	29	4	1	25	3	54	SO	Ghost/Whales	1995-06-29
24	859	25	7	44	1	38	3	1	52	3	90		Ghost/Whales	1995-06-29
25	859	25	8	41	1	36	4	1	38	4	74		Ghost/Whales	1995-06-29
26	859	25	9	44	2	28	4	1	46	4	74		Ghost/Whales	1995-06-29
27	859	25	10	44	2	36	3	1	46	4	82		Ghost/Whales	1995-06-29
28	859	25	11	40	2	31	3	2	33	3	64		Ghost/Whales	1995-06-29
29	859	25	12	35	2	39	3	3			39		Ghost/Whales	1995-06-29
30	859	25	15	44	1	27	3	1	44	4	71		Ghost/Whales	1995-06-29
31	859	25	16	43	1	32	3	1	49	3	81	SO	Ghost/Whales	1995-06-29
32	859	25	17	40	1	33	4	2	63	4	96		Ghost/Whales	1995-06-29
33	859	25	20	37	1	28	2	1	33	4	61	SO	Ghost/Whales	1995-06-29
34	859	34	1	35	1	28	3	1	24	3	52	SO	Ghost/Whales	1995-06-30
35	859	34	3	39	1	30	3	1	29	3	59		Ghost/Whales	1995-06-30
36	859	34	4	40	1	33	3	1	60	3	93		Ghost/Whales	1995-06-30
37	859	34	5	43	1	29	4	2	150	4	179	SO	Ghost/Whales	1995-06-30
38	859	34	6	45	2	36	4	1	46	4	82		Ghost/Whales	1995-06-30
39	859	34	7	38	1	28	4	2	54	4	82	SO	Ghost/Whales	1995-06-30
40	859	34	8	42	1	36	2	1	63	3	99		Ghost/Whales	1995-06-30
41	859	34	10	45	2	36	4	2	36	4	72	SO	Ghost/Whales	1995-06-30
42	859	34	11	36	1	27	3	1	32	3	59		Ghost/Whales	1995-06-30
43	859	34	12	43	1	31	3	1	48	4	79	SO	Ghost/Whales	1995-06-30
44	859	34	13	42	2	34	3	1	64	4	98	SO	Ghost/Whales	1995-06-30
45	859	34	14	38	2	35	2	1	27	4	62	SO	Ghost/Whales	1995-06-30
46	859	34	15	39	1	30	2	2	20	3	50	SO	Ghost/Whales	1995-06-30
47	859	34	16	39	1	28	3	2	30	3	58	SO	Ghost/Whales	1995-06-30
48	859	34	17	41	1	30	4	2	33	4	63	SO	Ghost/Whales	1995-06-30
49	859	34	18	39	1	27	3	1	40	4	67	SO	Ghost/Whales	1995-06-30
50	859	34	20	36	1	34	4	2	23	3	57	SO	Ghost/Whales	1995-06-30
51	859	56	1	41	1	31	4	1	60	4	91	SO	Ghost/Whales	1995-07-02
52	859	56	2	41	1	32	3	1	73	4	105	SO	Ghost/Whales	1995-07-02
53	859	56	3	35	1	34	3	1	27	3	61	SO	Ghost/Whales	1995-07-02
54	859	56	4	43	1	30	3	1	42	4	72	SO	Ghost/Whales	1995-07-02

55	859	56	5	35	1	31	4	2	22	4	53	SO	Ghost/Whales	1995-07-02
56	859	56	6	37	1	34	4	2	44	4	78	SO	Ghost/Whales	1995-07-02
57	859	56	7	40	1	34	3	1	49	4	83		Ghost/Whales	1995-07-02
58	859	56	8	40	1	37	4	1	32	3	69	SO	Ghost/Whales	1995-07-02
59	859	56	9	41	1	33	4	1	39	4	72	SO	Ghost/Whales	1995-07-02
60	859	56	11	40	1	39	3	1	39	4	78		Ghost/Whales	1995-07-02
61	859	56	12	40	1	87	4	3			87	SO	Ghost/Whales	1995-07-02
62	859	56	13	43	1	34	4	2	70	4	104	SO	Ghost/Whales	1995-07-02
63	859	56	14	35	1	30	4	1	13	3	43		Ghost/Whales	1995-07-02
64	859	56	15	41	1	123	4	3			123		Ghost/Whales	1995-07-02
65	859	56	16	36	1	28	4	2	26	4	54		Ghost/Whales	1995-07-02
66	859	56	17	39	1	28	4	2	24	4	52	SO	Ghost/Whales	1995-07-02
68	859	56	19	42	1	30	3	1	40	3	70	SO	Ghost/Whales	1995-07-02
69	859	56	20	40	1	29	4	1	30	4	59		Ghost/Whales	1995-07-02
70	859	69	1	38	1	33	4	1	22	3	55		Ghost/Whales	1995-07-03
71	859	69	2	39	1	32	3	1	133	4	165	SO	Ghost/Whales	1995-07-03
72	859	69	3	39	1	34	4	1	34	4	68	SO	Ghost/Whales	1995-07-03
73	859	69	4	41	1	99	4	3			99		Ghost/Whales	1995-07-03
74	859	69	5	37	1	30	4	1	44	3	74		Ghost/Whales	1995-07-03
75	859	69	6	36	1	31	3	1	36	3	67		Ghost/Whales	1995-07-03
76	859	69	7	42	1	32	4	1	34	3	66		Ghost/Whales	1995-07-03
77	859	69	8	41	1	35	4	1	101	4	136		Ghost/Whales	1995-07-03
78	859	69	9	36	1	33	3	1	36	4	69		Ghost/Whales	1995-07-03
79	859	69	11	43	1	37	3	1	90	3	127		Ghost/Whales	1995-07-03
80	859	69	12	41	1	35	3	1	130	4	165		Ghost/Whales	1995-07-03
81	859	69	13	40	1	28	3	1	64	3	92	SO	Ghost/Whales	1995-07-03
82	859	69	14	42	1	31	3	1	55	3	86	SO	Ghost/Whales	1995-07-03
83	859	69	15	37	1	36	3	2	14	3	50	SO	Ghost/Whales	1995-07-03
84	859	69	16	40	2	29	4	1	28	3	57		Ghost/Whales	1995-07-03
85	859	69	17	35	1	34	2	2	9	2	43		Ghost/Whales	1995-07-03
87	859	69	19	38	2	26	3	1	32	3	58	SO	Ghost/Whales	1995-07-03
88	859	69	20	40	1	30	4	2	34	3	64	SO	Ghost/Whales	1995-07-03
89	859	89	1	41	1	29	4	2	61	3	90		Ghost/Whales	1995-07-05
90	859	89	2	34	2	36	4	3			36	SO	Ghost/Whales	1995-07-05
91	859	89	3	36	2	42	3	3			42		Ghost/Whales	1995-07-05
92	859	89	4	38	1	27	3	1	27	4	54	SO	Ghost/Whales	1995-07-05
93	859	89	5	36	2	40	3	3			40		Ghost/Whales	1995-07-05
94	859	89	6	35	2	36	3	1	7	2	43		Ghost/Whales	1995-07-05
95	859	89	7	44	1	32	3	1	138	3	170		Ghost/Whales	1995-07-05
96	859	89	8	36	2	28	2	0			28	SO	Ghost/Whales	1995-07-05
97	859	89	9	39	1	38	3	1	45	3	83	SO	Ghost/Whales	1995-07-05
98	859	89	10	36	1	28	3	1	9	2	37		Ghost/Whales	1995-07-05
99	859	89	11	43	1	28	4	1	146	4	174		Ghost/Whales	1995-07-05
100	859	89	12	36	2	33	3	2	6	3	39	SO	Ghost/Whales	1995-07-05
101	859	89	13	36	2	26	3	2	14	3	40		Ghost/Whales	1995-07-05
102	859	89	14	35	2	25	3	0			25		Ghost/Whales	1995-07-05
103	859	89	15	34	1	26	3	2	8	2	34	SO	Ghost/Whales	1995-07-05
104	859	89	16	41	1	33	3	1	105	4	138		Ghost/Whales	1995-07-05
105	859	89	17	35	2	30	3	2	4	2	34	SO	Ghost/Whales	1995-07-05
106	859	89	19	34	1	27	3	0			27	SO	Ghost/Whales	1995-07-05
107	859	89	20	35	1	27	3	2	9	3	36		Ghost/Whales	1995-07-05
108	859	91	1	46	2	35	3	1	138	4	173		Ghost/Whales	1995-07-06
109	859	91	2	42	1	31	3	1	45	4	76	SO	Ghost/Whales	1995-07-06
110	859	91	3	35	1	28	3	0			28		Ghost/Whales	1995-07-06
111	859	91	4	39	2	37	4	1	24	4	61		Ghost/Whales	1995-07-06
112	859	91	6	33	2	24	4	0			24	SO	Ghost/Whales	1995-07-06
113	859	91	7	34	1	32	3	1	7	2	39		Ghost/Whales	1995-07-06
114	859	91	9	44	2	30	4	1	48	4	78	SO	Ghost/Whales	1995-07-06
115	859	91	10	42	1	24	4	1	72	4	96	SO	Ghost/Whales	1995-07-06
116	859	91	11	37	2	31	3	2	3	2	34		Ghost/Whales	1995-07-06
117	859	91	12	43	1	29	3	1	81	4	110		Ghost/Whales	1995-07-06
118	859	91	14	35	1	30	4	1	22	3	52		Ghost/Whales	1995-07-06
119	859	91	15	33	2	26	3	0			26		Ghost/Whales	1995-07-06

120	859	91	16	41	1	34	4	1	134	4	168	Ghost/Whales	1995-07-06	
121	859	91	17	42	1	34	4	1	44	4	78	Ghost/Whales	1995-07-06	
122	859	91	18	40	1	28	4	1	130	4	158	Ghost/Whales	1995-07-06	
123	859	91	19	40	1	31	4	1	116	4	147	Ghost/Whales	1995-07-06	
124	859	91	20	38	1	31	4	2	25	4	56	Ghost/Whales	1995-07-06	
125	859	93	1	41	1	39	3	1	36	4	75	Ghost/Whales	1995-07-07	
126	859	93	2	40	1	27	3	1	122	4	149	Ghost/Whales	1995-07-07	
127	859	93	6	31	1	26	3	0			26	SO	Ghost/Whales	1995-07-07
128	859	93	7	38	1	39	3	3			39		Ghost/Whales	1995-07-07
129	859	93	8	40	1	33	3	1	53	3	86	SO	Ghost/Whales	1995-07-07
130	859	93	9	45	2	80	4	3			80		Ghost/Whales	1995-07-07
132	859	93	11	35	1	34	4	3			34		Ghost/Whales	1995-07-07
133	859	93	12	44	1	32	4	1	54	4	86	SO	Ghost/Whales	1995-07-07
134	859	93	13	38	1	35	4	2	29	3	64	SO	Ghost/Whales	1995-07-07
135	859	93	14	42	1	32	3	1	127	4	159		Ghost/Whales	1995-07-07
136	859	93	15	41	1	34	4	1	105	4	139	SO	Ghost/Whales	1995-07-07
137	859	93	16	42	1	33	4	1	80	3	113		Ghost/Whales	1995-07-07
138	859	93	17	39	1	26	3	1	54	4	80	SO	Ghost/Whales	1995-07-07
139	859	93	18	38	1	27	4	2	51	4	78		Ghost/Whales	1995-07-07
140	859	93	19	40	1	30	4	1	34	4	64	SO	Ghost/Whales	1995-07-07
141	859	93	20	43	2	35	3	2	49	4	84		Ghost/Whales	1995-07-07
142	859	97	1	36	1	29	3	2	22	4	51		Ghost/Whales	1995-07-08
143	859	97	2	34	2	28	3	0			28	SO	Ghost/Whales	1995-07-08
144	859	97	3	40	2	30	4	2	38	4	68	SO	Ghost/Whales	1995-07-08
145	859	97	4	41	1	29	4	1	109	4	138		Ghost/Whales	1995-07-08
146	859	97	5	40	1	33	2	1	48	3	81	SO	Ghost/Whales	1995-07-08
147	859	97	6	42	1	30	4	1	100	4	130		Ghost/Whales	1995-07-08
148	859	97	7	37	1	33	3	1	44	4	77		Ghost/Whales	1995-07-08
149	859	97	9	37	1	28	3	0			28	SO	Ghost/Whales	1995-07-08
150	859	97	10	46	2	120	4	3			120	SO	Ghost/Whales	1995-07-08
151	859	97	11	35	1	36	4	3			36		Ghost/Whales	1995-07-08
152	859	97	14	41	1	34	3	2	104	4	138		Ghost/Whales	1995-07-08
153	859	97	16	45	2	33	3	1	49	4	82		Ghost/Whales	1995-07-08
154	859	97	17	38	1	26	4	1	25	4	51		Ghost/Whales	1995-07-08
155	859	97	19	37	1	36	2	1	27	3	63	SO	Ghost/Whales	1995-07-08
156	859	97	20	40	1	29	3	1	88	4	117		Ghost/Whales	1995-07-08
157	859	141	1	35	2	31	3	2	3	2	34		Valerie	1995-07-13
158	859	141	2	35	1	29	4	2	6	2	35		Valerie	1995-07-13
159	859	141	3	34	2	25	3	0			25	SO	Valerie	1995-07-13
160	859	141	4	36	1	27	4	1	4	2	31	SO	Valerie	1995-07-13
161	859	141	5	36	1	26	4	1	43	3	69		Valerie	1995-07-13
162	859	141	6	35	1	26	3	1	13	2	39		Valerie	1995-07-13
163	859	141	7	31	2	23	3	0			23		Valerie	1995-07-13
164	859	141	8	43	1	33	3	1	59	4	92	SO	Valerie	1995-07-13
165	859	141	11	36	1	27	3	1	24	4	51		Valerie	1995-07-13
166	859	141	13	40	2	29	3	1	28	3	57		Valerie	1995-07-13
167	859	141	14	41	1	30	3	1	58	4	88		Valerie	1995-07-13
168	859	141	15	33	2	25	3	0			25		Valerie	1995-07-13
169	859	141	16	36	2	29	3	2	3	1	32		Valerie	1995-07-13
170	859	141	17	39	1	27	4	2	28	4	55		Valerie	1995-07-13
171	859	141	20	38	2	30	3	0			30	SO	Valerie	1995-07-13
172	859	147	3	35	2	25	4	2	20	4	45		Valerie	1995-07-14
173	859	147	4	34	1	32	4	1	21	3	53		Valerie	1995-07-14
175	859	147	6	30	2	31	4	0			31		Valerie	1995-07-14
176	859	147	9	32	2	27	3	0			27		Valerie	1995-07-14
177	859	147	10	36	2	35	3	0			35		Valerie	1995-07-14
178	859	147	11	39	1	30	3	2	107	3	137		Valerie	1995-07-14
179	859	147	12	29	1	24	3	0			24		Valerie	1995-07-14
180	859	147	13	37	1	34	4	1	5	2	39		Valerie	1995-07-14
181	859	147	14	36	2	31	3	0			31		Valerie	1995-07-14
182	859	147	15	37	2	29	4	2	2	1	31	SO	Valerie	1995-07-14
183	859	147	16	30	1	26	3	0			26	SO	Valerie	1995-07-14
184	859	147	17	34	2	46	3	3			46		Valerie	1995-07-14

185	859	147	18	36	2	28	4	0		28	SO	Valerie	1995-07-14	
186	859	147	19	30	1	21	3	0		21	SO	Valerie	1995-07-14	
187	859	152	1	32	1	27	3	2	4	2		Valerie	1995-07-15	
188	859	152	2	32	1	27	3	0				Valerie	1995-07-15	
189	859	152	3	41	1	34	3	2	31	3		SO	Valerie	1995-07-15
190	859	152	4	32	1	23	3	0				Valerie	1995-07-15	
192	859	152	6	39	2	38	4	2	11	3		SO	Valerie	1995-07-15
193	859	152	7	34	2	36	4	3				Valerie	1995-07-15	
194	859	152	8	38	2	34	3	1	8	2		SO	Valerie	1995-07-15
195	859	152	9	31	1	25	3	0				Valerie	1995-07-15	
196	859	152	10	43	1	29	4	1	48	3		SO	Valerie	1995-07-15
197	859	152	11	31	1	26	4	0				Valerie	1995-07-15	
198	859	152	12	40	1	36	3	2	35	4		Valerie	1995-07-15	
199	859	152	13	31	1	33	4	0				Valerie	1995-07-15	
200	859	152	14	36	2	36	3	3				Valerie	1995-07-15	
201	859	152	15	32	2	28	4	2	4	2		SO	Valerie	1995-07-15
202	859	152	16	33	1	35	3	3				Valerie	1995-07-15	
203	859	152	17	35	2	38	4	3				Valerie	1995-07-15	
204	859	152	18	40	1	32	4	2	74	4		Valerie	1995-07-15	
205	859	152	19	41	1	33	2	1	70	4		Valerie	1995-07-15	
206	859	159	1	35	2	26	3	2	10	3		Valerie	1995-07-16	
207	859	159	2	40	1	35	4	1	84	3		Valerie	1995-07-16	
208	859	159	3	41	2	28	4	1	38	3		SO	Valerie	1995-07-16
209	859	159	4	29	1	29	4	0				SO	Valerie	1995-07-16
210	859	159	5	41	2	32	4	1	40	4		SO	Valerie	1995-07-16
211	859	159	6	41	1	28	4	1	75	4		Valerie	1995-07-16	
212	859	159	7	33	1	27	4	2	11	3		Valerie	1995-07-16	
213	859	159	8	39	1	30	4	1	24	3		SO	Valerie	1995-07-16
214	859	159	9	37	1	30	3	1	35	3		Valerie	1995-07-16	
215	859	159	10	39	2	38	4	2	13	3		SO	Valerie	1995-07-16
216	859	159	11	39	1	32	3	1	19	3		SO	Valerie	1995-07-16
217	859	159	12	34	1	29	3	2	15	3		SO	Valerie	1995-07-16
218	859	159	13	37	2	37	3	2	8	2		Valerie	1995-07-16	
219	859	159	14	37	2	30	3	0				SO	Valerie	1995-07-16
220	859	159	15	38	2	26	3	1	22	4		SO	Valerie	1995-07-16
221	859	159	16	40	2	30	3	1	25	3		Valerie	1995-07-16	
222	859	159	19	37	2	37	4	2	29	4		SO	Valerie	1995-07-16
223	859	159	20	33	1	29	3	2	17	3		Valerie	1995-07-16	
224	859	162	1	36	2	39	4	3				SO	Valerie	1995-07-16
225	859	162	2	34	2	33	3	1	31	4		SO	Valerie	1995-07-16
226	859	162	3	33	2	26	3	2	11	3		Valerie	1995-07-16	
227	859	162	4	34	1	26	2	2	5	2		Valerie	1995-07-16	
228	859	162	5	36	2	25	3	0				Valerie	1995-07-16	
229	859	162	6	35	2	38	3	3				Valerie	1995-07-16	
230	859	162	7	37	2	45	3	3				Valerie	1995-07-16	
231	859	162	8	37	1	27	3	2	6	2		SO	Valerie	1995-07-16
232	859	162	9	38	1	30	3	1	28	4		Valerie	1995-07-16	
233	859	162	10	36	2	25	4	1	29	3		Valerie	1995-07-16	
234	859	162	11	31	1	26	4	2	11	3		SO	Valerie	1995-07-16
235	859	162	12	34	2	31	3	2	9	3		SO	Valerie	1995-07-16
236	859	162	13	36	2	37	3	0				Valerie	1995-07-16	
237	859	162	14	31	1	26	3	0				Valerie	1995-07-16	
238	859	162	15	33	1	33	3	0				Valerie	1995-07-16	
239	859	162	16	36	2	31	3	1	16	3		SO	Valerie	1995-07-16
240	859	162	17	35	2	27	3	1	18	3		SO	Valerie	1995-07-16
241	859	162	18	35	1	28	3	2	26	3		Valerie	1995-07-16	
242	859	162	19	34	1	32	3	0				SO	Valerie	1995-07-16
243	859	162	20	33	1	34	3	2	5	2		Valerie	1995-07-16	
245	3770	10	62	39	1	30	3	2	2	1		Valerie	2013-06-01	
246	3770	10	63	37	1	24	3	1	14	3		Valerie	2013-06-01	
247	3770	10	64	38	2	27	3	2	11	2		Valerie	2013-06-01	
248	3770	10	68	38	1	27	3	2	19	4		Valerie	2013-06-01	
249	3770	10	69	35	1	26	3	2	4	2		SO	Valerie	2013-06-01

250	3770	10	70	40	2	28	4	1	20	4	48		Valerie	2013-06-01
251	3770	10	71	38	2	31	3	1	43	3	74	SO	Valerie	2013-06-01
252	3770	10	72	42	1	29	3	2	15	3	44		Valerie	2013-06-01
253	3770	10	73	40	2	28	4	2	19	3	47		Valerie	2013-06-01
254	3770	10	74	41	2	28	3	2	7	1	35		Valerie	2013-06-01
255	3770	10	75	39	2	28	3	2	17	2	45	SO	Valerie	2013-06-01
256	3770	10	76	39	2	32	3	1	21	4	53	SO	Valerie	2013-06-01
258	3770	19	8	42	1	35	3	1	36	3	71		Ghost/Whales	2013-06-04
259	3770	19	12	39	2	27	3	0			27		Ghost/Whales	2013-06-04
260	3770	19	13	40	2	32	4	1	60	4	92		Ghost/Whales	2013-06-04
261	3770	19	14	38	1	45	4	3			45		Ghost/Whales	2013-06-04
262	3770	19	15	34	1	28	4	0			28		Ghost/Whales	2013-06-04
263	3770	19	17	38	1	38	4	3			38	SO	Ghost/Whales	2013-06-04
264	3770	19	18	39	1	35	3	1	33	3	68		Ghost/Whales	2013-06-04
265	3770	19	21	36	1	27	3	2	5	2	32		Ghost/Whales	2013-06-04
266	3770	19	23	37	1	30	3	1	5	2	35		Ghost/Whales	2013-06-04
268	3770	19	33	41	2	36	4	1	17	3	53		Ghost/Whales	2013-06-04
269	3770	19	46	39	2	27	3	2	4	2	31		Ghost/Whales	2013-06-04
270	3770	19	54	41	2	27	3	2	22	3	49		Ghost/Whales	2013-06-04
271	3770	19	64	39	1	36	3	2	16	3	52		Ghost/Whales	2013-06-04
272	3770	19	66	41	1	37	3	1	66	4	103		Ghost/Whales	2013-06-04
273	3770	19	71	43	2	34	3	2	5	1	39		Ghost/Whales	2013-06-04
274	3770	19	78	40	2	51	4	3			51		Ghost/Whales	2013-06-04
275	3770	19	79	41	2	32	4	2	10	3	42		Ghost/Whales	2013-06-04
276	3770	24	3	41	2	40	3	3			40		Ghost/Whales	2013-06-05
277	3770	24	4	34	1	35	4	0			35		Ghost/Whales	2013-06-05
279	3770	24	27	40	2	31	3	2	27	4	58		Ghost/Whales	2013-06-05
280	3770	24	28	37	2	29	3	0			29		Ghost/Whales	2013-06-05
281	3770	24	32	43	2	33	4	2	40	3	73	SO	Ghost/Whales	2013-06-05
282	3770	24	34	37	1	34	3	0			34		Ghost/Whales	2013-06-05
283	3770	24	38	36	1	34	4	0			34		Ghost/Whales	2013-06-05
284	3770	24	40	40	1	36	4	2	17	3	53		Ghost/Whales	2013-06-05
285	3770	24	41	41	2	39	3	3			39		Ghost/Whales	2013-06-05
286	3770	24	49	38	2	29	3	0			29		Ghost/Whales	2013-06-05
287	3770	24	52	42	2	35	4	1	57	3	92		Ghost/Whales	2013-06-05
288	3770	24	54	39	2	34	3	2	2	1	36		Ghost/Whales	2013-06-05
289	3770	24	55	40	2	36	3	2	3	2	39		Ghost/Whales	2013-06-05
291	3770	24	66	39	2	30	3	2	16	3	46		Ghost/Whales	2013-06-05
292	3770	24	72	41	2	27	4	2	21	4	48		Ghost/Whales	2013-06-05
293	3770	24	74	38	1	37	4	0			37		Ghost/Whales	2013-06-05
294	3770	24	78	38	2	44	3	3			44	SO	Ghost/Whales	2013-06-05
295	3770	60	5	36	2	31	3	1	7	2	38		Valerie	2013-06-17
296	3770	60	7	41	2	38	3	2	25	3	63		Valerie	2013-06-17
297	3770	60	20	42	1	28	4	1	21	2	49	SO	Valerie	2013-06-17
298	3770	60	24	38	2	35	4	1	10	3	45		Valerie	2013-06-17
299	3770	60	29	30	1	28	3	0			28		Valerie	2013-06-17
300	3770	60	30	37	1	32	4	2	10	3	42	SO	Valerie	2013-06-17
301	3770	60	35	42	2	34	3	2	18	3	52		Valerie	2013-06-17
302	3770	60	40	41	2	32	4	1	44	3	76		Valerie	2013-06-17
303	3770	60	43	32	1	24	3	0			24		Valerie	2013-06-17
304	3770	60	44	44	2	34	4	2	41	3	75		Valerie	2013-06-17
305	3770	60	46	34	2	28	4	0			28		Valerie	2013-06-17
306	3770	69	5	38	1	30	4	2	9	3	39		Valerie	2013-06-20
307	3770	69	9	45	1	37	4	1	85	4	122		Valerie	2013-06-20
308	3770	69	25	38	2	32	3	1	12	3	44		Valerie	2013-06-20
309	3770	69	29	36	1	30	3	1	14	3	44		Valerie	2013-06-20
310	3770	69	32	37	2	28	3	2	13	4	41	SO	Valerie	2013-06-20
311	3770	69	33	34	1	29	3	1	17	3	46		Valerie	2013-06-20
312	3770	69	39	37	1	28	4	1	9	2	37		Valerie	2013-06-20
313	3770	69	41	37	1	30	2	1	11	2	41		Valerie	2013-06-20
314	3770	69	43	35	1	25	4	1	11	2	36		Valerie	2013-06-20
315	3770	69	45	36	1	27	3	1	11	3	38		Valerie	2013-06-20
316	3770	69	48	36	1	32	3	2	11	3	43		Valerie	2013-06-20

317	3770	69	50	33	1	25	3	2	5	2	30	SO	Valerie	2013-06-20
318	3770	69	52	41	2	31	3	1	20	3	51		Valerie	2013-06-20
319	3770	69	55	36	1	26	4	2	10	2	36		Valerie	2013-06-20
320	3770	69	60	39	2	32	3	1	12	3	44		Valerie	2013-06-20
321	3770	69	62	37	1	31	2	2	11	3	42		Valerie	2013-06-20
322	3770	69	68	40	2	32	3	2	23	4	55		Valerie	2013-06-20
323	3770	69	72	41	2	61	3	3			61	SO	Valerie	2013-06-20
324	3770	69	73	34	2	25	3	0			25		Valerie	2013-06-20
325	3770	78	4	38	2	34	3	2	19	4	53		Ghost/Whales	2013-06-22
326	3770	78	5	39	2	25	3	1	39	4	64		Ghost/Whales	2013-06-22
327	3770	78	13	41	2	33	3	2	42	3	75		Ghost/Whales	2013-06-22
328	3770	78	14	48	2	154	4	3			154		Ghost/Whales	2013-06-22
329	3770	78	18	42	2	29	4	2	21	4	50		Ghost/Whales	2013-06-22
330	3770	78	19	36	1	28	4	1	23	4	51	SO	Ghost/Whales	2013-06-22
331	3770	78	22	43	2	41	4	3			41		Ghost/Whales	2013-06-22
332	3770	78	23	43	2	48	3	3			48		Ghost/Whales	2013-06-22
333	3770	78	27	45	2	26	4	2	34	4	60		Ghost/Whales	2013-06-22
335	3770	78	35	47	2	39	3	2	121	4	160	SO	Ghost/Whales	2013-06-22
336	3770	78	39	44	2	38	4	2	116	4	154		Ghost/Whales	2013-06-22
337	3770	78	50	35	1	32	4	3			32		Ghost/Whales	2013-06-22
339	3770	78	60	38	1	39	4	3			39		Ghost/Whales	2013-06-22
340	3770	78	65	50	2	31	4	1	114	4	145		Ghost/Whales	2013-06-22
341	3770	78	66	41	2	33	3	2	81	3	114		Ghost/Whales	2013-06-22
342	3770	78	70	48	2	36	3	1	75	3	111	SO	Ghost/Whales	2013-06-22
343	3770	78	78	38	2	42	4	3			42		Ghost/Whales	2013-06-22
344	3770	78	79	45	2	75	4	3			75	SO	Ghost/Whales	2013-06-22
345	3770	83	5	39	1	36	3	2	65	3	101		Ghost/Whales	2013-06-23
346	3770	83	6	38	1	38	3	2	10	2	48		Ghost/Whales	2013-06-23
347	3770	83	8	37	1	28	3	2	21	3	49		Ghost/Whales	2013-06-23
348	3770	83	11	38	2	24	3	2	26	4	50		Ghost/Whales	2013-06-23
350	3770	83	34	36	1	31	3	2	10	3	41		Ghost/Whales	2013-06-23
351	3770	83	37	40	1	45	3	3			45		Ghost/Whales	2013-06-23
352	3770	83	39	40	2	33	3	1	26	3	59	SO	Ghost/Whales	2013-06-23
353	3770	83	40	33	1	32	4	0			32		Ghost/Whales	2013-06-23
354	3770	83	43	37	1	30	4	2	30	4	60		Ghost/Whales	2013-06-23
355	3770	83	54	44	1	35	4	1	49	3	84		Ghost/Whales	2013-06-23
356	3770	83	59	37	1	33	3	3			33		Ghost/Whales	2013-06-23
357	3770	83	61	41	2	29	4	2	29	3	58	SO	Ghost/Whales	2013-06-23
358	3770	83	63	40	1	28	3	1	47	3	75		Ghost/Whales	2013-06-23
359	3770	83	64	41	1	27	4	1	29	4	56		Ghost/Whales	2013-06-23
360	3770	83	65	40	2	44	4	3			44		Ghost/Whales	2013-06-23
361	3770	83	68	41	2	33	3	2	17	3	50		Ghost/Whales	2013-06-23
362	3770	83	72	42	1	30	3	1	43	3	73		Ghost/Whales	2013-06-23
363	3770	83	77	36	1	26	3	2	12	3	38		Ghost/Whales	2013-06-23
364	3770	83	79	38	1	29	4	1	13	3	42		Ghost/Whales	2013-06-23
365	3770	92	9	44	1	39	3	1	33	4	72		Ghost/Whales	2013-06-25
366	3770	92	12	41	1	27	3	1	31	3	58		Ghost/Whales	2013-06-25
367	3770	92	13	42	2	33	3	1	48	4	81	SO	Ghost/Whales	2013-06-25
368	3770	92	14	43	2	29	3	2	18	3	47		Ghost/Whales	2013-06-25
369	3770	92	16	36	1	25	3	1	32	4	57		Ghost/Whales	2013-06-25
370	3770	92	20	43	1	32	2	1	108	4	140		Ghost/Whales	2013-06-25
371	3770	92	24	42	2	35	3	2	68	3	103		Ghost/Whales	2013-06-25
372	3770	92	30	45	1	116	4	3			116		Ghost/Whales	2013-06-25
373	3770	92	35	40	1	36	3	1	46	3	82		Ghost/Whales	2013-06-25
374	3770	92	42	36	2	29	3	3			29		Ghost/Whales	2013-06-25
375	3770	92	48	42	2	27	4	2	14	3	41		Ghost/Whales	2013-06-25
376	3770	92	50	39	1	32	3	1	33	3	65		Ghost/Whales	2013-06-25
377	3770	92	53	40	2	40	3	3			40		Ghost/Whales	2013-06-25
378	3770	92	62	38	2	35	3	1	20	3	55		Ghost/Whales	2013-06-25
379	3770	92	65	39	1	27	3	1	28	4	55		Ghost/Whales	2013-06-25
380	3770	92	66	38	2	35	3	2	38	4	73		Ghost/Whales	2013-06-25
381	3770	92	70	45	1	29	3	2	111	3	140		Ghost/Whales	2013-06-25
382	3770	92	71	38	1	21	3	1	26	3	47		Ghost/Whales	2013-06-25

383	3770	92	73	37	1	28	4	1	10	3	38		Ghost/Whales	2013-06-25
384	3770	92	75	42	2	40	4	2	48	4	88	SO	Ghost/Whales	2013-06-25
385	3770	102	1	44	2	34	3	1	54	4	88		Ghost/Whales	2013-06-26
386	3770	102	3	42	2	34	3	2	37	3	71		Ghost/Whales	2013-06-26
387	3770	102	4	38	1	27	3	2	12	3	39		Ghost/Whales	2013-06-26
388	3770	102	8	44	2	37	4	1	135	4	172		Ghost/Whales	2013-06-26
389	3770	102	10	37	1	25	4	0			25		Ghost/Whales	2013-06-26
390	3770	102	11	40	1	37	3	1	35	4	72		Ghost/Whales	2013-06-26
391	3770	102	17	43	1	27	4	2	79	4	106	SO	Ghost/Whales	2013-06-26
392	3770	102	20	39	1	32	3	2	21	4	53		Ghost/Whales	2013-06-26
393	3770	102	25	40	1	32	3	2	37	2	69		Ghost/Whales	2013-06-26
394	3770	102	28	45	2	32	3	1	100	4	132		Ghost/Whales	2013-06-26
395	3770	102	29	34	1	29	3	0			29		Ghost/Whales	2013-06-26
396	3770	102	31	41	1	28	4	1	87	4	115		Ghost/Whales	2013-06-26
397	3770	102	37	38	1	27	3	1	28	3	55		Ghost/Whales	2013-06-26
398	3770	102	45	39	2	48	4	3			48		Ghost/Whales	2013-06-26
399	3770	102	50	40	2	38	4	1	30	3	68		Ghost/Whales	2013-06-26
400	3770	102	62	42	1	31	4	1	77	4	108		Ghost/Whales	2013-06-26
401	3770	102	72	41	2	32	3	2	114	4	146		Ghost/Whales	2013-06-26
402	3770	102	76	33	1	26	3	2	8	2	34		Ghost/Whales	2013-06-26
403	3770	102	78	41	2	31	3	2	20	3	51		Ghost/Whales	2013-06-26
404	3770	102	79	36	1	36	3	2	4	2	40		Ghost/Whales	2013-06-26
406	3770	105	2	42	2	32	4	2	44	4	76		Ghost/Whales	2013-06-28
407	3770	105	7	39	2	29	3	3			29		Ghost/Whales	2013-06-28
408	3770	105	9	46	2	31	4	2	58	4	89		Ghost/Whales	2013-06-28
409	3770	105	15	41	2	43	4	3			43		Ghost/Whales	2013-06-28
410	3770	105	18	38	1	63	4	3			63		Ghost/Whales	2013-06-28
411	3770	105	26	40	2	29	3	2	17	3	46		Ghost/Whales	2013-06-28
412	3770	105	29	49	2	36	3	2	131	4	167	SO	Ghost/Whales	2013-06-28
413	3770	105	34	37	1	35	3	2	2	1	37		Ghost/Whales	2013-06-28
414	3770	105	35	44	2	39	4	2	47	3	86		Ghost/Whales	2013-06-28
415	3770	105	36	43	2	29	3	2	68	4	97		Ghost/Whales	2013-06-28
416	3770	105	38	39	2	31	3	2	7	2	38	SO	Ghost/Whales	2013-06-28
417	3770	105	46	40	2	31	3	2	25	3	56		Ghost/Whales	2013-06-28
418	3770	105	50	43	2	32	3	1	19	3	51		Ghost/Whales	2013-06-28
419	3770	105	55	42	2	46	3	3			46		Ghost/Whales	2013-06-28
420	3770	105	57	43	1	31	4	1	34	4	65		Ghost/Whales	2013-06-28
421	3770	105	67	40	2	43	3	3			43		Ghost/Whales	2013-06-28
422	3770	105	71	36	1	27	3	2	6	2	33		Ghost/Whales	2013-06-28
423	3770	105	73	37	2	31	3	1	14	3	45		Ghost/Whales	2013-06-28
424	3770	113	1	41	1	28	4	2	10	2	38		Ghost/Whales	2013-06-29
425	3770	113	5	40	1	27	4	2	25	3	52	SO	Ghost/Whales	2013-06-29
426	3770	113	6	40	2	30	4	2	8	2	38	SO	Ghost/Whales	2013-06-29
427	3770	113	16	39	1	36	3	1	31	3	67		Ghost/Whales	2013-06-29
428	3770	113	17	40	1	35	3	2	23	3	58		Ghost/Whales	2013-06-29
429	3770	113	19	45	2	32	4	2	140	4	172		Ghost/Whales	2013-06-29
430	3770	113	20	37	1	26	3	2	6	2	32		Ghost/Whales	2013-06-29
431	3770	113	26	43	1	37	4	2	46	4	83	SO	Ghost/Whales	2013-06-29
432	3770	113	29	38	1	34	3	3			34		Ghost/Whales	2013-06-29
433	3770	113	34	40	1	28	3	2	10	3	38		Ghost/Whales	2013-06-29
434	3770	113	47	47	1	110	4	3			110		Ghost/Whales	2013-06-29
435	3770	113	49	42	1	36	3	2	23	4	59		Ghost/Whales	2013-06-29
436	3770	113	50	43	2	36	4	1	42	4	78		Ghost/Whales	2013-06-29
437	3770	113	51	42	2	31	4	2	78	3	109		Ghost/Whales	2013-06-29
438	3770	113	52	47	2	37	3	1	55	4	92		Ghost/Whales	2013-06-29
439	3770	113	58	35	1	22	3	1	8	2	30		Ghost/Whales	2013-06-29
440	3770	113	59	46	2	107	4	3			107		Ghost/Whales	2013-06-29
441	3770	113	65	47	2	34	4	2	67	4	101	SO	Ghost/Whales	2013-06-29
442	3770	113	75	37	1	42	3	3			42		Ghost/Whales	2013-06-29
443	3770	113	79	37	2	28	4	0			28		Ghost/Whales	2013-06-29
444	3813	1	61	37	1	25	3	2	31	2	56		Ghost/Whales	2013-07-11
445	3813	1	62	37	1	31	4	1	2	1	33		Ghost/Whales	2013-07-11
446	3813	1	63	45	2	34	4	2	148	4	182	SO	Ghost/Whales	2013-07-11

447	3813	1	64	43	2	32	4	1	40	4	72		Ghost/Whales	2013-07-11
448	3813	1	65	37	1	34	3	2	63	4	97	SO	Ghost/Whales	2013-07-11
449	3813	1	66	43	2	31	4	2	56	4	87	SO	Ghost/Whales	2013-07-11
450	3813	1	67	43	2	30	3	2	83	4	113		Ghost/Whales	2013-07-11
451	3813	1	68	37	2	25	3	2	24	3	49		Ghost/Whales	2013-07-11
452	3813	1	69	41	2	35	3	1	31	3	66		Ghost/Whales	2013-07-11
453	3813	1	70	31	1	27	3	0			27		Ghost/Whales	2013-07-11
454	3813	1	71	43	2	34	3	2	24	3	58		Ghost/Whales	2013-07-11
455	3813	1	73	36	2	32	3	1	33	3	65		Ghost/Whales	2013-07-11
456	3813	1	74	42	1	31	3	2	82	4	113		Ghost/Whales	2013-07-11
457	3813	1	75	36	2	28	3	2	44	4	72		Ghost/Whales	2013-07-11
458	3813	1	76	38	2	41	3	3			41		Ghost/Whales	2013-07-11
459	3813	1	77	36	2	27	3	0			27		Ghost/Whales	2013-07-11
460	3813	1	78	38	1	30	3	0			30		Ghost/Whales	2013-07-11
461	3813	1	79	37	2	25	4	2	5	2	30	SO	Ghost/Whales	2013-07-11
462	3813	1	80	38	2	33	3	2	26	3	59	SO	Ghost/Whales	2013-07-11
463	3813	5	1	43	1	38	4	2	121	4	159		Ghost/Whales	2013-07-11
464	3813	5	2	35	1	30	4	1	19	3	49		Ghost/Whales	2013-07-11
465	3813	5	3	35	1	31	2	2	18	3	49		Ghost/Whales	2013-07-11
466	3813	5	4	38	1	30	3	1	37	3	67		Ghost/Whales	2013-07-11
467	3813	5	5	40	1	38	3	1	54	3	92		Ghost/Whales	2013-07-11
468	3813	5	6	39	1	27	3	2	11	2	38		Ghost/Whales	2013-07-11
469	3813	5	7	35	1	25	3	1	13	2	38		Ghost/Whales	2013-07-11
470	3813	5	8	44	2	32	3	1	58	3	90	SO	Ghost/Whales	2013-07-11
471	3813	5	9	36	2	38	3	2	9	2	47		Ghost/Whales	2013-07-11
472	3813	5	10	29	1	34	2	2	2	1	36		Ghost/Whales	2013-07-11
473	3813	5	11	36	1	35	4	2	17	3	52		Ghost/Whales	2013-07-11
474	3813	5	12	37	1	33	3	1	20	3	53		Ghost/Whales	2013-07-11
475	3813	5	13	40	1	26	3	2	40	3	66		Ghost/Whales	2013-07-11
476	3813	5	14	38	1	28	3	2	9	2	37		Ghost/Whales	2013-07-11
477	3813	5	15	46	2	30	3	1	116	4	146		Ghost/Whales	2013-07-11
478	3813	5	16	38	2	31	4	2	5	2	36		Ghost/Whales	2013-07-11
479	3813	5	17	36	1	31	3	0			31	SO	Ghost/Whales	2013-07-11
480	3813	5	18	36	1	29	3	2	10	2	39		Ghost/Whales	2013-07-11
481	3813	5	19	37	1	33	4	2	6	2	39	SO	Ghost/Whales	2013-07-11
482	3813	5	20	34	1	27	3	1	11	3	38		Ghost/Whales	2013-07-11
483	3813	10	1	42	2	29	3	2	26	4	55		Ghost/Whales	2013-07-12
484	3813	10	11	40	1	35	4	1	46	4	81		Ghost/Whales	2013-07-12
485	3813	10	14	37	1	32	3	1	35	4	67		Ghost/Whales	2013-07-12
486	3813	10	15	39	1	37	3	3			37	SO	Ghost/Whales	2013-07-12
488	3813	10	18	39	1	32	3	1	50	3	82		Ghost/Whales	2013-07-12
489	3813	12	2	40	2	32	3	2	6	2	38		Ghost/Whales	2013-07-12
490	3813	12	4	34	1	31	3	0			31		Ghost/Whales	2013-07-12
491	3813	12	7	43	1	36	3	2	68	4	104		Ghost/Whales	2013-07-12
492	3813	12	16	36	1	24	4	2	7	2	31		Ghost/Whales	2013-07-12
493	3813	12	35	35	1	26	3	2	2	1	28		Ghost/Whales	2013-07-12
494	3813	12	36	39	2	28	3	2	38	3	66		Ghost/Whales	2013-07-12
495	3813	12	37	39	1	25	3	2	5	1	30	SO	Ghost/Whales	2013-07-12
496	3813	12	40	38	1	35	3	2	35	4	70		Ghost/Whales	2013-07-12
497	3813	12	45	37	1	35	3	0			35		Ghost/Whales	2013-07-12
498	3813	12	48	45	1	27	3	2	104	4	131		Ghost/Whales	2013-07-12
499	3813	12	53	34	1	28	3	0			28		Ghost/Whales	2013-07-12
500	3813	12	56	40	2	33	4	2	17	3	50		Ghost/Whales	2013-07-12
501	3813	12	64	41	2	36	4	1	72	4	108		Ghost/Whales	2013-07-12
502	3813	12	65	35	2	32	4	0			32		Ghost/Whales	2013-07-12
503	3813	12	69	41	1	30	3	1	56	4	86		Ghost/Whales	2013-07-12
504	3813	12	72	41	2	25	3	1	10	2	35		Ghost/Whales	2013-07-12
505	3813	12	74	37	2	27	4	2	9	3	36	SO	Ghost/Whales	2013-07-12
506	3813	12	76	34	1	27	3	0			27		Ghost/Whales	2013-07-12
507	3813	17	6	34	1	29	2	1	12	3	41	SO	Valerie	2013-07-13
508	3813	17	14	33	1	26	4	2	7	2	33		Valerie	2013-07-13
509	3813	17	24	36	1	25	3	1	34	3	59		Valerie	2013-07-13
510	3813	17	27	39	1	28	3	1	30	4	58		Valerie	2013-07-13

511	3813	17	34	39	1	28	4	1	42	3	70		Valerie	2013-07-13
512	3813	17	38	43	1	30	4	1	43	4	73		Valerie	2013-07-13
513	3813	17	40	42	1	35	4	1	88	4	123		Valerie	2013-07-13
514	3813	17	42	37	1	34	4	1	45	4	79		Valerie	2013-07-13
515	3813	17	43	39	1	27	4	1	22	4	49		Valerie	2013-07-13
516	3813	17	44	39	1	43	3	3			43	SO	Valerie	2013-07-13
517	3813	17	49	33	1	22	3	2	5	1	27		Valerie	2013-07-13
518	3813	17	51	33	1	22	3	2	6	2	28		Valerie	2013-07-13
519	3813	17	53	34	1	28	3	2	5	1	33		Valerie	2013-07-13
520	3813	17	60	35	1	33	2	2	26	3	59		Valerie	2013-07-13
521	3813	17	63	35	1	25	3	1	10	2	35		Valerie	2013-07-13
522	3813	17	64	35	1	23	3	2	6	1	29		Valerie	2013-07-13
523	3813	17	65	34	1	23	2	1	4	1	27		Valerie	2013-07-13
524	3813	17	70	36	1	28	3	1	10	2	38		Valerie	2013-07-13
525	3813	17	72	40	1	22	3	1	26	3	48	SO	Valerie	2013-07-13
526	3813	17	79	31	1	29	3	0			29		Valerie	2013-07-13
527	3813	48	1	41	1	36	4	1	77	3	113		Ghost/Whales	2013-07-21
528	3813	48	15	34	1	27	3	2	20	3	47		Ghost/Whales	2013-07-21
529	3813	48	16	39	2	24	4	1	36	3	60		Ghost/Whales	2013-07-21
530	3813	48	19	37	2	24	3	2	3	1	27		Ghost/Whales	2013-07-21
531	3813	48	20	44	2	31	3	2	36	3	67		Ghost/Whales	2013-07-21
532	3813	48	26	46	2	36	3	2	48	3	84		Ghost/Whales	2013-07-21
533	3813	48	33	38	2	34	4	2	3	1	37		Ghost/Whales	2013-07-21
534	3813	48	39	42	2	34	3	1	17	3	51		Ghost/Whales	2013-07-21
535	3813	48	43	43	2	37	4	2	25	3	62		Ghost/Whales	2013-07-21
536	3813	48	55	40	2	36	4	3			36		Ghost/Whales	2013-07-21
537	3813	48	56	37	1	35	4	1	24	4	59		Ghost/Whales	2013-07-21
538	3813	48	59	39	2	48	4	3			48		Ghost/Whales	2013-07-21
539	3813	48	63	45	2	36	3	2	45	3	81	SO	Ghost/Whales	2013-07-21
540	3813	48	68	36	1	32	3	2	6	1	38		Ghost/Whales	2013-07-21
541	3813	48	71	47	2	34	4	1	151	4	185	SO	Ghost/Whales	2013-07-21
542	3813	48	72	37	1	34	4	3			34	SO	Ghost/Whales	2013-07-21
543	3813	48	74	37	1	36	3	3			36	SO	Ghost/Whales	2013-07-21
544	3813	48	75	38	1	36	3	2	29	4	65		Ghost/Whales	2013-07-21
545	3813	48	77	37	2	34	2	0			34	SO	Ghost/Whales	2013-07-21
546	3813	48	79	45	2	29	3	2	72	4	101		Ghost/Whales	2013-07-21
547	3813	54	2	35	1	26	4	1	7	2	33		Valerie	2013-07-22
548	3813	54	15	35	1	26	3	1	11	2	37		Valerie	2013-07-22
549	3813	54	16	35	1	25	3	2	14	2	39		Valerie	2013-07-22
550	3813	54	17	35	1	28	3	1	10	2	38		Valerie	2013-07-22
551	3813	54	20	39	1	28	3	1	13	2	41		Valerie	2013-07-22
552	3813	54	26	33	2	25	2	2	2	1	27	SO	Valerie	2013-07-22
554	3813	54	31	35	1	22	3	1	9	1	31	SO	Valerie	2013-07-22
555	3813	54	32	34	2	32	3	0			32		Valerie	2013-07-22
556	3813	54	34	42	2	31	4	2	61	4	92	SO	Valerie	2013-07-22
557	3813	54	37	36	1	32	3	0			32	SO	Valerie	2013-07-22
558	3813	54	56	33	2	28	3	0			28		Valerie	2013-07-22
559	3813	54	59	37	2	26	4	2	5	2	31	SO	Valerie	2013-07-22
560	3813	54	66	38	1	27	2	2	22	3	49		Valerie	2013-07-22
561	3813	54	67	37	2	26	3	1	33	3	59	SO	Valerie	2013-07-22
562	3813	54	68	39	2	37	3	3			37		Valerie	2013-07-22
563	3813	54	71	38	1	23	2	1	53	3	76		Valerie	2013-07-22
564	3813	54	74	38	2	31	3	2	15	2	46		Valerie	2013-07-22
565	3813	54	75	39	2	26	3	1	11	2	37		Valerie	2013-07-22
566	3813	54	76	38	2	31	4	0			31		Valerie	2013-07-22
567	4126	2	1	42	2	27	3	2	19	3	46	SO	Ghost/Whales	2014-06-03
568	4126	2	2	42	2	26	3	2	38	4	64		Ghost/Whales	2014-06-03
569	4126	2	3	36	2	25	3	2	3	1	28		Ghost/Whales	2014-06-03
570	4126	2	4	34	1	26	4	1	37	4	63		Ghost/Whales	2014-06-03
571	4126	2	5	33	2	28	3	2	12	3	40	SO	Ghost/Whales	2014-06-03
572	4126	2	6	37	2	33	3	0			33		Ghost/Whales	2014-06-03
573	4126	2	7	44	2	38	2	1	125	3	163		Ghost/Whales	2014-06-03
574	4126	2	8	37	2	47	3	3			47		Ghost/Whales	2014-06-03

575	4126	2	9	35	2	36	3	2	13	3	49	Ghost/Whales	2014-06-03	
576	4126	2	10	35	1	47	3	3			47	Ghost/Whales	2014-06-03	
577	4126	2	11	36	1	30	2	1	52	3	82	Ghost/Whales	2014-06-03	
578	4126	2	12	35	2	27	3	2	13	3	40	Ghost/Whales	2014-06-03	
579	4126	2	13	34	1	27	3	2	9	3	36	Ghost/Whales	2014-06-03	
580	4126	2	14	38	1	27	4	1	85	3	112	Ghost/Whales	2014-06-03	
581	4126	2	15	39	2	30	3	2	18	4	48	SO	Ghost/Whales	2014-06-03
582	4126	2	16	38	1	32	3	2	20	4	52	Ghost/Whales	2014-06-03	
583	4126	2	17	41	2	28	3	2	16	3	44	SO	Ghost/Whales	2014-06-03
584	4126	2	18	40	2	26	4	2	46	4	72	SO	Ghost/Whales	2014-06-03
585	4126	2	19	40	2	40	3	3			40	Ghost/Whales	2014-06-03	
586	4126	2	20	40	1	36	3	1	68	3	104	SO	Ghost/Whales	2014-06-03
587	4126	8	1	34	1	29	3	2	7	2	36	Ghost/Whales	2014-06-05	
588	4126	8	2	44	2	34	2	1	25	3	59	Ghost/Whales	2014-06-05	
589	4126	8	3	46	2	30	2	1	135	4	165	Ghost/Whales	2014-06-05	
590	4126	8	4	40	2	31	3	2	32	4	63	SO	Ghost/Whales	2014-06-05
591	4126	8	5	36	1	24	3	1	17	3	41	Ghost/Whales	2014-06-05	
592	4126	8	6	37	1	34	3	2	13	3	47	SO	Ghost/Whales	2014-06-05
593	4126	8	7	33	1	27	2	0			27	SO	Ghost/Whales	2014-06-05
594	4126	8	8	40	2	88	4	3			88	Ghost/Whales	2014-06-05	
595	4126	8	9	44	2	33	4	1	52	4	85	Ghost/Whales	2014-06-05	
596	4126	8	10	37	1	29	3	2	43	3	72	Ghost/Whales	2014-06-05	
597	4126	8	11	42	1	31	4	1	150	4	181	Ghost/Whales	2014-06-05	
598	4126	8	12	42	1	28	3	2	174	4	202	Ghost/Whales	2014-06-05	
599	4126	8	13	42	1	35	3	1	115	3	150	Ghost/Whales	2014-06-05	
600	4126	8	14	42	2	37	3	2	16	3	53	Ghost/Whales	2014-06-05	
601	4126	8	15	41	2	27	3	2	18	3	45	SO	Ghost/Whales	2014-06-05
602	4126	8	16	48	2	29	4	2	136	4	165	Ghost/Whales	2014-06-05	
603	4126	8	17	37	1	36	3	1	52	3	88	Ghost/Whales	2014-06-05	
604	4126	8	18	37	1	33	3	1	60	3	93	Ghost/Whales	2014-06-05	
605	4126	8	19	37	2	23	3	1	34	3	57	Ghost/Whales	2014-06-05	
606	4126	8	20	40	2	27	3	1	41	3	68	Ghost/Whales	2014-06-05	
607	4126	13	1	40	2	32	2	1	31	3	63	Valerie	2014-06-06	
608	4126	13	2	36	2	34	3	2	8	2	42	Valerie	2014-06-06	
609	4126	13	3	37	1	38	3	1	29	3	67	Valerie	2014-06-06	
610	4126	13	4	34	1	28	3	1	4	2	32	Valerie	2014-06-06	
611	4126	13	5	33	1	22	3	1	11	2	33	Valerie	2014-06-06	
612	4126	13	6	42	2	29	3	1	29	3	58	Valerie	2014-06-06	
613	4126	13	7	37	1	28	3	1	33	4	61	Valerie	2014-06-06	
614	4126	13	8	42	1	32	4	1	58	3	90	Valerie	2014-06-06	
615	4126	13	9	34	2	37	3	3			37	Valerie	2014-06-06	
616	4126	13	10	38	2	28	2	2	2	1	30	Valerie	2014-06-06	
617	4126	13	11	42	2	29	3	1	42	4	71	Valerie	2014-06-06	
618	4126	13	12	36	2	32	2	0			32	Valerie	2014-06-06	
619	4126	13	13	35	1	23	4	0			23	Valerie	2014-06-06	
620	4126	13	14	33	1	29	2	1	11	2	40	Valerie	2014-06-06	
621	4126	13	15	41	2	28	3	1	61	3	89	Valerie	2014-06-06	
622	4126	13	16	34	1	27	4	0			27	SO	Valerie	2014-06-06
623	4126	13	17	41	2	43	4	3			43	SO	Valerie	2014-06-06
624	4126	13	18	43	2	30	3	1	23	3	53	Valerie	2014-06-06	
625	4126	13	19	35	1	34	4	3			34	Valerie	2014-06-06	
626	4126	13	20	37	1	45	4	3			45	Valerie	2014-06-06	
627	4126	19	1	37	2	27	3	2	10	2	37	Valerie	2014-06-08	
628	4126	19	2	40	1	28	4	2	25	4	53	Valerie	2014-06-08	
629	4126	19	3	36	1	26	3	1	24	3	50	Valerie	2014-06-08	
630	4126	19	4	38	2	32	4	2	15	3	47	Valerie	2014-06-08	
631	4126	19	5	34	1	28	2	1	11	2	39	Valerie	2014-06-08	
632	4126	19	6	33	1	31	3	2	12	2	43	Valerie	2014-06-08	
633	4126	19	7	35	1	25	3	1	10	2	35	Valerie	2014-06-08	
634	4126	19	8	39	1	24	4	2	18	3	42	Valerie	2014-06-08	
635	4126	19	9	31	1	22	4	2	4	1	26	SO	Valerie	2014-06-08
636	4126	19	10	34	1	27	2	1	4	1	31	Valerie	2014-06-08	
637	4126	19	11	32	1	27	3	2	4	1	31	SO	Valerie	2014-06-08

638	4126	19	12	35	1	24	3	0			24	Valerie	2014-06-08	
639	4126	19	13	36	2	26	3	0			26	Valerie	2014-06-08	
640	4126	19	14	43	2	28	4	1	35	4	63	Valerie	2014-06-08	
641	4126	19	15	39	2	30	3	2	8	2	38	Valerie	2014-06-08	
642	4126	19	16	36	1	27	3	2	4	2	31	Valerie	2014-06-08	
643	4126	19	17	36	2	23	3	2	6	2	29	SO	Valerie	2014-06-08
644	4126	19	18	37	2	30	4	2	12	3	42	SO	Valerie	2014-06-08
645	4126	19	19	37	1	32	3	2	18	3	50		Valerie	2014-06-08
646	4126	19	20	32	1	25	2	0			25	SO	Valerie	2014-06-08
647	4126	20	1	38	2	30	3	2	7	2	37		Valerie	2014-06-08
648	4126	20	2	31	1	26	3	0			26		Valerie	2014-06-08
649	4126	20	3	43	1	96	3	3			96		Valerie	2014-06-08
650	4126	20	4	35	2	31	4	0			31		Valerie	2014-06-08
651	4126	20	5	37	2	25	4	2	20	4	45		Valerie	2014-06-08
652	4126	20	6	35	1	25	3	2	15	3	40		Valerie	2014-06-08
653	4126	20	7	38	2	29	2	1	27	4	56		Valerie	2014-06-08
654	4126	20	8	38	2	31	3	3			31		Valerie	2014-06-08
655	4126	20	9	35	1	31	3	3			31	SO	Valerie	2014-06-08
656	4126	20	10	40	2	26	4	2	40	2	66		Valerie	2014-06-08
657	4126	20	11	36	1	32	2	2	4	2	36		Valerie	2014-06-08
658	4126	20	12	40	2	33	3	1	14	3	47		Valerie	2014-06-08
659	4126	20	13	37	2	30	3	2	4	1	34		Valerie	2014-06-08
660	4126	20	14	45	2	27	4	2	93	4	120	SO	Valerie	2014-06-08
661	4126	20	15	40	2	38	3	2	26	4	64		Valerie	2014-06-08
662	4126	20	16	38	2	41	3	3			41		Valerie	2014-06-08
663	4126	20	17	35	2	25	3	0			25		Valerie	2014-06-08
664	4126	20	18	36	2	34	4	0			34	SO	Valerie	2014-06-08
665	4126	20	19	39	2	27	4	2	16	3	43		Valerie	2014-06-08
666	4126	20	20	41	2	34	4	1	26	3	60		Valerie	2014-06-08
667	4142	16	1	35	2	29	4	2	11	3	40		Ghost/Whales	2014-06-27
668	4142	16	2	36	1	36	3	0			36		Ghost/Whales	2014-06-27
669	4142	16	3	38	1	30	3	1	58	3	88		Ghost/Whales	2014-06-27
670	4142	16	4	38	1	34	3	0			34		Ghost/Whales	2014-06-27
671	4142	16	5	41	2	59	3	3			59		Ghost/Whales	2014-06-27
672	4142	16	6	39	2	28	3	2	7	2	35		Ghost/Whales	2014-06-27
673	4142	16	7	37	2	26	2	1	19	2	45		Ghost/Whales	2014-06-27
674	4142	16	8	43	2	32	3	1	63	3	95		Ghost/Whales	2014-06-27
675	4142	16	9	45	2	33	3	1	91	4	124		Ghost/Whales	2014-06-27
676	4142	16	10	35	1	24	4	2	5	2	29		Ghost/Whales	2014-06-27
677	4142	16	11	33	1	35	3	0			35		Ghost/Whales	2014-06-27
678	4142	16	12	39	1	31	3	1	57	3	88		Ghost/Whales	2014-06-27
679	4142	16	13	39	2	27	4	1	36	4	63		Ghost/Whales	2014-06-27
680	4142	16	14	32	1	30	3	0			30		Ghost/Whales	2014-06-27
681	4142	16	15	36	1	30	3	1	12	2	42		Ghost/Whales	2014-06-27
682	4142	16	16	36	1	31	3	2	5	2	36		Ghost/Whales	2014-06-27
683	4142	16	17	37	2	35	4	1	39	4	74		Ghost/Whales	2014-06-27
684	4142	16	18	36	1	26	4	0			26	SO	Ghost/Whales	2014-06-27
685	4142	16	19	39	1	41	3	3			41		Ghost/Whales	2014-06-27
686	4142	16	20	34	1	26	4	2	6	2	32		Ghost/Whales	2014-06-27
687	4142	19	1	39	2	25	4	2	10	2	35		Ghost/Whales	2014-06-28
688	4142	19	2	42	2	33	4	2	62	4	95		Ghost/Whales	2014-06-28
689	4142	19	3	33	1	31	3	0			31		Ghost/Whales	2014-06-28
690	4142	19	4	37	1	42	3	3			42		Ghost/Whales	2014-06-28
691	4142	19	5	38	1	25	4	1	21	3	46	SO	Ghost/Whales	2014-06-28
692	4142	19	6	36	1	32	3	2	16	3	48	SO	Ghost/Whales	2014-06-28
693	4142	19	7	38	2	29	4	2	13	3	42		Ghost/Whales	2014-06-28
694	4142	19	8	42	2	32	3	2	21	3	53		Ghost/Whales	2014-06-28
695	4142	19	9	33	1	25	3	2	4	1	29		Ghost/Whales	2014-06-28
696	4142	19	10	35	2	24	4	2	17	4	41		Ghost/Whales	2014-06-28
697	4142	19	11	37	1	28	3	2	21	3	49		Ghost/Whales	2014-06-28
698	4142	19	12	41	2	32	4	1	52	4	84		Ghost/Whales	2014-06-28
699	4142	19	13	33	1	32	3	2	17	3	49		Ghost/Whales	2014-06-28
700	4142	19	14	38	1	32	3	0			32		Ghost/Whales	2014-06-28

701	4142	19	15	36	2	37	4	2	3	2	40		Ghost/Whales	2014-06-28
702	4142	19	16	41	1	36	4	1	43	4	79		Ghost/Whales	2014-06-28
703	4142	19	17	38	2	28	3	2	21	3	49		Ghost/Whales	2014-06-28
705	4142	19	19	40	1	25	4	1	94	3	119	SO	Ghost/Whales	2014-06-28
706	4142	19	20	34	1	22	3	1	30	3	52		Ghost/Whales	2014-06-28
707	4142	21	1	42	2	30	4	1	54	3	84	SO	Ghost/Whales	2014-06-28
708	4142	21	2	40	1	35	3	2	9	2	44		Ghost/Whales	2014-06-28
709	4142	21	3	41	2	30	3	2	40	4	70		Ghost/Whales	2014-06-28
710	4142	21	4	41	1	35	4	2	51	4	86		Ghost/Whales	2014-06-28
711	4142	21	5	36	1	26	4	2	33	3	59		Ghost/Whales	2014-06-28
712	4142	21	6	40	1	38	3	1	52	3	90		Ghost/Whales	2014-06-28
713	4142	21	7	37	1	32	2	1	39	3	71		Ghost/Whales	2014-06-28
714	4142	21	8	36	1	29	3	1	16	3	45		Ghost/Whales	2014-06-28
715	4142	21	9	36	1	28	3	1	15	3	43		Ghost/Whales	2014-06-28
716	4142	21	10	34	1	31	3	2	18	3	49	SO	Ghost/Whales	2014-06-28
717	4142	21	11	37	1	37	3	3			37		Ghost/Whales	2014-06-28
718	4142	21	12	34	1	25	3	0			25	SO	Ghost/Whales	2014-06-28
719	4142	21	13	39	1	26	3	1	41	2	67		Ghost/Whales	2014-06-28
720	4142	21	14	35	1	34	3	1	24	4	58		Ghost/Whales	2014-06-28
721	4142	21	15	35	1	32	3	1	4	2	36		Ghost/Whales	2014-06-28
722	4142	21	16	41	2	34	4	2	67	4	101		Ghost/Whales	2014-06-28
723	4142	21	17	39	2	33	3	2	21	4	54		Ghost/Whales	2014-06-28
724	4142	21	18	38	1	30	3	1	20	3	50		Ghost/Whales	2014-06-28
726	4142	21	20	36	1	22	4	1	27	4	49		Ghost/Whales	2014-06-28
727	4142	23	1	39	2	47	4	3			47		Ghost/Whales	2014-06-29
728	4142	23	2	38	1	28	3	2	26	3	54		Ghost/Whales	2014-06-29
730	4142	23	4	38	1	27	4	2	34	4	61		Ghost/Whales	2014-06-29
731	4142	23	5	42	1	28	4	2	125	4	153		Ghost/Whales	2014-06-29
732	4142	23	6	33	1	30	4	0			30		Ghost/Whales	2014-06-29
733	4142	23	7	41	2	31	3	1	48	3	79		Ghost/Whales	2014-06-29
734	4142	23	8	34	2	34	3	3			34		Ghost/Whales	2014-06-29
735	4142	23	9	39	2	36	3	3			36		Ghost/Whales	2014-06-29
736	4142	23	10	39	1	35	3	1	82	3	117		Ghost/Whales	2014-06-29
737	4142	23	11	45	2	31	3	1	77	3	108		Ghost/Whales	2014-06-29
738	4142	23	12	33	1	30	2	1	9	2	39		Ghost/Whales	2014-06-29
739	4142	23	13	40	2	36	4	1	27	3	63		Ghost/Whales	2014-06-29
740	4142	23	14	38	2	31	3	2	22	3	53	SO	Ghost/Whales	2014-06-29
741	4142	23	15	32	1	31	2	1	8	1	39		Ghost/Whales	2014-06-29
742	4142	23	16	38	1	38	4	1	44	4	82		Ghost/Whales	2014-06-29
744	4142	23	18	37	1	29	4	0			29		Ghost/Whales	2014-06-29
745	4142	23	19	33	1	33	3	0			33		Ghost/Whales	2014-06-29
746	4142	23	20	42	1	35	2	1	97	4	132		Ghost/Whales	2014-06-29
747	4142	26	1	39	2	35	4	2	29	4	64		Ghost/Whales	2014-06-30
748	4142	26	2	34	1	31	4	2	23	4	54	SO	Ghost/Whales	2014-06-30
749	4142	26	3	45	2	26	3	1	14	3	40		Ghost/Whales	2014-06-30
751	4142	26	5	34	1	37	3	2	9	2	46		Ghost/Whales	2014-06-30
752	4142	26	6	37	1	30	3	2	9	2	39		Ghost/Whales	2014-06-30
753	4142	26	7	40	2	34	3	2	20	4	54		Ghost/Whales	2014-06-30
754	4142	26	8	37	2	24	4	2	32	4	56		Ghost/Whales	2014-06-30
755	4142	26	9	31	1	28	3	0			28		Ghost/Whales	2014-06-30
756	4142	26	10	38	2	22	3	2	23	3	45	SO	Ghost/Whales	2014-06-30
757	4142	26	11	37	2	31	4	2	5	2	36		Ghost/Whales	2014-06-30
758	4142	26	12	39	1	30	4	2	28	4	58		Ghost/Whales	2014-06-30
759	4142	26	13	44	2	27	3	2	160	4	187		Ghost/Whales	2014-06-30
760	4142	26	14	34	1	43	3	3			43		Ghost/Whales	2014-06-30
761	4142	26	15	44	2	35	3	1	49	3	84		Ghost/Whales	2014-06-30
762	4142	26	16	40	2	27	3	2	14	3	41	SO	Ghost/Whales	2014-06-30
764	4142	26	18	38	2	26	4	2	56	4	82		Ghost/Whales	2014-06-30
765	4142	26	19	34	1	24	2	0			24		Ghost/Whales	2014-06-30
766	4142	26	20	38	2	60	4	3			60		Ghost/Whales	2014-06-30
767	4142	32	1	41	1	27	3	1	29	3	56	SO	1485	2014-07-12
768	4142	32	2	44	2	33	3	1	48	4	81	SO	1485	2014-07-12
769	4142	32	3	45	2	28	3	2	97	3	125		1485	2014-07-12

770	4142	32	4	39	1	37	3	1	17	3	54	1485	2014-07-12
771	4142	32	5	44	2	105	4	3			105	1485	2014-07-12
772	4142	32	6	42	1	33	3	1	36	3	69	1485	2014-07-12
773	4142	32	7	34	1	35	2	0			35	1485	2014-07-12
774	4142	32	8	33	1	26	2	0			26	1485	2014-07-12
775	4142	32	9	41	2	29	4	2	27	3	56	1485	2014-07-12
776	4142	32	10	45	2	29	3	1	182	4	211	1485	2014-07-12
777	4142	32	11	38	2	32	3	3			32	1485	2014-07-12
778	4142	32	12	39	2	32	3	2	6	2	38	1485	2014-07-12
779	4142	32	13	44	2	58	4	3			58	1485	2014-07-12
780	4142	32	14	40	2	27	3	1	35	4	62	1485	2014-07-12
781	4142	32	15	47	2	32	3	1	112	4	144	1485	2014-07-12
782	4142	32	16	43	2	35	3	1	33	3	68	1485	2014-07-12
783	4142	32	17	42	2	38	4	1	46	3	84	1485	2014-07-12
784	4142	32	18	36	2	31	3	2	3	1	34	1485	2014-07-12
785	4142	32	19	39	2	34	3	2	5	1	39	1485	2014-07-12
786	4142	32	20	39	2	52	3	3			52	1485	2014-07-12
787	4142	37	1	41	2	44	3	3			44	1485	2014-07-13
788	4142	37	2	38	2	39	3	3			39	1485	2014-07-13
789	4142	37	3	42	2	62	3	3			62	1485	2014-07-13
790	4142	37	4	32	1	30	2	0			30	1485	2014-07-13
791	4142	37	5	39	2	38	4	3			38	1485	2014-07-13
792	4142	37	6	37	2	26	3	2	7	2	33	1485	2014-07-13
793	4142	37	7	47	2	37	3	2	54	3	91	1485	2014-07-13
794	4142	37	8	37	2	40	3	3			40	SO 1485	2014-07-13
795	4142	37	9	42	2	30	3	2	67	3	97	1485	2014-07-13
796	4142	37	10	43	2	38	4	2	47	3	85	1485	2014-07-13
797	4142	37	11	44	2	127	4	3			127	1485	2014-07-13
798	4142	37	12	38	2	29	3	2	12	2	41	SO 1485	2014-07-13
799	4142	37	13	45	2	36	3	1	62	3	98	1485	2014-07-13
800	4142	37	14	40	1	34	3	2	12	3	46	1485	2014-07-13
801	4142	37	15	45	2	39	4	1	120	4	159	1485	2014-07-13
802	4142	37	16	37	2	24	3	2	9	2	33	1485	2014-07-13
803	4142	37	17	35	2	32	3	0			32	1485	2014-07-13
804	4142	37	18	41	2	30	3	1	71	3	101	1485	2014-07-13
805	4142	37	19	48	2	27	3	1	102	3	129	1485	2014-07-13
806	4142	37	20	45	2	29	3	1	78	4	107	1485	2014-07-13
807	4142	38	1	41	2	26	3	2	19	3	45	1485	2014-07-14
808	4142	38	2	40	2	30	3	2	13	3	43	1485	2014-07-14
809	4142	38	3	48	2	34	3	2	78	4	112	1485	2014-07-14
810	4142	38	4	41	2	30	2	2	4	1	34	1485	2014-07-14
811	4142	38	5	44	2	36	3	2	61	4	97	1485	2014-07-14
812	4142	38	6	44	1	39	3	2	105	3	144	1485	2014-07-14
813	4142	38	7	33	1	29	3	2	12	3	41	1485	2014-07-14
814	4142	38	8	41	2	27	3	1	48	3	75	1485	2014-07-14
815	4142	38	9	41	2	39	2	3			39	1485	2014-07-14
816	4142	38	10	40	2	27	3	2	28	4	55	SO 1485	2014-07-14
817	4142	38	11	42	2	35	3	2	51	4	86	1485	2014-07-14
818	4142	38	12	44	2	31	3	1	69	4	100	1485	2014-07-14
819	4142	38	13	47	2	36	3	2	75	3	111	1485	2014-07-14
820	4142	38	14	41	2	26	3	1	65	4	91	1485	2014-07-14
821	4142	38	15	32	1	22	3	1	6	2	28	1485	2014-07-14
822	4142	38	16	37	2	39	2	3			39	1485	2014-07-14
823	4142	38	17	45	2	32	3	1	84	3	116	1485	2014-07-14
824	4142	38	18	35	1	25	3	0			25	1485	2014-07-14
825	4142	38	19	37	2	43	2	3			43	1485	2014-07-14
826	4142	38	20	39	2	27	3	2	8	2	35	SO 1485	2014-07-14
827	4150	9	1	38	1	36	3	1	4	1	40	Ghost/Whales	2014-07-01
828	4150	9	12	44	2	37	4	2	60	3	97	Ghost/Whales	2014-07-01
829	4150	9	13	35	2	29	4	1	25	4	54	Ghost/Whales	2014-07-01
830	4150	9	14	38	1	26	3	2	17	3	43	Ghost/Whales	2014-07-01
831	4150	9	16	42	2	27	3	1	87	4	114	Ghost/Whales	2014-07-01
832	4150	9	18	41	1	32	4	1	93	4	125	Ghost/Whales	2014-07-01

833	4150	9	28	41	1	28	3	2	79	4	107	Ghost/Whales	2014-07-01	
834	4150	9	32	39	1	33	3	1	15	2	48	Ghost/Whales	2014-07-01	
835	4150	9	36	38	1	27	3	2	39	4	66	Ghost/Whales	2014-07-01	
836	4150	9	38	41	2	26	3	2	22	3	48	Ghost/Whales	2014-07-01	
837	4150	9	39	38	2	37	3	2	40	3	77	Ghost/Whales	2014-07-01	
838	4150	9	43	43	2	114	4	3			114	Ghost/Whales	2014-07-01	
839	4150	9	47	39	1	34	4	1	46	4	80	Ghost/Whales	2014-07-01	
840	4150	9	49	42	2	34	4	1	56	4	90	Ghost/Whales	2014-07-01	
841	4150	9	50	33	1	30	3	0			30	Ghost/Whales	2014-07-01	
842	4150	9	51	42	1	31	3	1	54	3	85	Ghost/Whales	2014-07-01	
843	4150	9	58	36	2	33	3	3			33	Ghost/Whales	2014-07-01	
844	4150	9	64	41	2	37	3	1	32	4	69	Ghost/Whales	2014-07-01	
845	4150	9	66	46	1	28	4	1	90	4	118	Ghost/Whales	2014-07-01	
846	4150	9	76	41	1	34	4	2	29	4	63	Ghost/Whales	2014-07-01	
847	4150	9	78	46	2	37	4	2	111	4	148	Ghost/Whales	2014-07-01	
848	4150	24	2	38	1	34	3	3			34	Ghost/Whales	2014-07-03	
849	4150	24	3	36	2	30	3	0			30	Ghost/Whales	2014-07-03	
850	4150	24	5	34	1	25	2	2	3	1	28	Ghost/Whales	2014-07-03	
851	4150	24	7	42	1	39	3	1	95	3	134	Ghost/Whales	2014-07-03	
852	4150	24	9	38	1	35	4	2	27	3	62	Ghost/Whales	2014-07-03	
853	4150	24	14	39	2	33	4	2	30	3	63	Ghost/Whales	2014-07-03	
854	4150	24	16	37	2	31	3	2	21	3	52	SO	Ghost/Whales	2014-07-03
855	4150	24	17	43	2	32	4	1	23	3	55	Ghost/Whales	2014-07-03	
856	4150	24	18	45	2	145	4	3			145	Ghost/Whales	2014-07-03	
857	4150	24	19	38	1	42	3	3			42	Ghost/Whales	2014-07-03	
858	4150	24	21	41	2	33	2	2	28	3	61	Ghost/Whales	2014-07-03	
859	4150	24	22	38	2	32	2	2	39	3	71	Ghost/Whales	2014-07-03	
860	4150	24	24	39	1	34	3	1	35	3	69	Ghost/Whales	2014-07-03	
861	4150	24	25	42	2	37	3	3			37	Ghost/Whales	2014-07-03	
862	4150	24	32	42	2	32	3	2	30	4	62	Ghost/Whales	2014-07-03	
863	4150	24	35	39	2	33	3	2	34	4	67	Ghost/Whales	2014-07-03	
864	4150	24	40	39	1	30	3	1	51	3	81	Ghost/Whales	2014-07-03	
865	4150	24	42	37	2	29	3	2	13	3	42	Ghost/Whales	2014-07-03	
866	4150	24	62	41	1	35	4	1	84	3	119	Ghost/Whales	2014-07-03	
867	4150	24	70	42	2	36	3	2	32	3	68	Ghost/Whales	2014-07-03	
868	4150	24	71	34	2	33	2	2	22	3	55	Ghost/Whales	2014-07-03	
869	4150	24	75	37	2	26	4	2	12	3	38	Ghost/Whales	2014-07-03	
870	4150	24	76	42	2	33	4	2	28	4	61	Ghost/Whales	2014-07-03	
871	4150	24	77	42	2	37	4	1	37	3	74	SO	Ghost/Whales	2014-07-03
872	4150	30	1	38	1	31	3	1	22	3	53	Ghost/Whales	2014-07-05	
873	4150	30	2	34	1	31	3	2	5	2	36	Ghost/Whales	2014-07-05	
874	4150	30	3	40	2	28	4	2	44	3	72	SO	Ghost/Whales	2014-07-05
875	4150	30	7	35	1	24	3	0			24	SO	Ghost/Whales	2014-07-05
876	4150	30	9	39	2	34	3	1	37	3	71	SO	Ghost/Whales	2014-07-05
877	4150	30	15	37	1	25	4	2	24	4	49	Ghost/Whales	2014-07-05	
878	4150	30	16	39	2	28	3	2	43	4	71	Ghost/Whales	2014-07-05	
879	4150	30	26	42	2	34	3	1	45	4	79	Ghost/Whales	2014-07-05	
880	4150	30	28	39	1	33	3	1	18	3	51	Ghost/Whales	2014-07-05	
881	4150	30	29	41	2	25	3	2	22	3	47	Ghost/Whales	2014-07-05	
882	4150	30	36	35	2	26	3	0			26	Ghost/Whales	2014-07-05	
883	4150	30	50	41	2	32	3	1	55	4	87	Ghost/Whales	2014-07-05	
884	4150	30	51	40	1	30	4	1	53	3	83	Ghost/Whales	2014-07-05	
885	4150	30	54	39	2	25	3	2	14	2	39	Ghost/Whales	2014-07-05	
886	4150	30	55	37	2	39	3	3			39	Ghost/Whales	2014-07-05	
887	4150	30	57	43	2	31	3	1	34	3	65	Ghost/Whales	2014-07-05	
888	4150	30	58	44	2	31	3	2	84	4	115	Ghost/Whales	2014-07-05	
889	4150	30	60	41	2	32	4	2	55	4	87	Ghost/Whales	2014-07-05	
890	4150	30	64	44	2	26	4	2	114	4	140	Ghost/Whales	2014-07-05	
891	4150	30	66	34	2	28	3	2	10	3	38	Ghost/Whales	2014-07-05	
892	4150	30	69	37	2	28	4	2	55	4	83	Ghost/Whales	2014-07-05	
893	4150	30	73	34	1	31	4	0			31	Ghost/Whales	2014-07-05	
894	4150	33	5	35	2	34	3	0			34	Ghost/Whales	2014-07-07	
895	4150	33	13	36	2	42	3	3			42	Ghost/Whales	2014-07-07	

896	4150	33	14	44	1	29	3	1	136	4	165		Ghost/Whales	2014-07-07
897	4150	33	15	38	2	26	3	2	14	2	40		Ghost/Whales	2014-07-07
898	4150	33	16	42	2	28	3	1	122	4	150	SO	Ghost/Whales	2014-07-07
899	4150	33	25	38	2	27	3	2	5	2	32		Ghost/Whales	2014-07-07
900	4150	33	26	35	2	31	3	0			31		Ghost/Whales	2014-07-07
901	4150	33	31	37	1	45	3	3			45	SO	Ghost/Whales	2014-07-07
902	4150	33	32	40	2	26	2	1	51	3	77		Ghost/Whales	2014-07-07
903	4150	33	33	37	2	30	3	2	5	2	35		Ghost/Whales	2014-07-07
904	4150	33	37	44	2	35	4	1	109	4	144		Ghost/Whales	2014-07-07
906	4150	33	44	40	2	43	3	3			43		Ghost/Whales	2014-07-07
907	4150	33	56	43	2	36	3	1	90	3	126		Ghost/Whales	2014-07-07
908	4150	33	60	40	2	33	4	2	39	4	72		Ghost/Whales	2014-07-07
909	4150	33	61	36	2	26	4	2	4	2	30		Ghost/Whales	2014-07-07
910	4150	33	67	37	1	26	3	1	48	3	74		Ghost/Whales	2014-07-07
912	4150	33	70	36	1	30	3	2	16	3	46		Ghost/Whales	2014-07-07
913	4150	33	72	37	2	29	3	1	20	3	49		Ghost/Whales	2014-07-07
914	4150	33	76	39	2	23	4	1	34	3	57		Ghost/Whales	2014-07-07
915	4150	33	77	39	2	49	4	3	49		49	SO	Ghost/Whales	2014-07-07
916	4150	46	4	39	2	29	3	2	16	3	45		Valerie	2014-07-11
917	4150	46	5	32	1	28	3	0			28		Valerie	2014-07-11
918	4150	46	8	31	1	25	3	0			25		Valerie	2014-07-11
919	4150	46	18	38	1	30	3	0			30	SO	Valerie	2014-07-11
920	4150	46	19	32	1	26	3	0			26	SO	Valerie	2014-07-11
921	4150	46	23	29	1	28	3	0			28		Valerie	2014-07-11
922	4150	46	26	33	2	31	4	0			31		Valerie	2014-07-11
923	4150	46	29	37	2	35	3	2	10	2	45		Valerie	2014-07-11
924	4150	46	32	37	2	37	4	3			37	SO	Valerie	2014-07-11
925	4150	46	35	35	2	35	3	0			35	SO	Valerie	2014-07-11
926	4150	46	36	31	1	33	3	0			33		Valerie	2014-07-11
927	4150	46	39	41	2	34	4	0			34		Valerie	2014-07-11
928	4150	46	41	37	2	26	3	1	9	2	35		Valerie	2014-07-11
929	4150	46	48	36	2	33	3	1	13	2	46		Valerie	2014-07-11
930	4150	46	49	35	2	30	3	0			30		Valerie	2014-07-11
931	4150	46	50	39	2	29	4	1	15	3	44		Valerie	2014-07-11
932	4150	46	53	34	2	29	3	0			29		Valerie	2014-07-11
933	4150	46	57	35	2	38	4	3			38	SO	Valerie	2014-07-11
934	4150	46	66	36	1	33	4	0			33		Valerie	2014-07-11
935	4150	46	74	34	1	25	4	0			25		Valerie	2014-07-11
936	4150	49	6	37	1	29	4	1	25	4	54		Valerie	2014-07-12
937	4150	49	7	39	2	30	4	2	12	3	42		Valerie	2014-07-12
938	4150	49	9	34	2	30	3	0			30		Valerie	2014-07-12
939	4150	49	10	39	2	25	3	2	9	2	34		Valerie	2014-07-12
940	4150	49	16	35	1	30	3	1	14	2	44		Valerie	2014-07-12
941	4150	49	17	34	1	34	3	0			34		Valerie	2014-07-12
942	4150	49	21	37	2	30	4	2	13	2	43		Valerie	2014-07-12
943	4150	49	22	34	1	29	3	1	27	3	56		Valerie	2014-07-12
944	4150	49	23	37	2	29	3	2	15	3	44		Valerie	2014-07-12
945	4150	49	29	34	1	23	3	2	11	3	34		Valerie	2014-07-12
946	4150	49	32	35	2	29	3	1	5	2	34		Valerie	2014-07-12
947	4150	49	37	36	1	24	4	1	11	2	35		Valerie	2014-07-12
948	4150	49	40	30	1	28	4	2	3	1	31		Valerie	2014-07-12
949	4150	49	41	34	1	28	2	1	10	2	38		Valerie	2014-07-12
950	4150	49	44	35	1	29	3	2	14	3	43		Valerie	2014-07-12
951	4150	49	45	36	1	28	3	2	12	2	40		Valerie	2014-07-12
952	4150	49	46	40	1	35	3	1	43	3	78		Valerie	2014-07-12
953	4150	49	50	37	2	29	2	1	13	2	42		Valerie	2014-07-12
954	4150	49	60	36	2	31	4	2	3	2	34		Valerie	2014-07-12
955	4150	49	61	36	2	42	3	3			42		Valerie	2014-07-12
956	4150	49	62	36	2	29	4	1	14	3	43		Valerie	2014-07-12
957	4150	49	70	36	2	30	2	2	12	2	42		Valerie	2014-07-12
958	4150	50	2	32	1	31	2	2	3	1	34		Valerie	2014-07-13
959	4150	50	9	37	2	28	3	2	19	3	47	SO	Valerie	2014-07-13
960	4150	50	26	35	2	30	4	2	12	2	42		Valerie	2014-07-13

961	4150	50	27	35	2	30	4	2	4	2	34	SO	Valerie	2014-07-13
962	4150	50	28	34	1	27	2	2	15	3	42	SO	Valerie	2014-07-13
963	4150	50	37	32	1	31	2	0			31		Valerie	2014-07-13
964	4150	50	38	36	2	28	2	1	17	3	45	SO	Valerie	2014-07-13
965	4150	50	40	40	2	27	3	2	20	3	47		Valerie	2014-07-13
966	4150	50	41	37	2	27	3	1	16	3	43		Valerie	2014-07-13
967	4150	50	48	33	1	25	3	1	5	2	30		Valerie	2014-07-13
968	4150	50	49	35	2	31	2	1	8	2	39		Valerie	2014-07-13
969	4150	50	51	35	1	29	3	2	13	3	42		Valerie	2014-07-13
970	4150	50	56	39	1	24	3	2	15	4	39		Valerie	2014-07-13
971	4150	50	57	35	2	25	3	1	10	2	35		Valerie	2014-07-13
972	4150	50	59	32	1	33	3	0			33		Valerie	2014-07-13
973	4150	50	63	36	2	35	3	3			35		Valerie	2014-07-13
974	4150	50	69	35	2	29	3	2	8	2	37		Valerie	2014-07-13
975	4150	50	71	40	2	32	4	2	27	3	59		Valerie	2014-07-13
976	4150	50	72	33	1	32	3	1	12	3	44		Valerie	2014-07-13
977	4150	66	4	46	2	33	3	2	84	3	117		Ghost/Whales	2014-07-15
978	4150	66	10	40	2	28	3	1	45	4	73		Ghost/Whales	2014-07-15
979	4150	66	11	42	2	38	3	1	56	4	94		Ghost/Whales	2014-07-15
980	4150	66	12	35	1	32	3	1	8	2	40		Ghost/Whales	2014-07-15
981	4150	66	15	41	2	112	4	3			112	SO	Ghost/Whales	2014-07-15
982	4150	66	16	39	1	35	4	3			35		Ghost/Whales	2014-07-15
983	4150	66	17	42	2	32	4	2	50	4	82		Ghost/Whales	2014-07-15
984	4150	66	18	36	1	36	3	3			36		Ghost/Whales	2014-07-15
985	4150	66	19	42	2	31	3	2	93	4	124		Ghost/Whales	2014-07-15
986	4150	66	20	45	2	33	4	2	107	4	140		Ghost/Whales	2014-07-15
987	4150	66	21	36	2	32	3	2	42	3	74		Ghost/Whales	2014-07-15
988	4150	66	24	43	2	36	4	2	67	3	103		Ghost/Whales	2014-07-15
989	4150	66	28	35	2	24	3	2	17	2	41	SO	Ghost/Whales	2014-07-15
990	4406	1	1	35	2	32	4	0			32	SO	Ghost/Whales	2015-06-01
991	4406	1	2	46	2	26	4	2	170	4	196	SO	Ghost/Whales	2015-06-01
992	4406	1	3	37	2	28	3	2	15	2	43		Ghost/Whales	2015-06-01
993	4406	1	4	35	2	31	3	0			31		Ghost/Whales	2015-06-01
994	4406	1	5	46	2	34	4	2	147	4	181		Ghost/Whales	2015-06-01
995	4406	1	6	32	1	25	4	2	3	1	28		Ghost/Whales	2015-06-01
996	4406	1	7	42	2	69	4	3			69		Ghost/Whales	2015-06-01
997	4406	1	8	41	2	32	3	2	74	4	106		Ghost/Whales	2015-06-01
998	4406	1	9	35	2	23	3	2	4	2	27		Ghost/Whales	2015-06-01
999	4406	1	10	36	2	24	4	2	10	3	34		Ghost/Whales	2015-06-01
1000	4406	1	11	43	2	33	3	1	39	4	72		Ghost/Whales	2015-06-01
1001	4406	1	12	47	2	32	4	2	169	4	201		Ghost/Whales	2015-06-01
1002	4406	1	13	37	2	28	3	1	5	2	33		Ghost/Whales	2015-06-01
1003	4406	1	14	36	2	26	3	2	5	2	31		Ghost/Whales	2015-06-01
1004	4406	1	15	40	2	36	3	2	6	2	42		Ghost/Whales	2015-06-01
1005	4406	1	16	39	2	32	3	2	34	4	66		Ghost/Whales	2015-06-01
1006	4406	1	17	49	2	28	4	2	74	4	102		Ghost/Whales	2015-06-01
1007	4406	1	18	40	2	36	3	1	59	3	95		Ghost/Whales	2015-06-01
1009	4406	1	20	39	2	33	3	2	3	1	36		Ghost/Whales	2015-06-01
1010	4406	6	1	34	1	33	3	2	3	1	36		Ghost/Whales	2015-06-02
1011	4406	6	2	41	1	31	3	1	46	3	77		Ghost/Whales	2015-06-02
1012	4406	6	3	34	1	30	3	0			30		Ghost/Whales	2015-06-02
1013	4406	6	4	38	2	32	3	1	28	3	60		Ghost/Whales	2015-06-02
1014	4406	6	5	45	2	33	3	2	134	4	167		Ghost/Whales	2015-06-02
1015	4406	6	6	41	2	35	2	3			35		Ghost/Whales	2015-06-02
1016	4406	6	7	47	2	34	4	2	101	4	135	SO	Ghost/Whales	2015-06-02
1017	4406	6	8	38	2	34	4	2	47	4	81		Ghost/Whales	2015-06-02
1018	4406	6	9	44	1	30	3	1	133	4	163		Ghost/Whales	2015-06-02
1019	4406	6	10	42	2	57	4	3			57		Ghost/Whales	2015-06-02
1020	4406	6	11	47	2	37	3	2	165	4	202		Ghost/Whales	2015-06-02
1021	4406	6	12	38	1	40	3	3			40		Ghost/Whales	2015-06-02
1022	4406	6	13	40	2	28	3	1	34	3	62		Ghost/Whales	2015-06-02
1023	4406	6	14	38	2	26	3	2	19	3	45	SO	Ghost/Whales	2015-06-02
1024	4406	6	15	38	1	32	4	1	55	4	87		Ghost/Whales	2015-06-02

1026	4406	13	2	41	2	34	4	2	14	3	48	Ghost/Whales	2015-06-03	
1027	4406	13	3	37	1	26	3	2	42	3	68	Ghost/Whales	2015-06-03	
1028	4406	13	4	39	2	25	4	2	7	2	32	Ghost/Whales	2015-06-03	
1029	4406	13	5	45	2	32	3	2	85	4	117	Ghost/Whales	2015-06-03	
1030	4406	13	6	40	2	41	3	3			41	Ghost/Whales	2015-06-03	
1031	4406	13	7	40	2	35	3	2	13	3	48	Ghost/Whales	2015-06-03	
1032	4406	13	8	36	1	25	3	1	10	2	35	Ghost/Whales	2015-06-03	
1033	4406	13	9	45	2	38	4	2	160	4	198	Ghost/Whales	2015-06-03	
1034	4406	13	10	41	2	33	4	2	25	3	58	Ghost/Whales	2015-06-03	
1035	4406	14	1	38	2	23	3	2	13	2	36	Ghost/Whales	2015-06-03	
1036	4406	14	2	38	2	25	4	2	60	4	85	SO	Ghost/Whales	2015-06-03
1037	4406	14	3	37	2	29	2	2	16	2	45	Ghost/Whales	2015-06-03	
1038	4406	14	4	35	1	30	3	1	5	1	35	Ghost/Whales	2015-06-03	
1039	4406	14	5	46	2	36	3	2	98	4	134	SO	Ghost/Whales	2015-06-03
1040	4406	14	6	43	2	30	3	2	44	4	74	SO	Ghost/Whales	2015-06-03
1041	4406	14	7	38	2	36	3	3			36	Ghost/Whales	2015-06-03	
1042	4406	14	8	42	2	36	3	1	60	4	96	Ghost/Whales	2015-06-03	
1043	4406	14	9	38	1	43	3	3			43	Ghost/Whales	2015-06-03	
1044	4406	14	10	40	2	25	3	2	45	3	70	Ghost/Whales	2015-06-03	
1045	4406	14	11	38	2	42	3	3			42	SO	Ghost/Whales	2015-06-03
1046	4406	14	12	41	2	33	4	2	72	4	105	Ghost/Whales	2015-06-03	
1047	4406	14	13	38	2	34	3	1	18	3	52	Ghost/Whales	2015-06-03	
1048	4406	14	14	35	1	30	4	2	15	4	45	SO	Ghost/Whales	2015-06-03
1049	4406	14	15	40	2	33	3	1	36	4	69	Ghost/Whales	2015-06-03	
1050	4406	14	16	41	2	28	3	1	44	3	72	Ghost/Whales	2015-06-03	
1051	4406	14	17	39	2	28	3	2	18	2	46	Ghost/Whales	2015-06-03	
1052	4406	14	18	34	2	28	2	0			28	Ghost/Whales	2015-06-03	
1053	4406	14	19	43	2	32	3	1	69	3	101	Ghost/Whales	2015-06-03	
1054	4406	14	20	35	2	25	4	1	20	3	45	Ghost/Whales	2015-06-03	
1055	4406	22	1	37	2	33	4	2	39	3	72	Valerie	2015-06-04	
1056	4406	22	2	41	2	31	3	1	36	3	67	SO	Valerie	2015-06-04
1057	4406	22	3	36	2	31	2	1	9	2	40	Valerie	2015-06-04	
1058	4406	22	4	41	2	31	4	1	44	3	75	Valerie	2015-06-04	
1059	4406	22	5	34	1	31	3	2	4	1	35	Valerie	2015-06-04	
1060	4406	22	6	40	2	25	4	1	27	4	52	Valerie	2015-06-04	
1061	4406	22	7	42	2	30	3	2	23	4	53	Valerie	2015-06-04	
1062	4406	22	8	42	2	30	3	2	26	3	56	Valerie	2015-06-04	
1063	4406	22	9	37	2	37	3	2	18	3	55	Valerie	2015-06-04	
1064	4406	22	10	41	1	35	3	1	48	4	83	Valerie	2015-06-04	
1065	4406	22	11	37	1	26	3	1	7	2	33	Valerie	2015-06-04	
1066	4406	22	12	37	2	28	4	1	17	4	45	SO	Valerie	2015-06-04
1067	4406	22	13	38	2	26	3	1	12	3	38	Valerie	2015-06-04	
1068	4406	22	14	36	1	33	3	1	11	2	44	Valerie	2015-06-04	
1069	4406	22	15	39	2	28	2	2	4	1	32	Valerie	2015-06-04	
1070	4406	22	16	41	2	32	2	2	19	3	51	Valerie	2015-06-04	
1071	4406	22	17	36	1	25	4	2	44	4	69	Valerie	2015-06-04	
1072	4406	22	18	41	2	26	4	1	42	4	68	Valerie	2015-06-04	
1073	4406	22	19	44	2	29	4	2	58	3	87	Valerie	2015-06-04	
1074	4406	22	20	37	2	30	3	2	5	2	35	Valerie	2015-06-04	
1075	4406	27	1	38	2	32	3	2	5	2	37	Valerie	2015-06-05	
1076	4406	27	2	39	2	25	3	1	14	3	39	Valerie	2015-06-05	
1077	4406	27	3	40	2	33	3	2	35	3	68	Valerie	2015-06-05	
1078	4406	27	4	38	2	31	3	2	15	3	46	Valerie	2015-06-05	
1079	4406	27	5	39	2	27	3	1	14	2	41	Valerie	2015-06-05	
1080	4406	27	6	39	1	31	3	2	42	4	73	Valerie	2015-06-05	
1081	4406	27	7	41	2	26	3	2	18	3	44	Valerie	2015-06-05	
1082	4406	27	8	37	2	31	3	1	48	4	79	Valerie	2015-06-05	
1083	4406	27	9	37	2	48	3	3			48	Valerie	2015-06-05	
1084	4406	27	10	43	2	31	3	2	56	3	87	SO	Valerie	2015-06-05
1085	4406	27	11	37	2	34	3	2	6	2	40	Valerie	2015-06-05	
1086	4406	27	12	37	2	31	3	1	20	3	51	Valerie	2015-06-05	
1087	4406	27	13	41	2	38	3	3			38	Valerie	2015-06-05	
1088	4406	27	14	40	2	29	2	1	13	2	42	Valerie	2015-06-05	

1089	4406	27	15	38	2	25	3	1	12	3	37		Valerie	2015-06-05
1090	4406	31	1	44	2	34	4	2	196	4	230		Ghost/Whales	2015-06-06
1091	4406	31	2	39	2	38	4	3			38	SO	Ghost/Whales	2015-06-06
1092	4406	31	3	38	1	31	3	2	11	3	42		Ghost/Whales	2015-06-06
1093	4406	31	4	39	2	28	3	2	39	4	67		Ghost/Whales	2015-06-06
1094	4406	31	5	40	1	34	3	1	44	3	78		Ghost/Whales	2015-06-06
1095	4406	31	6	44	2	37	2	1	96	4	133		Ghost/Whales	2015-06-06
1096	4406	31	7	40	2	32	4	1	26	3	58		Ghost/Whales	2015-06-06
1097	4406	31	8	45	2	36	3	1	108	4	144		Ghost/Whales	2015-06-06
1098	4406	31	9	42	2	27	4	2	23	3	50		Ghost/Whales	2015-06-06
1099	4406	31	10	41	2	33	3	1	34	3	67		Ghost/Whales	2015-06-06
1100	4406	31	11	44	2	34	3	2	128	4	162		Ghost/Whales	2015-06-06
1101	4406	31	12	40	2	30	3	2	29	4	59		Ghost/Whales	2015-06-06
1102	4406	31	13	42	2	30	3	2	35	3	65		Ghost/Whales	2015-06-06
1103	4406	31	14	41	1	33	3	1	96	3	129		Ghost/Whales	2015-06-06
1104	4406	31	15	37	2	34	3	2	11	3	45	SO	Ghost/Whales	2015-06-06
1105	4406	31	16	40	2	33	3	2	46	3	79		Ghost/Whales	2015-06-06
1106	4406	31	17	41	2	29	3	1	62	3	91		Ghost/Whales	2015-06-06
1107	4406	31	18	38	2	28	3	1	21	3	49		Ghost/Whales	2015-06-06
1109	4406	31	20	41	1	31	3	1	60	3	91		Ghost/Whales	2015-06-06
1110	4406	33	1	41	2	36	4	1	24	3	60		Ghost/Whales	2015-06-06
1111	4406	33	2	37	1	33	2	2	6	2	39		Ghost/Whales	2015-06-06
1112	4406	33	3	36	2	29	2	1	10	2	39		Ghost/Whales	2015-06-06
1113	4406	33	4	34	2	26	3	1	11	2	37		Ghost/Whales	2015-06-06
1114	4406	33	5	38	1	32	4	1	60	3	92		Ghost/Whales	2015-06-06
1115	4406	33	6	41	2	33	2	1	51	3	84		Ghost/Whales	2015-06-06
1116	4406	33	7	39	2	34	3	1	47	3	81		Ghost/Whales	2015-06-06
1117	4406	33	8	46	2	38	2	1	87	4	125		Ghost/Whales	2015-06-06
1118	4406	33	9	37	2	56	3	3			56		Ghost/Whales	2015-06-06
1119	4406	33	10	35	1	26	3	2	5	2	31		Ghost/Whales	2015-06-06
1120	4406	33	11	39	2	60	3	3			60		Ghost/Whales	2015-06-06
1121	4406	33	12	37	1	29	3	2	56	3	85		Ghost/Whales	2015-06-06
1122	4406	33	13	40	2	30	3	2	28	3	58		Ghost/Whales	2015-06-06
1123	4406	33	14	33	1	28	3	1	12	2	40		Ghost/Whales	2015-06-06
1124	4406	33	15	38	2	37	3	2	25	3	62		Ghost/Whales	2015-06-06
1125	4406	45	1	40	2	30	2	1	20	3	50		Ghost/Whales	2015-06-20
1126	4406	45	2	44	2	35	4	1	180	4	215		Ghost/Whales	2015-06-20
1128	4406	45	4	38	2	28	4	1	58	4	86		Ghost/Whales	2015-06-20
1129	4406	45	5	34	1	25	4	2	19	2	44		Ghost/Whales	2015-06-20
1130	4406	51	1	35	1	34	2	2	7	2	41		Ghost/Whales	2015-06-22
1131	4406	51	2	39	2	31	3	1	36	3	67		Ghost/Whales	2015-06-22
1132	4406	51	3	42	1	30	2	1	101	3	131		Ghost/Whales	2015-06-22
1133	4406	51	4	40	2	34	3	2	48	3	82		Ghost/Whales	2015-06-22
1134	4406	51	5	36	1	31	3	1	12	2	43		Ghost/Whales	2015-06-22
1135	4406	51	6	40	1	30	3	1	80	4	110		Ghost/Whales	2015-06-22
1136	4406	51	7	35	1	27	3	2	26	3	53		Ghost/Whales	2015-06-22
1137	4406	51	8	38	1	32	3	1	93	3	125		Ghost/Whales	2015-06-22
1138	4406	51	9	42	2	32	3	2	52	3	84	SO	Ghost/Whales	2015-06-22
1139	4406	51	10	42	1	38	4	1	64	4	102	SO	Ghost/Whales	2015-06-22
1140	4406	51	11	41	1	26	4	1	62	3	88		Ghost/Whales	2015-06-22
1141	4406	51	12	35	1	24	4	2	5	2	29		Ghost/Whales	2015-06-22
1142	4406	51	13	42	2	24	4	1	39	4	63	SO	Ghost/Whales	2015-06-22
1143	4406	51	14	41	2	65	4	3			65		Ghost/Whales	2015-06-22
1144	4406	51	15	41	1	34	4	1	124	3	158		Ghost/Whales	2015-06-22
1145	4406	52	1	46	2	34	3	1	83	3	117		Ghost/Whales	2015-06-22
1146	4406	52	2	37	2	22	4	1	50	4	72		Ghost/Whales	2015-06-22
1147	4406	52	3	38	2	27	4	2	27	3	54		Ghost/Whales	2015-06-22
1148	4406	52	4	40	2	49	4	3			49		Ghost/Whales	2015-06-22
1149	4406	52	5	38	2	30	4	1	20	3	50	SO	Ghost/Whales	2015-06-22
1150	4406	52	6	42	2	45	3	3			45		Ghost/Whales	2015-06-22
1151	4406	52	7	36	1	31	3	0			31	SO	Ghost/Whales	2015-06-22
1152	4406	52	8	39	2	26	4	1	50	3	76		Ghost/Whales	2015-06-22
1153	4406	52	9	43	1	31	3	1	77	3	108		Ghost/Whales	2015-06-22

1154	4406	52	10	38	1	32	3	2	5	2	37		Ghost/Whales	2015-06-22
1155	4406	52	11	40	1	31	4	1	34	4	65	SO	Ghost/Whales	2015-06-22
1156	4406	52	12	40	1	26	3	2	30	4	56		Ghost/Whales	2015-06-22
1157	4406	52	13	41	2	31	3	1	51	3	82		Ghost/Whales	2015-06-22
1158	4406	52	14	45	2	28	3	1	125	4	153		Ghost/Whales	2015-06-22
1159	4406	52	15	36	1	25	2	1	4	2	29		Ghost/Whales	2015-06-22
1160	4406	52	16	34	2	31	2	2	6	1	37		Ghost/Whales	2015-06-22
1161	4406	52	17	39	2	28	2	1	12	2	40		Ghost/Whales	2015-06-22
1162	4406	52	18	46	2	32	4	2	96	4	128		Ghost/Whales	2015-06-22
1163	4406	52	19	45	2	30	3	2	130	4	160		Ghost/Whales	2015-06-22
1164	4406	52	20	38	2	26	4	1	56	3	82		Ghost/Whales	2015-06-22
1165	4406	61	1	44	2	32	3	1	85	4	117		Ghost/Whales	2015-06-23
1166	4406	61	2	40	2	38	3	2	40	4	78		Ghost/Whales	2015-06-23
1167	4406	61	3	40	2	37	3	2	46	3	83		Ghost/Whales	2015-06-23
1168	4406	61	4	45	2	37	4	2	143	3	180		Ghost/Whales	2015-06-23
1169	4406	61	5	36	1	35	3	2	7	1	42		Ghost/Whales	2015-06-23
1172	4406	61	8	37	1	40	3	3			40		Ghost/Whales	2015-06-23
1173	4406	61	9	38	2	31	2	2	18	4	49	SO	Ghost/Whales	2015-06-23
1174	4406	61	10	39	1	58	4	3			58		Ghost/Whales	2015-06-23
1175	4406	61	11	40	2	32	3	1	44	4	76		Ghost/Whales	2015-06-23
1176	4406	61	12	36	1	28	3	0			28		Ghost/Whales	2015-06-23
1177	4406	61	13	42	2	31	3	2	23	4	54		Ghost/Whales	2015-06-23
1178	4406	61	14	41	2	38	3	1	69	3	107		Ghost/Whales	2015-06-23
1179	4406	61	15	37	1	29	4	2	17	3	46		Ghost/Whales	2015-06-23
1180	4406	61	16	43	2	37	3	1	41	3	78		Ghost/Whales	2015-06-23
1181	4406	61	17	39	2	31	3	1	24	2	55		Ghost/Whales	2015-06-23
1182	4406	61	18	42	1	27	4	1	93	3	120		Ghost/Whales	2015-06-23
1183	4406	61	19	45	2	36	3	1	105	3	141		Ghost/Whales	2015-06-23
1184	4406	61	20	38	2	30	2	2	14	2	44		Ghost/Whales	2015-06-23
1185	4406	63	1	36	2	34	3	0			34		Ghost/Whales	2015-06-24
1186	4406	63	2	33	1	33	3	0			33	SO	Ghost/Whales	2015-06-24
1187	4406	63	3	42	2	28	3	2	65	4	93		Ghost/Whales	2015-06-24
1188	4406	63	4	38	1	57	3	3			57		Ghost/Whales	2015-06-24
1189	4406	63	5	36	2	25	4	2	19	4	44		Ghost/Whales	2015-06-24
1190	4406	63	6	38	2	32	3	1	12	2	44		Ghost/Whales	2015-06-24
1191	4406	63	7	42	2	60	4	3			60	SO	Ghost/Whales	2015-06-24
1192	4406	63	8	40	2	30	3	2	22	3	52		Ghost/Whales	2015-06-24
1193	4406	63	9	39	2	31	3	2	15	2	46		Ghost/Whales	2015-06-24
1194	4406	63	10	42	2	27	3	1	43	3	70		Ghost/Whales	2015-06-24
1195	4406	63	11	42	2	29	3	2	38	3	67		Ghost/Whales	2015-06-24
1196	4406	63	12	40	2	51	3	3			51		Ghost/Whales	2015-06-24
1197	4406	63	13	41	2	56	4	3			56		Ghost/Whales	2015-06-24
1198	4406	63	14	39	2	29	4	1	56	3	85		Ghost/Whales	2015-06-24
1199	4406	63	15	42	2	33	4	2	103	4	136		Ghost/Whales	2015-06-24
1200	4406	63	16	42	2	31	4	2	74	4	105		Ghost/Whales	2015-06-24
1201	4406	63	17	43	2	30	3	2	57	4	87		Ghost/Whales	2015-06-24
1202	4406	63	18	37	2	33	3	2	9	2	42		Ghost/Whales	2015-06-24
1203	4406	63	19	42	2	32	3	1	60	3	92		Ghost/Whales	2015-06-24
1204	4406	63	20	44	2	35	4	2	85	4	120		Ghost/Whales	2015-06-24
1205	4406	67	1	45	2	34	4	1	85	4	119		Ghost/Whales	2015-06-25
1206	4406	67	2	42	1	27	4	1	74	4	101	SO	Ghost/Whales	2015-06-25
1207	4406	67	3	43	2	37	2	1	58	3	95		Ghost/Whales	2015-06-25
1208	4406	67	4	44	2	37	3	2	124	4	161		Ghost/Whales	2015-06-25
1209	4406	67	5	39	2	24	4	2	47	4	71		Ghost/Whales	2015-06-25
1210	4406	67	6	44	2	38	3	2	65	3	103		Ghost/Whales	2015-06-25
1211	4406	67	7	43	2	34	3	1	134	3	168		Ghost/Whales	2015-06-25
1212	4406	67	8	39	2	28	4	2	45	3	73		Ghost/Whales	2015-06-25
1213	4406	67	9	42	2	122	3	3			122		Ghost/Whales	2015-06-25
1214	4406	67	10	41	2	36	2	2	10	2	46	SO	Ghost/Whales	2015-06-25
1215	4406	67	11	42	2	27	4	2	120	4	147		Ghost/Whales	2015-06-25
1216	4406	67	12	45	2	36	4	2	153	4	189		Ghost/Whales	2015-06-25
1217	4406	67	13	38	1	30	2	0			30		Ghost/Whales	2015-06-25
1218	4406	67	14	40	2	31	3	1	41	3	72		Ghost/Whales	2015-06-25

1219	4406	67	15	35	2	34	2	0		34	Ghost/Whales	2015-06-25		
1220	4406	67	16	41	2	39	3	2	56	4	95	Ghost/Whales	2015-06-25	
1221	4406	67	17	37	2	34	4	2	24	4	58	Ghost/Whales	2015-06-25	
1222	4406	67	18	41	2	31	4	2	47	4	78	Ghost/Whales	2015-06-25	
1223	4406	67	19	40	2	32	3	1	28	4	60	Ghost/Whales	2015-06-25	
1224	4406	67	20	38	2	24	3	1	21	3	45	Ghost/Whales	2015-06-25	
1225	4422	36	1	38	2	30	2	1	22	3	52	Ghost/Whales	2015-07-04	
1226	4422	36	2	35	2	33	3	2	5	2	38	Ghost/Whales	2015-07-04	
1227	4422	36	3	39	2	32	2	1	25	3	57	Ghost/Whales	2015-07-04	
1228	4422	36	4	37	2	27	3	2	3	2	30	Ghost/Whales	2015-07-04	
1229	4422	36	5	34	1	32	2	2	4	1	36	Ghost/Whales	2015-07-04	
1230	4422	36	6	38	2	34	3	1	25	3	59	Ghost/Whales	2015-07-04	
1231	4422	36	7	38	2	33	3	1	50	3	83	Ghost/Whales	2015-07-04	
1232	4422	36	8	37	1	35	3	2	39	3	74	Ghost/Whales	2015-07-04	
1233	4422	36	9	38	2	35	4	0			35	Ghost/Whales	2015-07-04	
1234	4422	36	10	40	1	35	4	2	21	4	56	Ghost/Whales	2015-07-04	
1235	4422	36	11	37	2	35	3	2	11	3	46	Ghost/Whales	2015-07-04	
1236	4422	36	12	36	2	26	3	2	48	4	74	Ghost/Whales	2015-07-04	
1237	4422	36	13	37	2	37	3	2	6	2	43	Ghost/Whales	2015-07-04	
1238	4422	36	14	34	2	31	3	0			31	Ghost/Whales	2015-07-04	
1239	4422	36	15	44	2	28	3	2	30	4	58	Ghost/Whales	2015-07-04	
1240	4422	36	16	35	2	38	4	2	70	4	108	Ghost/Whales	2015-07-04	
1241	4422	36	17	36	2	34	3	2	4	2	38	Ghost/Whales	2015-07-04	
1242	4422	36	18	40	2	28	2	1	13	3	41	Ghost/Whales	2015-07-04	
1243	4422	36	19	34	1	32	2	0			32	Ghost/Whales	2015-07-04	
1244	4422	36	20	37	2	62	4	3			62	Ghost/Whales	2015-07-04	
1245	4422	40	1	45	2	31	3	1	64	4	95	SO	Ghost/Whales	2015-07-04
1246	4422	40	2	41	2	44	3	3			44	Ghost/Whales	2015-07-04	
1247	4422	40	3	44	2	30	4	1	43	3	73	Ghost/Whales	2015-07-04	
1248	4422	40	4	42	2	37	3	3			37	Ghost/Whales	2015-07-04	
1249	4422	40	5	39	2	28	4	2	20	3	48	Ghost/Whales	2015-07-04	
1250	4422	40	6	46	2	35	3	2	46	4	81	Ghost/Whales	2015-07-04	
1251	4422	40	7	39	2	26	4	1	45	4	71	Ghost/Whales	2015-07-04	
1252	4422	40	8	37	2	25	3	1	15	2	40	Ghost/Whales	2015-07-04	
1253	4422	40	9	42	2	27	3	1	50	4	77	Ghost/Whales	2015-07-04	
1254	4422	40	10	44	2	30	3	2	66	3	96	Ghost/Whales	2015-07-04	
1255	4422	40	11	43	2	27	3	1	32	3	59	Ghost/Whales	2015-07-04	
1256	4422	40	12	47	2	28	4	1	88	4	116	Ghost/Whales	2015-07-04	
1257	4422	40	13	42	2	29	3	1	46	3	75	Ghost/Whales	2015-07-04	
1258	4422	40	14	40	1	28	3	1	33	4	61	Ghost/Whales	2015-07-04	
1259	4422	40	15	35	2	45	4	3			45	Ghost/Whales	2015-07-04	
1260	4422	40	16	46	2	34	3	1	103	3	137	Ghost/Whales	2015-07-04	
1261	4422	40	17	43	2	30	3	2	29	3	59	Ghost/Whales	2015-07-04	
1262	4422	40	18	39	2	33	4	1	19	3	52	Ghost/Whales	2015-07-04	
1263	4422	44	1	36	2	36	4	2	3	2	39	Ghost/Whales	2015-07-06	
1264	4422	44	2	45	2	69	3	3			69	Ghost/Whales	2015-07-06	
1265	4422	44	3	45	2	30	4	2	92	4	122	Ghost/Whales	2015-07-06	
1266	4422	44	4	33	1	25	3	0			25	Ghost/Whales	2015-07-06	
1267	4422	44	5	45	2	37	3	2	60	3	97	Ghost/Whales	2015-07-06	
1268	4422	44	6	42	2	35	3	1	42	3	77	Ghost/Whales	2015-07-06	
1269	4422	44	7	38	2	75	3	3			75	Ghost/Whales	2015-07-06	
1270	4422	44	8	45	2	31	4	1	65	3	96	Ghost/Whales	2015-07-06	
1271	4422	44	9	44	2	32	3	2	74	3	106	Ghost/Whales	2015-07-06	
1272	4422	44	10	40	2	28	4	2	54	4	82	Ghost/Whales	2015-07-06	
1273	4422	44	11	41	2	32	3	2	50	3	82	Ghost/Whales	2015-07-06	
1274	4422	44	12	38	2	31	3	2	10	2	41	Ghost/Whales	2015-07-06	
1275	4422	44	13	36	2	36	3	1	7	2	43	Ghost/Whales	2015-07-06	
1276	4422	44	14	37	2	32	3	2	7	2	39	Ghost/Whales	2015-07-06	
1277	4422	44	15	38	2	28	4	2	10	3	38	Ghost/Whales	2015-07-06	
1278	4422	44	16	41	2	27	4	1	23	3	50	Ghost/Whales	2015-07-06	
1279	4422	44	17	38	2	35	3	2	42	4	77	Ghost/Whales	2015-07-06	
1280	4422	44	18	40	2	50	4	3			50	Ghost/Whales	2015-07-06	
1281	4422	44	19	42	2	32	3	1	34	3	66	SO	Ghost/Whales	2015-07-06

1282	4422	44	20	41	2	36	4	1	87	3	123	Ghost/Whales	2015-07-06
1283	4422	50	1	36	2	53	3	3			53	Ghost/Whales	2015-07-07
1284	4422	50	2	40	2	36	3	2	8	3	44	Ghost/Whales	2015-07-07
1285	4422	50	3	37	2	25	3	1	34	4	59	Ghost/Whales	2015-07-07
1286	4422	50	4	39	2	36	2	2	4	1	40	Ghost/Whales	2015-07-07
1287	4422	50	5	40	2	36	3	3			36	Ghost/Whales	2015-07-07
1288	4422	50	6	40	2	41	2	3			41	Ghost/Whales	2015-07-07
1289	4422	50	7	41	2	63	3	3			63	Ghost/Whales	2015-07-07
1290	4422	50	8	38	2	26	3	2	12	2	38	Ghost/Whales	2015-07-07
1292	4422	50	10	38	2	30	3	1	24	3	54	Ghost/Whales	2015-07-07
1293	4422	50	11	42	2	33	3	1	60	3	93	Ghost/Whales	2015-07-07
1294	4422	50	12	44	2	25	4	1	44	4	69	Ghost/Whales	2015-07-07
1295	4422	50	13	38	2	33	3	2	10	2	43	Ghost/Whales	2015-07-07
1296	4422	50	14	34	1	25	4	2	21	4	46	Ghost/Whales	2015-07-07
1297	4422	50	15	38	2	26	3	0			26	Ghost/Whales	2015-07-07
1298	4422	50	16	40	2	35	2	2	8	2	43	Ghost/Whales	2015-07-07
1299	4422	50	17	35	1	28	2	0			28	Ghost/Whales	2015-07-07
1300	4422	50	18	41	2	27	3	2	12	3	39	Ghost/Whales	2015-07-07
1301	4422	50	19	36	1	34	3	0			34	Ghost/Whales	2015-07-07
1302	4422	50	20	39	2	31	3	2	7	2	38	Ghost/Whales	2015-07-07
1303	4422	52	1	34	1	22	3	2	13	2	35	Ghost/Whales	2015-07-07
1304	4422	52	2	35	2	24	3	0			24	Ghost/Whales	2015-07-07
1305	4422	52	3	37	1	26	3	2	16	2	42	Ghost/Whales	2015-07-07
1306	4422	52	4	37	1	32	2	2	7	2	39	Ghost/Whales	2015-07-07
1307	4422	52	5	37	2	28	3	2	17	3	45	SO Ghost/Whales	2015-07-07
1308	4422	52	6	39	2	28	3	2	11	3	39	Ghost/Whales	2015-07-07
1309	4422	52	7	39	2	30	3	1	11	2	41	Ghost/Whales	2015-07-07
1311	4422	52	9	41	2	27	3	1	40	3	67	Ghost/Whales	2015-07-07
1312	4422	52	10	42	2	25	3	1	59	3	84	Ghost/Whales	2015-07-07
1313	4422	52	11	42	2	29	3	1	39	3	68	Ghost/Whales	2015-07-07
1314	4422	52	12	44	2	30	4	1	76	3	106	Ghost/Whales	2015-07-07
1315	4422	52	13	44	2	98	4	3			98	Ghost/Whales	2015-07-07
1316	4446	1	1	40	2	27	4	1	63	3	90	?	2015-07-10
1318	4446	1	3	35	2	29	3	1	18	4	47	?	2015-07-10
1319	4446	1	4	32	2	30	4	1	17	3	47	?	2015-07-10
1321	4446	1	6	37	2	48	4	3			48	SO ?	2015-07-10
1322	4446	1	7	36	2	32	3	1	48	3	80	?	2015-07-10
1323	4446	1	8	36	2	45	2	3			45	?	2015-07-10
1324	4446	1	9	41	2	36	3	1	68	4	104	?	2015-07-10
1325	4446	1	10	36	2	28	3	2	5	2	33	?	2015-07-10
1326	4446	2	1	32	2	28	2	0			28	Valerie	2015-07-10
1327	4446	2	2	33	2	36	3	0			36	Valerie	2015-07-10
1328	4446	2	3	31	2	28	2	2	2	1	30	Valerie	2015-07-10
1329	4446	2	4	34	2	23	2	1	12	3	35	Valerie	2015-07-10
1330	4446	2	5	35	1	30	2	1	10	2	40	Valerie	2015-07-10
1331	4446	2	6	38	2	30	3	2	11	3	41	Valerie	2015-07-10
1332	4446	2	7	34	2	32	3	0			32	Valerie	2015-07-10
1333	4446	2	8	39	2	29	3	2	65	3	94	Valerie	2015-07-10
1334	4446	2	9	38	2	28	2	2	11	2	39	Valerie	2015-07-10
1335	4446	2	10	39	2	35	3	2	36	3	71	Valerie	2015-07-10
1336	4446	2	11	35	2	34	3	0			34	Valerie	2015-07-10
1337	4446	2	12	35	1	26	2	0			26	Valerie	2015-07-10
1338	4446	2	13	38	2	48	2	3			48	Valerie	2015-07-10
1339	4446	2	14	37	2	33	3	2	16	3	49	Valerie	2015-07-10
1340	4446	2	15	41	2	31	4	1	81	3	112	SO Valerie	2015-07-10
1341	4446	2	16	35	2	36	3	3			36	Valerie	2015-07-10
1342	4446	2	17	33	2	38	3	3			38	Valerie	2015-07-10
1343	4446	2	18	39	2	51	4	3			51	Valerie	2015-07-10
1344	4446	2	19	37	2	27	3	2	15	3	42	Valerie	2015-07-10
1345	4446	2	20	33	1	27	4	1	9	2	36	Valerie	2015-07-10
1346	4446	5	1	39	2	35	3	2	23	4	58	Valerie	2015-07-11
1347	4446	5	2	40	2	31	3	2	16	2	47	Valerie	2015-07-11
1348	4446	5	3	34	1	28	3	2	14	2	42	SO Valerie	2015-07-11

1349	4446	5	4	35	2	27	3	0		27		Valerie	2015-07-11	
1350	4446	5	5	38	2	34	4	2	7	2	41	Valerie	2015-07-11	
1351	4446	5	6	39	2	27	3	2	12	2	39	SO	Valerie	2015-07-11
1352	4446	5	7	34	1	25	3	2	13	2	38	Valerie	2015-07-11	
1353	4446	5	8	42	1	24	4	1	61	3	85	SO	Valerie	2015-07-11
1354	4446	5	9	39	2	26	4	2	16	3	42	SO	Valerie	2015-07-11
1355	4446	5	10	32	1	28	3	2	6	2	34	Valerie	2015-07-11	
1356	4446	5	11	37	2	27	2	2	18	3	45	Valerie	2015-07-11	
1357	4446	5	12	36	1	33	2	2	11	2	44	Valerie	2015-07-11	
1358	4446	5	13	34	1	29	3	2	8	2	37	Valerie	2015-07-11	
1359	4446	5	14	33	1	30	2	1	13	3	43	Valerie	2015-07-11	
1360	4446	5	15	40	2	28	3	1	17	2	45	Valerie	2015-07-11	
1361	4446	5	16	34	1	21	3	2	15	3	36	Valerie	2015-07-11	
1362	4446	5	17	35	1	34	3	2	7	2	41	Valerie	2015-07-11	
1363	4446	5	18	33	1	30	4	2	10	2	40	Valerie	2015-07-11	
1364	4446	5	19	35	2	26	3	1	9	2	35	Valerie	2015-07-11	
1365	4446	5	20	34	1	35	3	2	12	2	47	Valerie	2015-07-11	
1366	4446	16	1	43	2	38	4	2	98	4	136	Ghost/Whales	2015-07-16	
1367	4446	16	2	34	1	27	3	2	12	2	39	Ghost/Whales	2015-07-16	
1369	4446	16	4	40	2	28	4	2	27	3	55	Ghost/Whales	2015-07-16	
1370	4446	16	5	36	2	46	4	3			46	Ghost/Whales	2015-07-16	
1371	4446	16	6	44	2	27	4	2	157	4	184	Ghost/Whales	2015-07-16	
1372	4446	16	7	43	2	35	3	1	87	4	122	Ghost/Whales	2015-07-16	
1373	4446	16	8	38	2	33	2	2	26	3	59	Ghost/Whales	2015-07-16	
1374	4446	16	9	38	1	36	3	3			36	Ghost/Whales	2015-07-16	
1375	4446	16	10	36	1	26	2	0			26	Ghost/Whales	2015-07-16	
1376	4446	18	1	38	1	54	3	3			54	Ghost/Whales	2015-07-16	
1377	4446	18	2	35	1	42	3	3			42	Ghost/Whales	2015-07-16	
1378	4446	18	3	44	1	30	4	1	64	4	94	SO	Ghost/Whales	2015-07-16
1379	4446	18	4	34	1	30	3	0			30	Ghost/Whales	2015-07-16	
1380	4446	18	5	34	1	29	2	0			29	Ghost/Whales	2015-07-16	
1381	4446	18	6	34	2	28	3	0			28	Ghost/Whales	2015-07-16	
1382	4446	18	7	35	1	23	3	1	18	3	41	Ghost/Whales	2015-07-16	
1383	4446	18	8	38	1	26	4	1	58	4	84	Ghost/Whales	2015-07-16	
1384	4446	18	9	34	1	28	3	1	10	3	38	Ghost/Whales	2015-07-16	
1385	4446	18	10	31	1	29	3	0			29	Ghost/Whales	2015-07-16	
1386	4446	21	1	33	2	26	3	0			26	Ghost/Whales	2015-07-16	
1387	4446	21	2	38	2	35	3	2	31	4	66	SO	Ghost/Whales	2015-07-16
1389	4446	21	4	34	2	33	4	2	4	1	37	Ghost/Whales	2015-07-16	
1390	4446	21	5	31	1	32	3	0			32	Ghost/Whales	2015-07-16	
1391	4446	21	6	39	2	27	3	1	66	4	93	Ghost/Whales	2015-07-16	
1392	4446	21	7	36	2	32	3	1	14	2	46	Ghost/Whales	2015-07-16	
1393	4446	21	8	39	2	35	3	1	71	4	106	Ghost/Whales	2015-07-16	
1394	4446	21	9	37	2	28	3	0			28	Ghost/Whales	2015-07-16	
1395	4446	21	10	35	2	26	3	2	4	1	30	Ghost/Whales	2015-07-16	
1396	4446	23	1	34	1	31	2	0			31	Ghost/Whales	2015-07-16	
1397	4446	23	2	36	1	30	3	2	20	3	50	Ghost/Whales	2015-07-16	
1398	4446	23	3	37	1	34	3	0			34	Ghost/Whales	2015-07-16	
1399	4446	23	4	42	2	38	3	1	48	4	86	Ghost/Whales	2015-07-16	
1400	4446	23	5	39	1	28	3	1	29	3	57	Ghost/Whales	2015-07-16	
1401	4446	23	6	39	2	31	3	1	31	3	62	Ghost/Whales	2015-07-16	
1402	4446	23	7	36	1	29	4	1	25	3	54	Ghost/Whales	2015-07-16	
1403	4446	23	8	40	1	31	3	1	114	4	145	SO	Ghost/Whales	2015-07-16
1404	4446	23	9	36	1	32	3	2	4	1	36	Ghost/Whales	2015-07-16	
1405	4446	23	10	38	2		5					Ghost/Whales	2015-07-16	
1406	4446	23	11	39	2	24	3	1	29	4	53	Ghost/Whales	2015-07-16	
1407	4446	23	12	38	1	30	3	1	26	3	56	SO	Ghost/Whales	2015-07-16
1408	4446	23	13	39	1	30	4	2	28	3	58	Ghost/Whales	2015-07-16	
1409	4446	23	14	37	1	34	3	2	2	1	36	Ghost/Whales	2015-07-16	
1410	4446	23	15	41	1	36	3	1	46	3	82	SO	Ghost/Whales	2015-07-16
1411	4446	23	16	37	1	24	4	2	23	3	47	Ghost/Whales	2015-07-16	
1412	4446	23	17	39	2	37	3	2	39	3	76	Ghost/Whales	2015-07-16	
1413	4446	23	18	35	1	33	3	0			33	Ghost/Whales	2015-07-16	

1414	4446	23	19	40	2	28	4	2	55	3	83	Ghost/Whales	2015-07-16
1415	4446	23	20	35	1	26	4	2	24	4	50	Ghost/Whales	2015-07-16
1416	4448	11	1	37	2	32	3	2	4	2	36	1485	2015-07-09
1417	4448	11	2	40	2	28	2	2	14	3	42	1485	2015-07-09
1418	4448	11	3	49	2	37	4	1	185	4	222	1485	2015-07-09
1419	4448	11	4	36	2	24	3	2	13	3	37	1485	2015-07-09
1420	4448	11	5	47	2	36	3	1	148	4	184	1485	2015-07-09
1421	4448	11	7	38	2	33	3	2	4	1	37	1485	2015-07-09
1422	4448	11	8	37	2	35	3	2	8	2	43	1485	2015-07-09
1423	4448	11	9	43	2	33	3	2	16	3	49	1485	2015-07-09
1424	4448	11	10	32	2	29	2	0			29	1485	2015-07-09
1425	4448	11	11	39	2	33	3	2	4	2	37	1485	2015-07-09
1426	4448	11	12	38	2	27	3	2	8	2	35	1485	2015-07-09
1427	4448	11	13	35	1	25	3	1	8	2	33	1485	2015-07-09
1428	4448	11	14	43	2	35	3	1	26	3	61	1485	2015-07-09
1429	4448	11	15	38	2	28	2	2	4	1	32	1485	2015-07-09
1430	4448	11	16	38	1	33	3	1	9	2	42	1485	2015-07-09
1431	4448	11	17	45	2	50	3	3			50	1485	2015-07-09
1432	4448	11	18	38	2	27	3	2	10	2	37	1485	2015-07-09
1433	4448	11	19	41	2	30	3	2	19	3	49	1485	2015-07-09
1434	4448	11	20	40	2	37	2	3			37	1485	2015-07-09
1435	4448	11	21	38	1	31	3	2	23	3	54	1485	2015-07-09
1436	4448	11	22	41	2	33	3	2	11	2	44	1485	2015-07-09
1437	4448	11	23	46	2	35	4	2	96	4	131	1485	2015-07-09
1438	4448	11	24	35	2	33	3	0			33	1485	2015-07-09
1439	4448	11	25	48	2	31	4	2	81	4	112	1485	2015-07-09
1440	4448	11	26	36	2	27	3	2	14	3	41	1485	2015-07-09
1441	4448	11	27	35	2	23	3	0			23	1485	2015-07-09
1442	4448	16	1	38	2	32	3	2	4	2	36	1485	2015-07-10
1443	4448	17	1	39	1	32	3	2	11	2	43	1485	2015-07-10
1444	4448	17	2	35	1	31	3	2	13	2	44	1485	2015-07-10
1445	4448	17	3	45	2	30	3	1	49	3	79	1485	2015-07-10
1446	4448	17	4	38	2	33	3	2	14	3	47	1485	2015-07-10
1447	4448	17	5	36	1	25	3	2	16	3	41	1485	2015-07-10
1448	4448	17	6	46	2	28	4	1	122	4	150	1485	2015-07-10
1449	4448	17	7	47	2	32	4	1	72	3	104	1485	2015-07-10
1450	4448	17	8	37	1	24	3	2	9	2	33	1485	2015-07-10
1451	4448	17	9	39	2	33	3	2	11	3	44	1485	2015-07-10
1452	4448	17	10	45	2	32	3	2	108	3	140	1485	2015-07-10
1453	4448	17	11	42	2	36	2	2	3	1	39	1485	2015-07-10
1454	4448	17	12	35	1	30	3	2	17	3	47	1485	2015-07-10
1455	4448	17	13	36	1	31	3	1	6	1	37	1485	2015-07-10
1456	4448	17	14	47	2	32	4	1	97	4	129	1485	2015-07-10
1457	4448	17	15	38	1	44	3	3			44	1485	2015-07-10
1458	4448	17	16	46	2	36	2	1	30	3	66	1485	2015-07-10
1459	4448	17	17	44	2	31	3	1	11	2	42	1485	2015-07-10
1460	4448	17	18	40	2	31	3	2	16	3	47	1485	2015-07-10
1461	4448	17	19	39	2	36	3	3			36	1485	2015-07-10
1462	4448	17	20	40	2	34	3	2	7	2	41	1485	2015-07-10
1463	4448	17	21	38	1	30	3	2	10	2	40	1485	2015-07-10
1464	4448	17	22	46	2	33	4	2	162	4	195	1485	2015-07-10
1465	4448	17	23	40	2	28	3	2	14	2	42	1485	2015-07-10
1466	4448	17	24	39	2	31	3	2	12	2	43	1485	2015-07-10
1467	4448	17	25	42	1	32	4	1	122	4	154	1485	2015-07-10
1468	4448	17	26	40	1	28	3	1	15	2	43	1485	2015-07-10
1469	4448	17	27	35	1	32	2	2	4	1	36	1485	2015-07-10
1470	4448	17	28	44	2	39	3	1	107	4	146	1485	2015-07-10
1471	4448	17	29	43	2	39	4	2	119	4	158	1485	2015-07-10
1472	4448	17	30	41	2	27	3	2	59	4	86	1485	2015-07-10