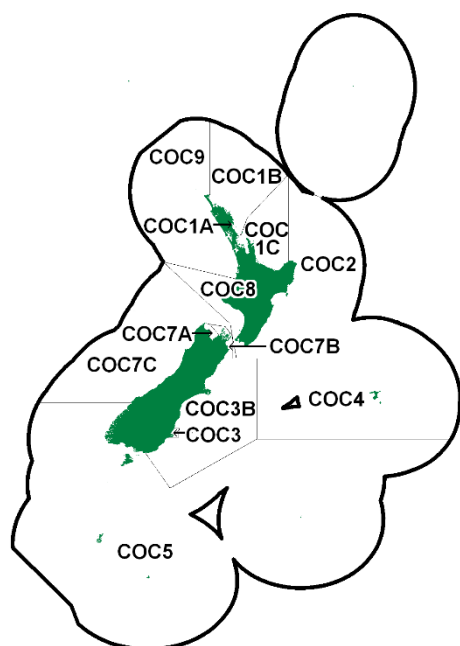


INTRODUCTION – COCKLES (COC)

(*Austrovenus stutchburyi*)

Tuangi



1. INTRODUCTION

Cockles are important shellfish both commercially and for non-commercial fishers. For assessment purposes, individual reports on the largest commercial fisheries have been produced separately:

1. Snake Bank, Whangarei Harbour, in COC 1A.
2. Papanui Inlet, Waitati Inlet, and Otago Harbour, Otago Peninsula in COC 3.
3. Tasman Bay and Golden Bay in COC 7A.

Since 1992, Fisheries New Zealand or its predecessors has commissioned biomass surveys for cockles and pipi in the northern North Island on beaches where there is known recreational and customary fishing pressure. The objective of the surveys is to determine the distribution, abundance, and size frequency of cockles and pipi on selected beaches in the Auckland Fisheries Management Areas (FMA 1 and FMA 2).

Over the years, a total of 37 beaches have been monitored. On average, 12 beaches are sampled each year. The last survey was conducted in 2024 (Berkenbusch & Hill-Moana in prep). All of the eleven sites assessed in 2024–25 contained cockles populations and in these eleven sites the population estimates had CV values below 20% except in one location. Most sites supported cockle populations at high densities, i.e., of several hundred individuals per square metre. The lowest density of 148 cockles per m² (CV: 11.18%) was at Waiotape Estuary. Both Pataua Estuary and Whitianga Harbour had comparatively high densities at 1031 cockles per m² and 1617 cockles per m² (CV: 9.71%), respectively. Regardless of population density, none of the populations included a notable number of large cockles (defined as ≥ 30 mm shell length), and their population estimates had generally high CV values. A number of cockle populations were characterised by strong recruitment, indicated by a relatively high proportion (i.e., over 20% of the total population) of recruits (≤ 15 mm shell length). These populations were at Kawakawa Bay (West), Ōhiwa Harbour, Ōkahu Bay, Okoromai Bay, Otūmoetai (Tauranga Harbour), Pataua and Waiotape estuaries, and Whitianga Harbour. At Ōkahu Bay and Whitianga Harbour, over 80% of the population consisted of recruits.

The tools employed to manage these fisheries include daily bag limits and seasonal, temporary, and permanent closures. Size limits are also an option, but these are not currently in use. Customary management tools such as 186A closures, taiāpure, and mātaítai may also be implemented at the request of tangata whenua.

The fishing pressure and the depletion of some shellfish beds have led to the introduction of a range of the above measures at finer spatial scales:

Mātaítai reserves	
Bay of Plenty	Aotea Harbour and adjacent waters
Waikato	Marokopa
Temporary closures to shellfish harvesting under s186A of the Act	
Northland	Tutukaka Harbour, Ngunguru Bay, Ngunguru River, Horahora River and surrounding areas (Rehuotane Ki Tai)
Auckland	Marsden bank and Mair Bank
Auckland	Umupuia Beach
Coromandel	Te Mātā and Waipatukahu
Closures gazetted under s11 sustainability measures	
Northland	Ngunguru estuary
Northland	Whangateau Harbour
Auckland	Cockle Bay
Fisheries (Amateur Fishing) Regulations 2013 Permanent shellfish closures	
	Cheltenham
	Eastern Beach
Taiāpure	
Waikato	Kawhia Aotea

1.1 Commercial fisheries

Reported landings for main cockle stocks are presented in Table 1. No landings have been reported from other cockle stocks.

Cockles were introduced into the QMS on 1 October 2002. The fishing year runs from 1 October until September 30 and catches are measured in greenweight for all stocks. There is no minimum legal size for cockles in any stock. Cockles are managed under Schedule 6 of the Fisheries Act for all stocks listed in Table 2, which allows cockles to be returned to where they were taken as soon as practicable after the cockle is taken, as long as the cockle is likely to survive.

The landings, by stock, of these cockle fisheries are dominated by catch from COC 3 (Figure 1). Landings from COC 3 have been relatively stable since 2002–03; by contrast landings from COC 1A and COC 7A have generally declined during that time. However, it should be noted that since 2009, COC 3 has had access to additional substantial stocks within Otago Harbour.

New Zealand operates a mandatory shellfish quality assurance programme for all bivalve shellfish commercial growing or harvesting areas for human consumption. Shellfish caught outside this programme can only be sold for bait. This programme is based on international best practice and managed by Food Safety New Zealand in cooperation with the District Health Board Public Health Units and the shellfish industry¹ and is summarised below. Before any area can be used to grow or harvest bivalve shellfish, public health officials survey the water catchment area to identify any potential pollution issues and take samples of the water and shellfish over at least a 12-month period, so all seasonal influences are explored. This information is evaluated and, if suitable, the area is classified and listed by Food Safety New Zealand for harvest. There is then a requirement for regular monitoring of the water and shellfish flesh to verify levels of microbiological and chemical contaminants. Management measures stemming from this testing include closure after rainfall, to deal with

¹For full details of this programme, refer to the Animal Products (Regulated Control Scheme-Bivalve Molluscan Shellfish) Regulations 2006 and the Animal Products (Specifications for Bivalve Molluscan Shellfish) Notice 2006 (both referred to as the BMSRCS), at: <https://www.mpi.govt.nz/food-business/food-monitoring-surveillance/seafood-monitoring-programmes/>

microbiological contamination from runoff. Natural marine biotoxins can also cause health risks, therefore testing for these also occur at regular intervals. If toxins are detected above the permissible level the harvest areas are closed until the levels fall below the permissible level. Products are also traceable so that the source and time of harvest can always be identified in case of contamination.

Table 1: Reported landings (t) of cockle by Fishstock from 1983–84 to present and gazetted and actual TACCs (t). QMS data from 2002–present.

Fishstock FMAs	COC 1A 1		COC 3 3		COC 7A 7		Total all	
	Landings	TACC	Landings	TACC	Landings	TACC	Landings	TACC
1983–84*	–	–			2	225	2	225
1984–85*	–	–			38	225	38	225
1985–86*	–	–			174	225	174	225
1986–87*	114	584	14	104	230	225	358	913
1987–88*	128	584	8	104	224	225	360	913
1988–89*	255	584	5	104	265	300	525	988
1989–90*	426	584	25	104	368	300	819	988
1990–91*	396	584	106	104	535	300	1 037	988
1991–92*	537	584	104	104	298	300	939	988
1992–93*	316	584	182	342	300	336	798	1 262
1993–94*	566	584	199	342	440	336	1 205	1 262
1994–95*	501	584	342	342	326	336	1 169	1 262
1995–96*	495	584	342	342	329	336	1 166	1 262
1996–97*	457	584	342	342	325	336	1 124	1 262
1997–98*	439	584	342	342	513	949	1 294	1 875
1998–99*	472	584	383	342	552	1 130	1 407	2 056
1999–00*	505	584	552	1 273	752	1 130	1 809	2 987
2000–01*	423	584	696	1 273	731	1 134	1 850	2 991
2001–02*	405	584	640	1 273	556	1 134	1 601	2 991
2002–03	237	346	767	1 470	569	1 390	1 574	3 206
2003–04	218	346	762	1 470	553	1 390	1 533	3 206
2004–05	151	346	800	1 470	428	1 390	1 379	3 206
2005–06	137	346	943	1 470	460	1 390	1 540	3 214
2006–07	111	346	907	1 470	337	1 390	1 355	3 214
2007–08	151	346	760	1 470	237	1 390	1 148	3 214
2008–09	88	346	774	1 470	307	1 390	1 169	3 214
2009–10	93	346	821	1 470	301	1 390	1 214	3 214
2010–11	64	346	836	1 470	348	1 390	1 247	3 214
2011–12	43	346	795	1 470	220	1 390	1 058	3 214
2012–13	0	346	790	1 470	269	1 390	1 059	3 214
2013–14	0	346	800	1 470	290	1 390	1 090	3 214
2014–15	0	346	815	1 470	263	1 390	1 078	3 214
2015–16	0	346	923	1 470	263	1 390	1 186	3 214
2016–17	0	346	967	1 470	238	1 390	1 205	3 214
2017–18	0	346	954	1 470	254	1 390	1 208	3 214
2018–19	0	346	1 008	1 470	187	1 390	1 195	3 214
2019–20	0	346	872	1 470	146	1 390	1 018	3 214
2020–21	0	346	890	1 470	293	1 390	1 183	3 214
2021–22	0	346	888	1 470	276	1 390	1 164	3 214
2022–23	0	346	858	1 470	138	1 390	995	3 214
2023–24	0	346	891	1 470	65	1 390	956	3 214

*Before cockle entered the QMS, the fisheries were restricted by daily catch limits (365-day total provided above), but there was no explicit annual restriction. TACCs were established in October 2002 when cockle entered the QMS.

Table 2: Recreational and Customary non-commercial allowances, other mortality, TACCs, and TACs (t) for cockles by Fishstock.

Fishstock	Description	Recreational allowance	Customary non- commercial allowance	Other sources of mortality	TACC	TAC
COC 1A	Whangārei Harbour	25	25	4	346	400
COC 1B	East Northland	22	22	2	0	46
COC 1C	Hauraki Gulf and Bay of Plenty	32	32	3	5	72
COC 2	Central	2	2	1	0	5
COC 3	Otago	10	10	10	1 470	1 500
COC 3B	Part South East Coast	27	27	3	1	58
COC 4	South East (Chatham Rise)	1	1	1	0	3
COC 5	Southland and Sub-Antarctic	2	2	1	2	7
COC 7A	Nelson Bays	85	25	10	1 390	1 510
COC 7B	Marlborough	5	5	0	0	10
COC 7C	Part Challenger	3	3	1	0	7
COC 8	Central (Egmont)	1	1	1	0	3
COC 9	Auckland (West)	6	6	1	0	13

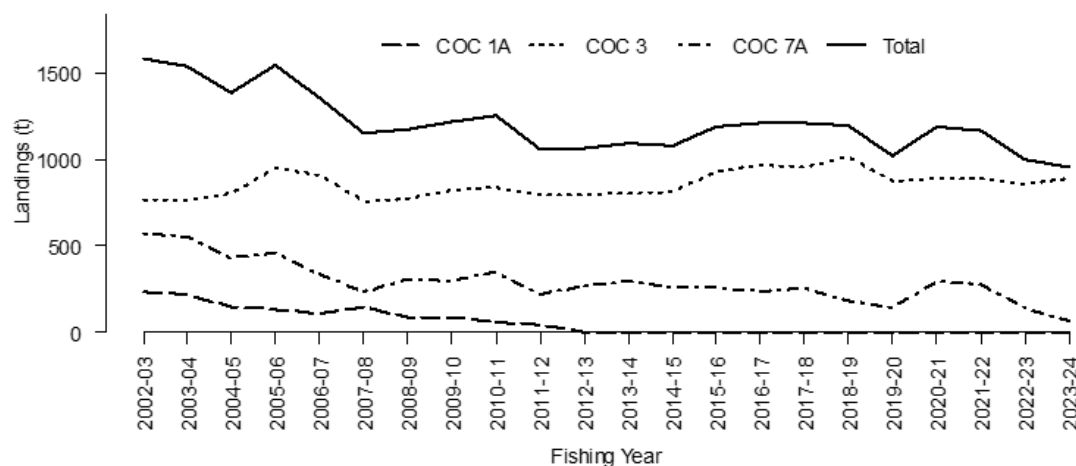


Figure 1: Commercial landings and the sum total (black line) of the three main commercial COC stocks from 2002–03 to present. Note that this figure does not show data prior to entry into the QMS.

1.2 Recreational fisheries

Cockles are taken by recreational fishers in many areas of New Zealand. The recreational fishery is harvested entirely by hand digging. Relatively large cockles are preferred.

Estimates of recreational harvest of cockles at the FMA level are available (Table 3). Early estimates of the amateur cockle harvest are available from telephone-diary survey in 1992–93 (Teirney et al 1997), 1996 (Bradford 1998), and 2000 (Boyd & Reilly 2004). Harvest weights were estimated assuming a mean weight of 25 g per cockle (for cockles over 30 mm).

Table 3: Estimated numbers of cockles harvested by recreational fishers in each FMA for the 2011-12 fishing year (Wynne-Jones et al 2014) and in each QMA for the 2017-18 (Wynne-Jones et al 2019) and 2022–23 (Heinemann & Gray 2024) fishing years, and the corresponding harvest weight based on an assumed mean weight of 25 g.

Stock	Harvest (number of cockles)	CV	Harvest (kg)
2011–12 (national panel survey)			
FMA 1	299 765		
FMA 2	8 789		
FMA 3	300 158		
FMA 5	369		
FMA 7	78 751		
FMA 8	19 490		
FMA 9	27 418		
2017–18 (national panel survey)			
COC 1A	-	-	-
COC 1B	17 221	0.69	430.53
COC 1C	164 297	0.52	4 107.42
COC 2	1 492	0.80	37.30
COC 3, 3B	94 885	0.40	2 372.12
COC 3	8 475	0.67	211.86
COC 5	6 761	1.00	169.03
COC 7A	23 176	0.41	579.41
COC 7B	1 601	0.59	40.03
COC 7C	-	-	-
COC 8	-	-	-
COC 9	22 337	0.77	558.44
2022–23 (national panel survey)			
COC 1A	-	-	-
COC 1B	44 451	0.82	1 111.28
COC 1C	6 923	0.87	173.08
COC 2	557	1.00	13.93
COC 3, 3B	29 561	0.73	739.03
COC 5	-	-	-
COC 7A	-	-	-
COC 7B	1 997	1.01	49.93
COC 7C	-	-	-
COC 9	1 927	1.03	48.18

The harvest estimates provided by telephone-diary surveys between 1993 and 2001 are no longer considered reliable. In response to these problems and the cost and scale challenges associated with onsite methods, a national panel survey was conducted for the first time throughout the 2011–12 fishing year (Wynne-Jones et al 2014). The panel survey used face-to-face interviews of a random sample of 30 390 New Zealand households to recruit a panel of fishers and non-fishers for a full year. The panel members were contacted regularly about their fishing activities and harvest information collected in standardised phone interviews. A repeat of the national panel survey was conducted over the 2017–18 and 2022–23 October fishing years (Wynne-Jones et al 2019; Heinemann & Gray 2024).

1.3 Customary non-commercial fisheries

Like many other intertidal shellfish, cockles are very important to Māori as a traditional food. Cockles form an important fishery for customary non-commercial, but the total annual catch is not known.

Māori customary fishers utilise the provisions under both the recreational fishing regulations and the various customary regulations. Many tangata whenua harvest cockles under their recreational allowance and these are not included in records of customary catch. Customary reporting requirements vary around the country. Customary fishing authorisations issued in the South Island and Stewart Island would be under the Fisheries (South Island Customary Fishing) Regulations 1999. Many rohe moana/areas of the coastline in the North Island and Chatham Islands are gazetted under the Fisheries (Kaimoana Customary Fishing) Regulations 1998 which require reporting on authorisations. In the areas not gazetted, customary fishing permits would be issued would be under the Fisheries (Amateur Fishing) Regulations 2013, where there is no requirement to report catch.

The information on Māori customary harvest under the provisions made for customary fishing can be limited (Table 4). These numbers are likely to be an underestimate of customary harvest as only the catch approved and harvested in kilograms and numbers are reported in the table.

Details are provided in the respective Working Group report chapters.

Table 4 [Continued on next page]: Fisheries New Zealand records of customary harvest of cockles (approved and reported as weight (kg) and in numbers), since 2000–01. – no data.

Stock	Fishing year	Weight (kg)		Numbers	
		Approved	Harvested	Approved	Harvested
COC 1B	2008–09	120	120	450	450
	2009–10	440	440	–	–
	2010–11	340	340	–	–
	2011–12	400	400	–	–
	2012–13	280	280	–	–
COC 1C	2005–06	65	45	2 000	0
	2006–07	3 680	3 680	–	–
	2007–08	465	260	–	–
	2008–09	260	120	–	–
	2009–10	20	20	–	–
	2014–15	25	25	–	–
	2017–18	40	40	–	–
COC 2	2009–10	–	–	1 200	980
COC 3	2000–01	–	–	400	400
	2001–02	–	–	37	37
	2002–03	–	–	1 200	1 200
	2006–07	100	100	9 100	7 680
	2007–08	–	–	500	500
	2008–09	–	–	24 496	23 865
	2009–10	–	–	4 750	4 750
	2010–11	–	–	19 500	19 500
	2011–12	30	28	10 600	10 600
	2013–14	–	–	2 300	2 100
	2015–16	80	80	9 610	9 510
	2016–17	–	–	5 500	5 240
	2017–18	–	–	4 950	4 800
	2019–20	–	–	3 140	3 140
	2020–21	–	–	7 400	7 400
	2021–22	–	–	10 710	10 380

Table 4 [Continued]:

Stock	Fishing Year	Weight (kg)		Numbers	
		Approved	Harvested	Approved	Harvested
COC 3B	2006–07	–	–	156	156
	2007–08	–	–	5 000	5 000
	2008–09	–	–	1 250	750
	2011–12	–	–	500	340
	2015–16	–	–	500	100
	2017–18	–	–	2 250	1 433
	2018–19	–	–	1 500	1 356
	2019–20	–	–	2 450	1 640
	2020–21	–	–	1 220	970
	2021–22	–	–	200	100
COC 7C	2006–07	120	120	–	–
COC 9	2009–10	20	20	–	–
	2012–13	145	145	–	–
	2013–14	270	270	–	–
	2014–15	250	250	–	–

1.4 Illegal catch

No quantitative information on the level of illegal catch is available.

1.5 Other sources of mortality

No quantitative information is available on the magnitude of other sources of mortality. Harvesting implements, such as brooms, rakes, ‘hand-sorters’, bedsprings and ‘quickfeeds’ may cause some incidental mortality, particularly of small cockles, but this proposition has not been scientifically investigated. High-grading is often practised with smaller sized clams being returned to the beds, potentially causing stress and related mortality, however no research has substantiated this.

2. BIOLOGY

The cockle, *Austrovenus stutchburyi*, formerly known as *Chione stutchburyi*, is a shallow-burrowing suspension feeder of the family Veneridae. It is found in soft mud to fine sand on protected beaches and enclosed shores around the North Island and South Island, Stewart Island, the Chatham Islands, and the Auckland Islands (Morton & Miller 1973, Spencer et al 2002). Suspension feeders such as *A. stutchburyi* tend to be more abundant in sediments with a larger grain size. Cockles have been shown to be most abundant in sediments of below 12 percent mud in two separate studies (Thrush et al 2003, Anderson 2008). They are also common in eelgrass (e.g., *Zostera* sp.), which often co-occurs with sand flats.

Cockles are found from the lowest high-water neap tide mark to the lowest part of the shore. Larcombe (1971) suggested that the upper limit is found where submergence is only 3.5 hours per day. *Austrovenus stutchburyi* is often a dominant species and densities as high as 4500 per m² have been reported in some areas. In Pāuatahanui Inlet the cockle biomass was estimated at 80% (5000 t) of the total intertidal biomass in 1976 (Richardson et al 1979). Calculations based on laboratory measurements of filtration rates suggested that cockles over 35 mm shell length were capable of filtering 1.1×10^6 m³ of water or enough to filter all the water in Papanui Inlet every two tidal cycles (Pawson 2004).

Sexes are separate and the sex ratio is usually close to 1:1. Size at maturity has been estimated at about 18 mm shell length (Larcombe 1971). Spawning extends over spring and summer, and fertilisation is followed by a planktonic larval stage lasting about three weeks. Significant depression of larval settlement has been recorded for areas of otherwise suitable substrate from which all live cockles have been removed. This suggests the presence of some conditioning factor.

Work on Snake Bank also showed moderate differences among years in the level of recruitment of juveniles to the population. The variability of recruitment was estimated as $\sigma_R = 0.41$ using all available data (1983–1996), but as $\sigma_R = 0.31$ using data only from those years since the fishery has been considered to be fully developed (1991–96). Given the variability of most shellfish populations and the

shortness of the time series, this is probably an underestimate of the real variability of recruitment in the Snake Bank population.

Small cockles grow faster than large cockles, but, overall, maximum growth occurs on the first of January, and a period of no growth occurs at the beginning of July (Tuck & Williams 2012). Growth is slower in the higher tidal ranges and in high density beds. Significant increases in growth rates have been observed for individuals remaining in areas that have been ‘thinned out’ by simulated harvesting. Tagging work at Pākawau beach also highlighted the variability in growth that can occur within a beach (Osborne 2010).

Growth parameters and length weight relationships are listed in Table 4 (Stewart 2008, Williams et al 2009, Osborne 2010). However, considerable variability in growth has been seen in all three QMA's over time. At Snake Bank (1A) growth to 30 mm has been estimated as taking between 2 and 5 years in separate studies (Martin 1984, Cryer 1997). Additional tagging work on Snake Bank from 2001 to 2010 showed that on average, cockles reach maturity (18 mm; Larcombe 1971) in their second year of growth and recruit to harvestable size (about 28 mm SL) in about 3 to 4 years, although these results showed great variability in growth rate (tabulated in table 8 of Tuck & Williams 2012). At Pākawau beach (7A) K has varied between 0.36 and 0.41 and L_{∞} between 47 and 49mm (Osborne 1992, 1999). The work of Breen et al (1999) in Papanui and Waitati inlets, Pūrākaunui, and Otago Harbour showed no significant growth after one year and modes in the length frequency distributions did not shift when measured over four sampling periods within a year. They concluded that it was unlikely that average growth is really as slow as the results indicated, but there may be high inter-annual variability in growth.

Quite extensive movements of juveniles have been documented, but individuals over 25 mm shell length remain largely sessile, moving only in response to disturbance.

Given that cockles recruit to the spawning biomass at about 18 mm shell length, but do not recruit to commercial or non-commercial fisheries until closer to 30 mm shell length, there is some protection for the stock against overfishing, especially as the Snake Bank and Papanui and Waitati inlet stocks are probably not isolated as far as recruitment of juveniles is concerned. However, this generality should be treated with some caution, given that some population of adults seems to be required to stimulate settlement of spat.

Natural mortality arises from a number of sources. Birds are a major predator of cockles (up to about 23 mm shell length). Other predators include crabs and whelks. Cockles are also killed after being smothered by sediments shifted during storms or strong tides. A mass mortality event that killed an estimated 56–63% of all cockles and 80–84% of cockles over 30 mm in shell length (Fisheries New Zealand unpublished data) has been reported from sites within the Whangateau Harbour (north of Auckland). This mortality was attributed to a potential weakening of cockles due to heat stress then mortality from a coccidian parasite and a mycobacterium. Sediments, both suspended and deposited, both impact upon cockle fitness or survival, with terrestrial sediments having greater effects than marine sediments (Gibbs & Hewitt 2004). Increasing suspended sediment concentrations have induced increased physiological stress, decreased reproductive status, and decreased juvenile growth rates (Nicholls et al 2003, Gibbs & Hewitt 2004). Sediment deposition has also been shown to negatively impact upon densities of cockles (Lohrer et al 2004). The sum of these effects is seen in the distribution of cockles, which decline in abundance across a number of sites with increasing mud content in the sediments, either above zero or 11% mud content, depending upon the study (Thrush et al 2003, Anderson 2008).

Experimental work on Snake Bank led to estimates of absolute mortality of 17–30% per annum, instantaneous natural mortality (M) of 0.19–0.35, with a midpoint of $M = 0.28$. The estimated mortality rates for cockles of over 30 mm shell length were slightly greater at 19–37% per annum (M of 0.21–0.46 with a midpoint of 0.33). This higher estimate was caused by relatively high mortality rates for cockles of over 35 mm shell length and, as these are now uncommon in the population, $M = 0.30$ (range 0.20–0.40) has been assumed for yield calculations across all three stocks (Table 5). Tagging (both notch and individual numbered tags) was ongoing on Mair Bank from 2001 to 2009 and the last

recoveries occurred in 2010 (Tuck & Williams 2012). Annualised mortality estimates (M) (averaged over 3, 6, and 9 month recoveries) were 0.356 and 0.465 from studies in 2008 and 2009.

Table 5: Biological parameters used for cockle assessments for different stocks. SL = shell length, within area COC 7A, P = Pākawau, FP = Ferry Point, TBR = Tapu Bay/Riwaka.

	COC 1A	COC 3	COC 7A
1. Natural mortality (M)	0.3	0.3	0.3
2. Weight (grams)	$= a(\text{shell length})^b$		
a	0.00014	0.7211	$P = 0.000018, FP = 0.0002, TBR = 0.00015$
b	3.29	11.55	$P = 3.78, FP = 3.153, TBR = 3.249$
3. von Bertalanffy growth parameters	Not used instead growth $= a(\ln(\text{age in years})) + b$		
K	0.26	0.326	$a = 11.452$
L_{∞} (mm)	35	40.95	$b = 16.425$
SL at recruitment to the fishery (mm)	28	28	30

3. STOCKS AND AREAS

Little is known of the stock boundaries of cockles. Given the planktonic larval phase, many populations may receive spat fall from other nearby populations and may, in turn, provide spat for these other areas. In the absence of more detailed knowledge, each commercial fishery area is managed as a discrete population.

4. FOR FURTHER INFORMATION

- Anderson, M J (2008) Animal-sediment relationships re-visited: Characterising species' distributions along an environmental gradient using canonical analysis and quantile regression splines. *Journal of Experimental Marine Biology and Ecology* 366(1–2): 16–27.
- Berkenbusch, K; Hill-Moana, T (In prep) Intertidal shellfish monitoring in the northern North Island region, 2024–25. *New Zealand Fisheries Assessment Report 20XX/xx*. 111 p.
- Boyd, R O; Reilly, J L (2004) 1999–2000 National Marine Recreational Fishing Survey: harvest estimates. (Unpublished draft New Zealand Fisheries Assessment Report for the Ministry of Fisheries Project REC9803 held by Fisheries New Zealand.) 28 p.
- Bradford, E (1998) Harvest estimates from the 1996 national marine recreational fishing surveys. New Zealand Fisheries Assessment Research Document 98/16. 27 p. (Unpublished report held by NIWA library, Wellington).
- Breen, P A; Carbines, G C; Kendrick, T H (1999) Stock assessment of cockles in Papanui and Waitati Inlets, Otago Harbour, and Purakanui, Otago. (Unpublished Final Report for the Ministry of Fisheries research project COC9701 dated July 1999, held by Fisheries New Zealand, Wellington.)
- Cryer, M (1997) Assessment of cockles on Snake Bank, Whangarei Harbour, for 1996. New Zealand Fisheries Assessment Research Document 97/2. 29 p. (Unpublished report held by NIWA library, Wellington.)
- Ellis, J I (2003) Habitat change in estuaries: predicting broad-scale responses of intertidal macrofauna to sediment mud content. *Marine Ecology-Progress Series* 263: 101–112.
- Gibbs, M; Hewitt, J E (2004) Effects of sedimentation on macrofaunal communities: a synthesis of research studies for ARC. *Auckland Regional Council Technical Publication* 264.
- Heinemann A; Gray, A. (2024) National Panel Survey of Recreational Marine Fishers 2022–23. *New Zealand Fisheries Assessment Report 2024/51*. 116 p.
- Irwin, C (2004) The impacts of harvesting and the sustainability of a New Zealand Littleneck Clam (*Austrovenus stutchburyi*) Fishery in Papanui and Waitati Inlets, New Zealand. (PhD thesis Marine Science. University of Otago, Dunedin.)
- Larcombe, M (1971) The ecology, population dynamics, and energetics of some soft shore molluscs. (PhD thesis, Department of Zoology, University of Auckland.) 250 p.
- Lohrer, A; Thrush, S; Hewitt, J E; Berkenbusch, K; Ahrens, M; Cummings, V J (2004) Terrestrially derived sediment: response of marine macrobenthic communities to thin terrigenous deposits. *Marine Ecology Progress Series* 273: 121–138.
- McKinnon, J (1996) Studies of the age, growth and shell increment patterns in the New Zealand cockle (*Austrovenus stutchburyi*). (Unpublished MSc thesis, University of Otago, Dunedin, New Zealand.)
- Manly, B F J; Akroyd, J M; Walshe, K A R (2002) Two-phase stratified random surveys on multiple populations at multiple locations. *New Zealand Journal of Marine and Freshwater Research* 36: 581–591.
- Martin, N D (1984) *Chione stutchburyi* population responses to exploitation. (Unpublished MSc Thesis, University of Auckland, Auckland.)
- Morton, J; Miller, M (1973) *The New Zealand Sea Shore*. Collins, Auckland. 653 p.
- Nicholls, P; Hewitt, J; Halliday, J (2003) Effects of suspended sediment concentrations on suspension and deposit feeding marine macrofauna. *Auckland Regional Council Technical Publication* 211. 40 p.
- Osborne, T A (1992) Biomass survey and stock assessment of the New Zealand littleneck clam (*Chione stutchburyi*) on Pakawau Beach, Golden Bay. (Unpublished report prepared for Westhaven Shellfish Co. Ltd.) 27 p.
- Osborne, T A (1999) 1999 biomass survey and stock assessment of the New Zealand littleneck clam (*Chione stutchburyi*) on Pakawau Beach, Golden Bay. (Unpublished report prepared by Osborne Research Co. Ltd. for Westhaven Shellfish Co. Ltd.) 15 p.
- Osborne, T A (2010) Biomass survey and stock assessment of cockles (*Austrovenus stutchburyi*) in area COC 7A: Tapu Bay, Ferry Point, and Pakawau. *New Zealand Fisheries Assessment Report 2010/44*.
- Pawson, M (2004) The cockle *Austrovenus stutchburyi* and chlorophyll depletion in a southern New Zealand Inlet. MSc thesis, Marine Science. University of Otago, Dunedin.) 113 p.

COCKLES (COC) – May 2025

- Richardson, J R; Alridge, A E; Main, W, deL (1979) Distribution of the New Zealand cockle, *Chione stutchburyi* at Pauatahanui Inlet. NZOI Oceanographic Field Report 14. 10 p.
- Spencer, H G; Willan, R C; Marshall, B A; Murray, T J (2002) Checklist of the Recent Mollusca described from the New Zealand Exclusive Economic Zone. <http://www.molluscs.otago.ac.nz/>
- Stewart, B (2008) Stock Assessment of Clams (*Austrovenus stutchburyi*) in Waitati Inlet, Otago, 2007. (Report Prepared by Ryder Consulting Ltd. for Southern Clams Ltd.)
- Teirney, L D; Kilner, A R; Millar, R E; Bradford, E; Bell, J D (1997) Estimation of recreational catch from 1991–92 to 1993–94 New Zealand Fisheries Assessment Research Document 97/15. 43 p. (Unpublished report held by NIWA library, Wellington.)
- Thrush, S F; Hewitt, J.E; Norkko, A; Nicholls, P E; Funnell, G A; Ellis, J I (2003) Habitat change in estuaries: predicting broad-scale responses of intertidal macrofauna to sediment mud content. *Marine Ecology-Progress Series* 263: 101–112.
- Tuck, I; Williams, J (2012) Cockle growth at Snake Bank, Whangarei Harbour, 2001–10. (Unpublished Fisheries Research Report for Ministry for Primary Industries.) 40 p.
- Williams, J R; Smith, M D; Mackay, G (2009) Biomass survey and stock assessment of cockles (*Austrovenus stutchburyi*) on Snake Bank, Whangarei Harbour, 2009. *New Zealand Fisheries Assessment Report 2009/29*. 22 p.
- Wynne-Jones, J; Gray, A; Heinemann, A; Hill, L; Walton, L (2019) National Panel Survey of Marine Recreational Fishers 2017–2018. *New Zealand Fisheries Assessment Report 2019/24*. 104 p.
- Wynne-Jones, J; Gray, A; Hill, L; Heinemann, A (2014) National Panel Survey of Marine Recreational Fishers 2011–12: Harvest Estimates. *New Zealand Fisheries Assessment Report 2014/67*. 139 p.