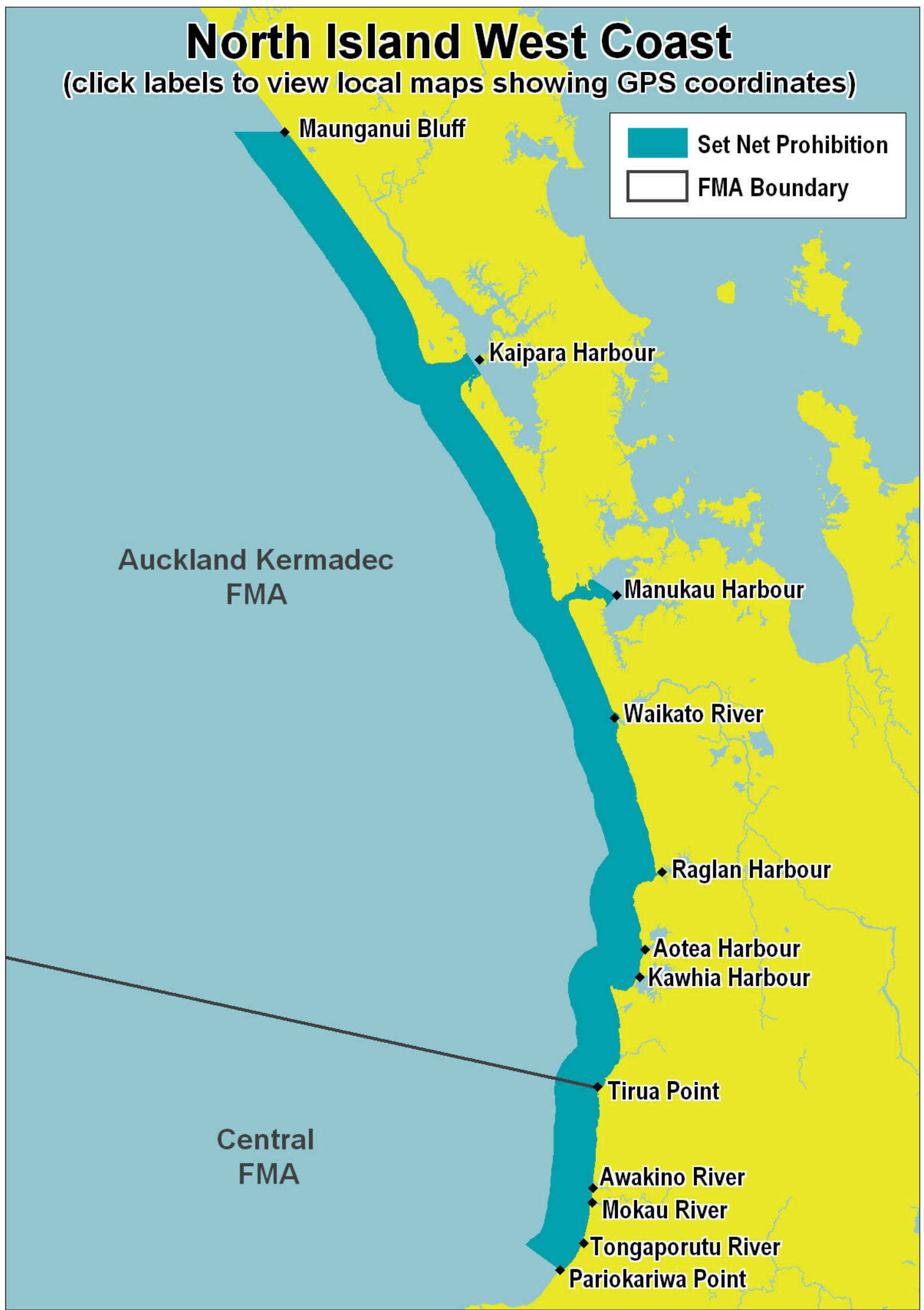


North Island West Coast

(click labels to view local maps showing GPS coordinates)



Maunganui Bluff

Kaipara Harbour

Manukau Harbour

Waikato River

Raglan Harbour

Aotea Harbour

Kawhia Harbour

Tirua Point

Awakino River

Mokau River

Tongaporutu River

Pariokariwa Point

Auckland Kermadec
FMA

Central
FMA

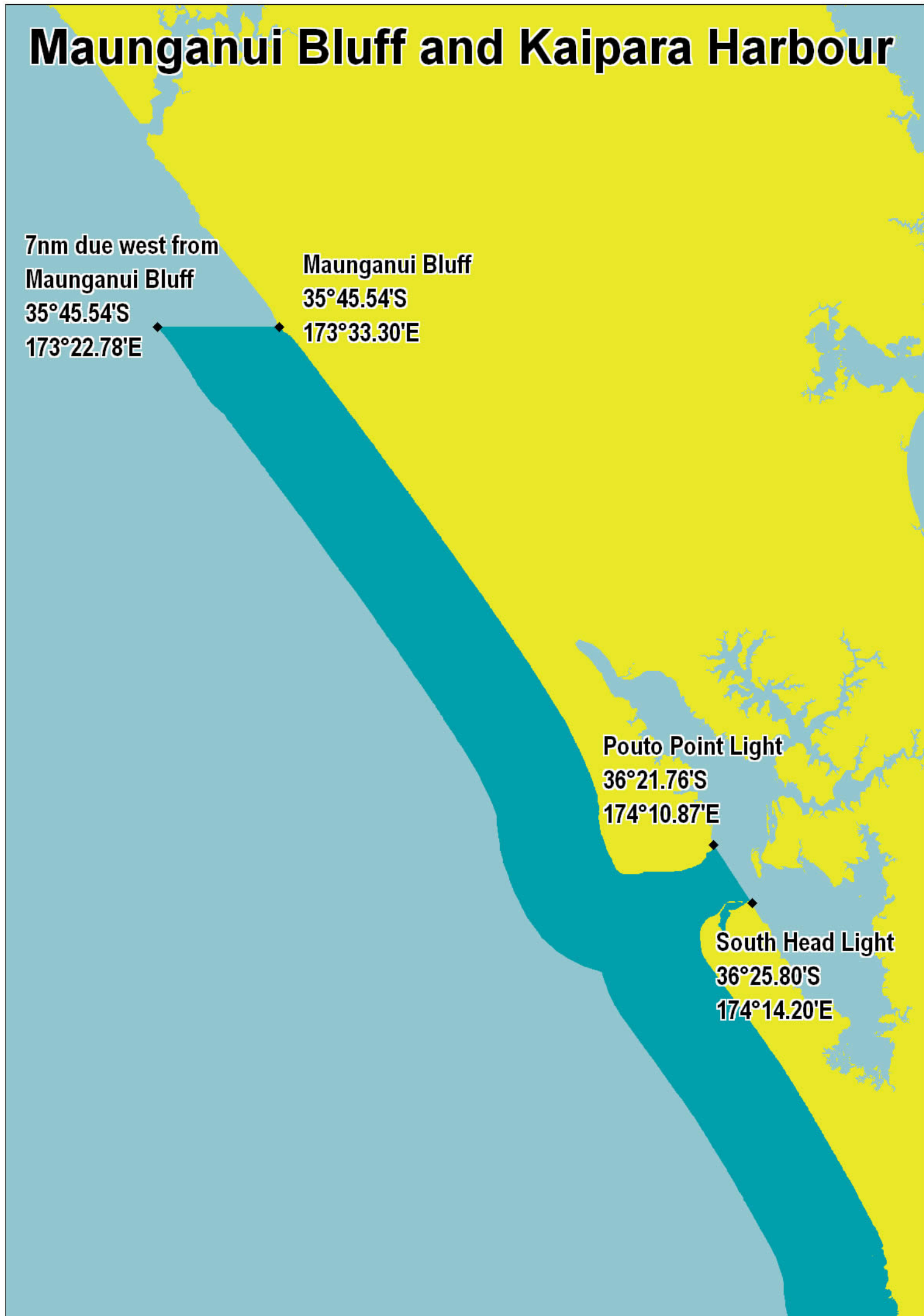
Maunganui Bluff and Kaipara Harbour

7nm due west from
Maunganui Bluff
35°45.54'S
173°22.78'E

Maunganui Bluff
35°45.54'S
173°33.30'E

Pouto Point Light
36°21.76'S
174°10.87'E

South Head Light
36°25.80'S
174°14.20'E



Manukau Harbour and the Waikato River

Lawry Point

36°59.31'S

174°37.05'E

Channel marker No.4

37°02.00'S

174°42.10'E

Southern Manukau Harbour

37°04.04'S

174°39.92'E

Northern side of
the Waikato River

37°22.59'S

174°43.94'E

Jetty

37°23.16'S

174°43.94'E



Raglan Harbour

Northern side of
Raglan Harbour
37°47.74'S
174°51.54'E

Putoetoe Point
37°48.01'S
174°51.87'E



Aotea and Kawhia Harbours

Aotea Harbour

Potahi Point

38°00.56'S

174°47.97'E

Kahua Point

38°02.19'S

174°47.09'E

Tauratahi Point

38°05.05'S

174°46.86'E

Urawitiki Point

38°05.26'S

174°46.25'E

Kawhia Harbour

